

HI-ILS or LOC/DME RWY 12

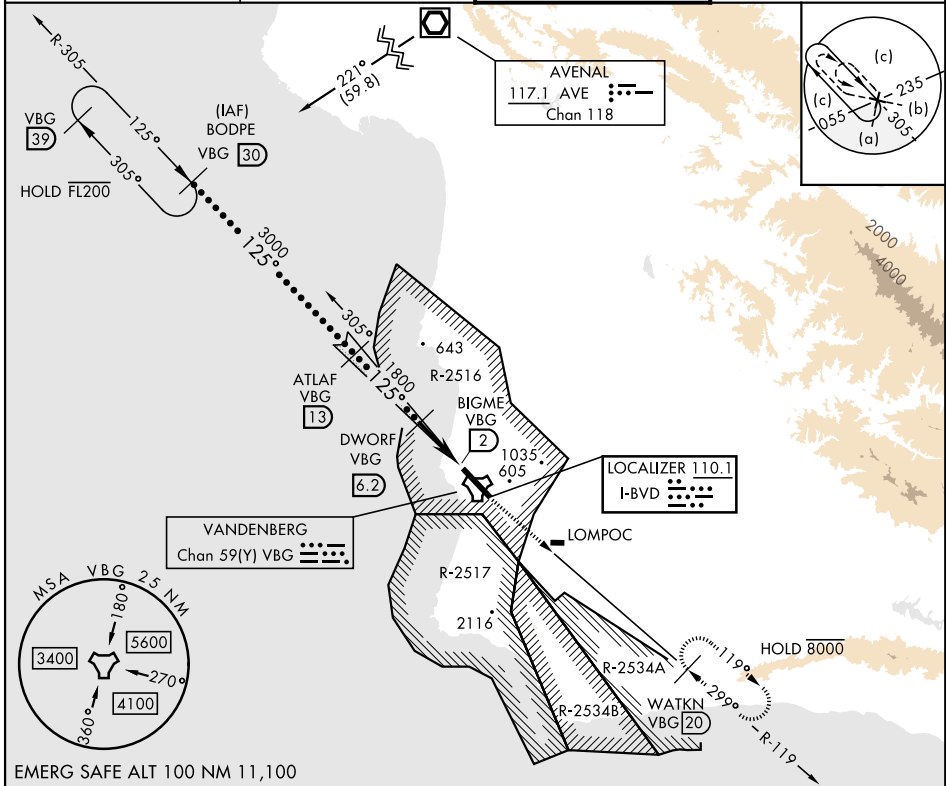
LOC I-BVD 110.1	APCH CRS 125°	Rwy Idg 15,000 TDZE 265 Arprt Elev 368
---------------------------	-------------------------	---

[USSF]

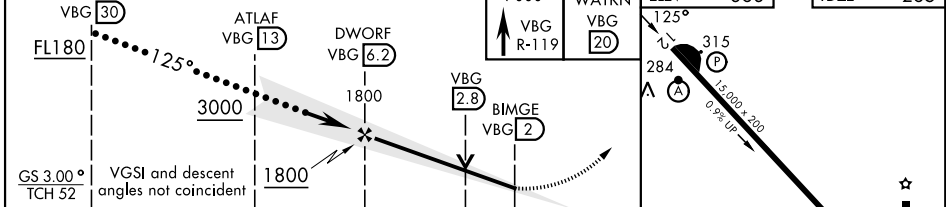
VANDENBERG SFB (KVBG)

DME required ▼ * When ALS inop, increase RVR to 40 and vis to ¾ mile. ** When ALS inop, increase CAT CDE vis to 1¼ mile.	ALSF-2 A	MISSED APPROACH: Climb out VBG TACAN R-119 until 20 DME (WATKN) and hold. Continue climb in hold maintain 7000.
--	-------------	---

ATIS 133.125 257.975	SANTA BARBARA APP/DEP CON ★ 124.15 327.8	TOWER ★ 124.95 0 (CTAF) 326.2	GND CON 121.75 275.8
--------------------------------	--	---	--------------------------------



EMERG SAFE ALT 100 NM 11,100



CATEGORY	C	D	E
S-ILS 12 *	465/24	200 (100-½)	
S-LOC 12**	700/40	435 (400-¾)	
CIRCLING	1020-1¾ 652 (700-1¾)	1180-2¾ 812 (900-2¾)	1560-3 1192 (1200-3)

HI-ILS or LOC/DME RWY 12

SW-3, 19 MAR 2026 to 16 APR 2026

SW-3, 19 MAR 2026 to 16 APR 2026