

TACAN RWY 12

TACAN VBG Chan 59(Y)	APCH CRS 129°	Rwy Ldg TDZE Arprt Elev 15,000 265 368
--------------------------------	-------------------------	--

[USSF]

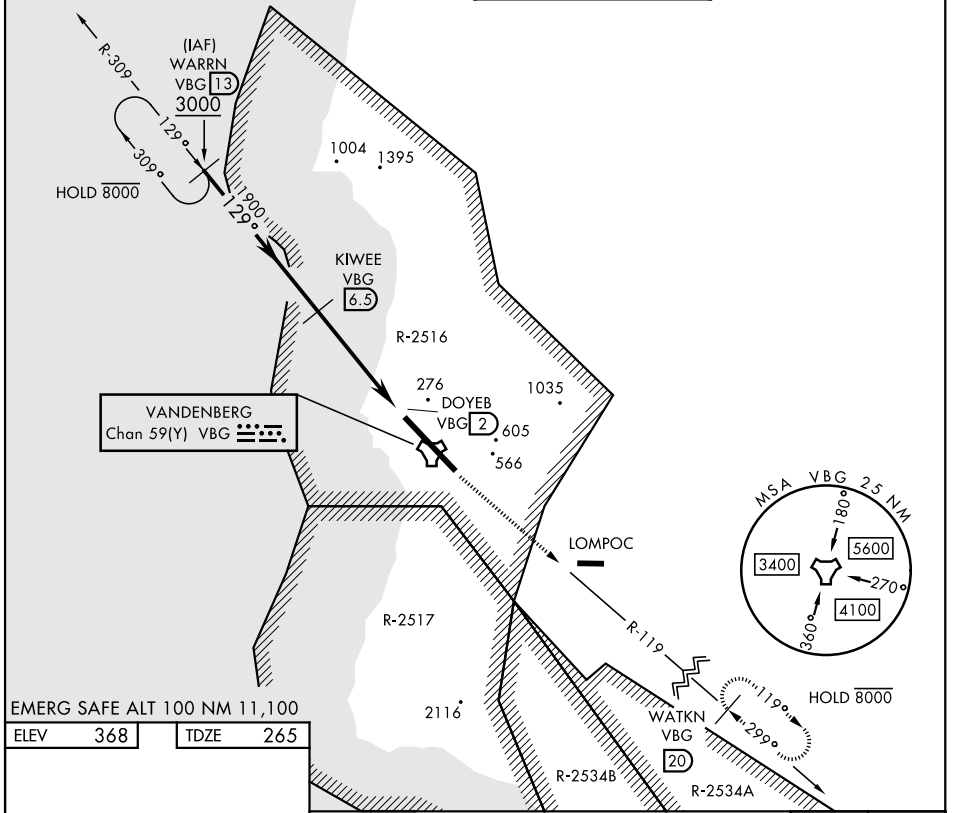
VANDENBERG SFB (KVBG)

⚠ * When ALS inop, increase CAT AB RVR to 55 and vis to 1 mile; CAT CDE vis to 1 3/8 miles.

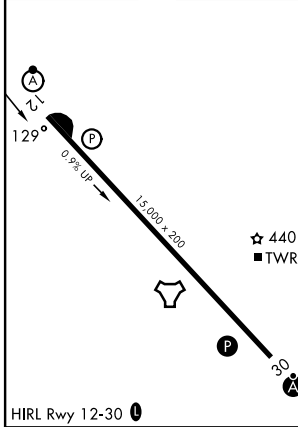
ALS-F-2

MISSED APPROACH: Climb out VBG TACAN R-119 until 20 DME (WATKN) and hold. Continue climb in hold maintain 7000.

ATIS 133.125 257.975	SANTA BARBARA APP CON★ 124.15 327.8	TOWER★ 124.95 0 (CTAF) 326.2	GND CON 121.75 275.8
--------------------------------	--	---	--------------------------------



EMERG SAFE ALT 100 NM 11,100
ELEV 368 TDZE 265



	WARRN VBG 13 3000	KIWEE VBG 6.5 1900	DOYEB VBG 2 7000	VBG TACAN	WATKN VBG 20
	129°		3.03° TCH 52	4.5 NM	
			0.5		
CATEGORY	A	B	C	D	E
S-12*	740/24	475 (400-1/2)	740/50	475 (400-1)	
CIRCLING	980-1	1000-1	1020-1 3/4	1180-2 3/4	1560-3
	612 (700-1)	632 (700-1)	652 (700-1 3/4)	812 (900-2 3/4)	1192 (1200-3)

TACAN RWY 12

SW-3, 19 MAR 2026 to 16 APR 2026

SW-3, 19 MAR 2026 to 16 APR 2026