

TACAN RWY 30

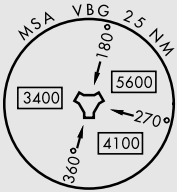
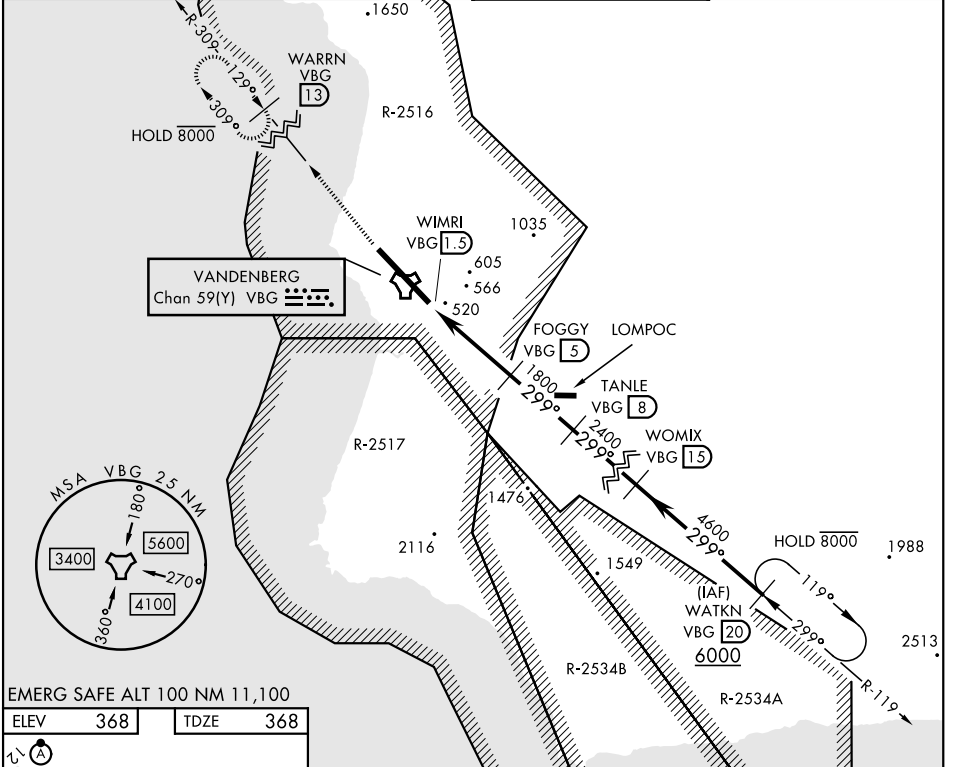
VANDENBERG SFB (KVBG)

TACAN VBG Chan 59(Y)	APCH CRS 299°	Rwy Idg 15,000 TDZE 368 Arpt Elev 368
--------------------------------	-------------------------	--

[USSF]

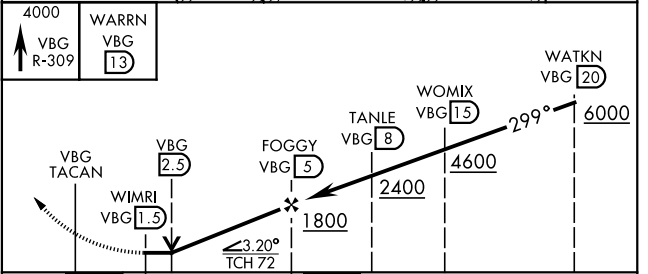
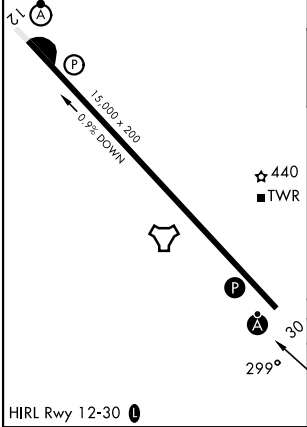
<p>▼ * When ALS inop, increase CAT AB RVR to 55 and vis to 1 mile, CAT CDE vis to 1½ miles.</p>	<p>ALSF-2</p>	<p>MISSED APPROACH: Climb out VBG TACAN R-309 to WARRN and hold. Continue climb in hold maintain 4000.</p>
---	---------------	--

<p>ATIS 133.125 257.975</p>	<p>SANTA BARBARA APP CON★ 124.15 327.8</p>	<p>TOWER★ 124.95 (CTAF) 326.2</p>	<p>GND CON 121.75 275.8</p>
--	---	---	--



EMERG SAFE ALT 100 NM 11,100

ELEV	368	TDZE	368
------	-----	------	-----



CATEGORY	A	B	C	D	E
S-30 *	920/24	552 (600-½)	920/60	552 (600-1½)	
CIRCLING	980-1 612 (700-1)	1000-1 632 (700-1)	1020-1¾ 652(700-1¾)	1180-2¾ 812(900-2¾)	1560-3 1192(1200-3)

TACAN RWY 30

SW-3, 19 MAR 2026 to 16 APR 2026

SW-3, 19 MAR 2026 to 16 APR 2026