

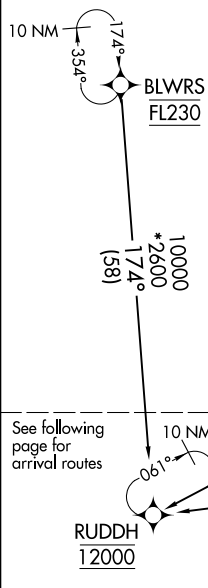
RNAV 1 - DME/DME/IRU or GPS.
RADAR required.

KANSAS CITY APP CON
120.95 318.1
D-ATIS
128.375

(RUDDH.RUDDH3) 23222
RUDDH THREE ARRIVAL (RNAV) Transition Routes

AL-780 (FAA)

KANSAS CITY INTL (MCI)
KANSAS CITY, MISSOURI



See following page for arrival routes

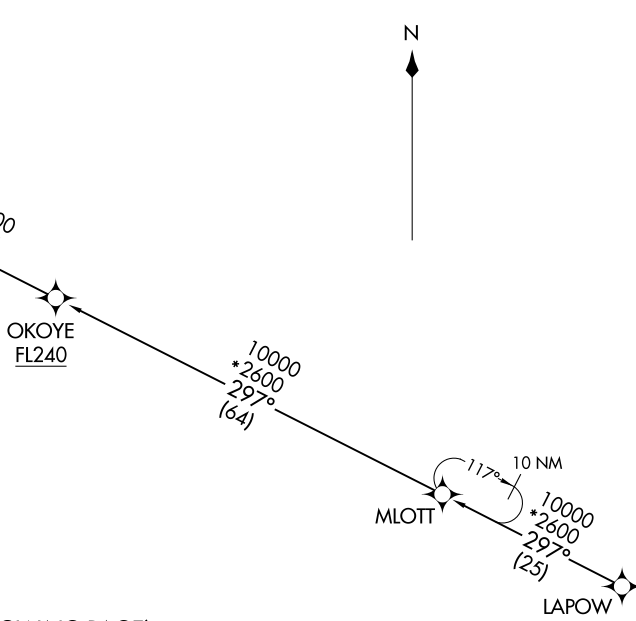


NOTE: Expect runway assignment from Kansas City TRACON upon initial contact.

- BLWRS TRANSITION (BLWRS.RUDDH3)
- BULET TRANSITION (BULET.RUDDH3)
- EUING TRANSITION (EUING.RUDDH3)
- LAPOW TRANSITION (LAPOW.RUDDH3)

(CONTINUED ON FOLLOWING PAGE)

NOTE: Chart not to scale.



RUDDH THREE ARRIVAL (RNAV) Transition Routes
(RUDDH.RUDDH3) 10AUG23

KANSAS CITY, MISSOURI
KANSAS CITY INTL (MCI)

ARRIVAL ROUTE DESCRIPTION

From RUDDH on track 243° to cross PAHLL at or above 7000.

LANDING RUNWAY 1L: From PAHLL on track 235° to CROKS, then on track 234° to FLRNC, then on track 191° to cross DAUSN at 7000 and at 210K, then on track 191°. Expect RADAR vectors to final approach course for RNP, GPS, or ILS RWY 1L approach.

LANDING RUNWAY 1R: From PAHLL on track 233° to FAKIR, then on track 233° to HULLL, then on track 191° to cross BRSKT at 7000 and at 210K, then on track 191°. Expect RADAR vectors to final approach course for RNP, GPS, or ILS RWY 1R approach.

LANDING RUNWAY 9: From PAHLL on track 247° to CHRZZ, then on track 247° to GINJR, then on track 274° to cross GIRLZ at 6000 and at 210K, then on track 274°. Expect RADAR vectors to final approach course for RNP, GPS, or ILS RWY 9 approach.

LANDING RUNWAY 19L: From PAHLL on track 260° to cross EVALN at or above 6000, then on track 260° to cross BUDIE at 4000 and at 210K. Expect RNP Z RWY 19L approach, or expect RADAR vectors to final approach course for ILS or GPS RWY 19L approaches.

LANDING RUNWAY 19R: From PAHLL on track 262° to cross LAMNT at or above 6000, then on track 261° to cross SCIPR at 4000 and at 210K. Expect RNP Z RWY 19R approach, or expect RADAR vectors to final approach course for ILS or GPS RWY 19R approaches.

LANDING RUNWAY 27: From PAHLL on track 221° to cross MINNO at or above 6000, then on track 220° to cross SAWKY at 5000 and at 210K. Expect RNP Z RWY 27 approach, or expect RADAR vectors to final approach course for ILS or GPS RWY 27 approaches.

LOST COMMUNICATIONS

RUNWAY 1L: After DAUSN proceed to CYPRE at 6000 and hold.

RUNWAY 1R: After BRSKT proceed to SPICY at 6000 and hold.

RUNWAY 9: After GIRLZ maintain 6000, proceed to MAXEE and hold.

RUNWAY 19L: After BUDIE proceed to MGEEE at 3600, then on ILS or LOC RWY 19L approach.

RUNWAY 19R: After SCIPR proceed to BRTNY at 3300, then on ILS or LOC RWY 19R approach.

RUNWAY 27: After SAWKY proceed to TAGRT at 4000, then on ILS or LOC RWY 27 approach.

NC-3, 19 MAR 2026 to 16 APR 2026

NC-3, 19 MAR 2026 to 16 APR 2026