

(WUTNG.WUTNG3) 23222

AL-780 (FAA)

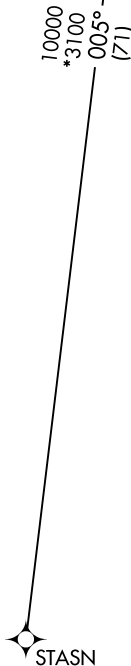
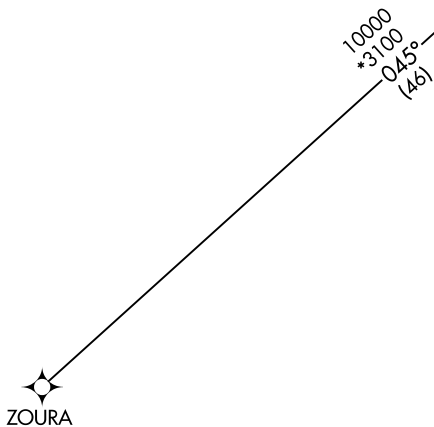
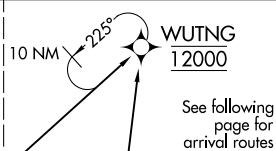
KANSAS CITY INTL (MCI)
KANSAS CITY, MISSOURI

WUTNG THREE ARRIVAL (RNAV) Transition Routes

KANSAS CITY APP CON
120.95 318.1
D-ATIS
128.375

RNAV 1 - DME/DME/IRU or GPS.

RADAR required.



NOTE: Expect runway assignment from Kansas City TRACON upon initial contact.

(CONTINUED ON FOLLOWING PAGE)

STASN TRANSITION (STASN.WUTNG3)

ZOURA TRANSITION (ZOURA.WUTNG3)

NOTE: Chart not to scale.

WUTNG THREE ARRIVAL (RNAV) Transition Routes

(WUTNG.WUTNG3) 10AUG23

KANSAS CITY, MISSOURI
KANSAS CITY INTL (MCI)

NC-3, 19 MAR 2026 to 16 APR 2026

NC-3, 19 MAR 2026 to 16 APR 2026

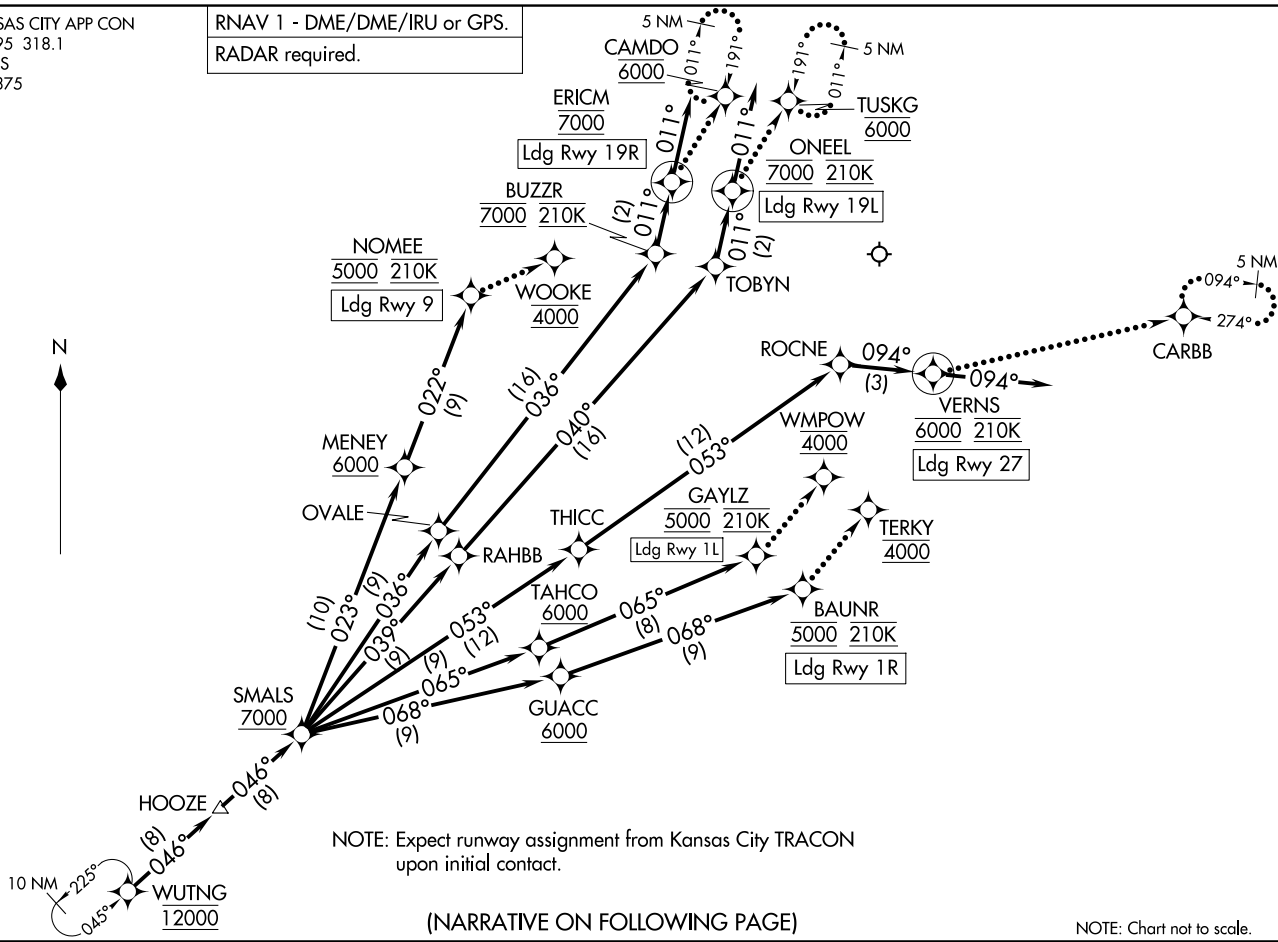
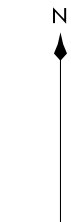
WUTNG THREE ARRIVAL (RNAV) (WUTNG.WUTNG3) 10AUG23

WUTNG THREE ARRIVAL (RNAV) Arrival Routes

KANSAS CITY, MISSOURI
KANSAS CITY INTL (MCI)

KANSAS CITY APP CON
120.95 318.1
D-ATIS
128.375

RNAV 1 - DME/DME/IRU or GPS.
RADAR required.



NOTE: Expect runway assignment from Kansas City TRACON upon initial contact.

(NARRATIVE ON FOLLOWING PAGE)

NOTE: Chart not to scale.

WUTNG.WUTNG3) 23222

Arrival Routes

AL-780 (FAA)

KANSAS CITY INTL (MCI)
KANSAS CITY, MISSOURI

ARRIVAL ROUTE DESCRIPTION

From WUTNG on track 046° to HOOZE, then on track 046° to cross SMALS at or above 7000.

LANDING RUNWAY 1L: From SMALS on track 065° to cross TAHCO at or above 6000, then on track 065° to cross GAYLZ at 5000 and at 210K. Expect RNP Z RWY 1L approach, or expect RADAR vectors to final approach course for ILS or GPS RWY 1L approaches.

LANDING RUNWAY 1R: From SMALS on track 068° to cross GUACC at or above 6000, then on track 068° to cross BAUNR at 5000 and at 210K. Expect RNP Z RWY 1R approach, or expect RADAR vectors to final approach course for ILS or GPS RWY 1R approaches.

LANDING RUNWAY 9: From SMALS on track 023° to cross MENEY at or above 6000, then on track 022° to cross NOMEЕ at 5000 and at 210K. Expect RNP Z RWY 9 approach, or expect RADAR vectors to final approach course for ILS or GPS RWY 9 approaches.

LANDING RUNWAY 19L: From SMALS on track 039° to RAHBB, then on track 040° to TOBYN, then on track 011° to cross ONEEL at 7000 and at 210K, then on track 011°. Expect RADAR vectors to final approach course for RNP, GPS, or ILS RWY 19L approach.

LANDING RUNWAY 19R: From SMALS on track 036° to OVALE, then on track 036° to cross BUZZR at 7000 and at 210K, then on track 011° to cross ERICM at 7000, then on track 011°. Expect RADAR vectors to final approach course for RNP, GPS, or ILS RWY 19R approach.

LANDING RUNWAY 27: From SMALS on track 053° to THICC, then on track 053° to ROCNE, then on track 094° to cross VERNs at 6000 and at 210K, then on track 094°. Expect RADAR vectors to final approach course for RNP, GPS, or ILS RWY 27 approach.

LOST COMMUNICATIONS

RUNWAY 1L: After GAYLZ proceed to WMPOW at 4000, then on ILS or LOC RWY 1L approach.

RUNWAY 1R: After BAUNR proceed to TERKY at 4000, then on ILS or LOC RWY 1R approach.

RUNWAY 9: After NOMEЕ proceed to WOOKE at 4000, then on ILS or LOC RWY 9 approach.

RUNWAY 19L: After ONEEL proceed to TUSKG at 6000 and hold.

RUNWAY 19R: After ERICM proceed to CAMDO at 6000 and hold.

RUNWAY 27: After VERNs maintain 6000, proceed to CARBB and hold..

NC-3, 19 MAR 2026 to 16 APR 2026

NC-3, 19 MAR 2026 to 16 APR 2026