

WAAS CH <b>87007</b> <b>W33A</b>	APP CRS <b>326°</b>	Rwy Ldg TDZE Apt Elev	<b>5006</b> <b>2193</b> <b>2193</b>
--	------------------------	-----------------------------	---

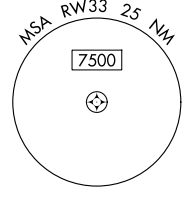
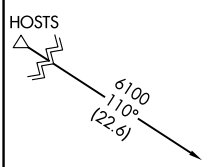
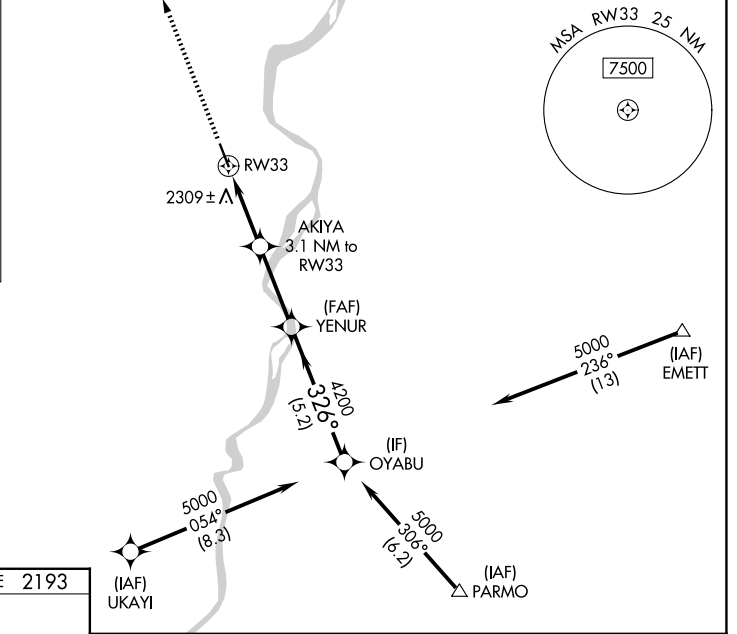
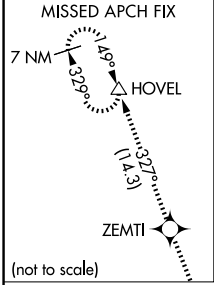
# RNAV (GPS) RWY 33

ONTARIO MUNI (ONO)

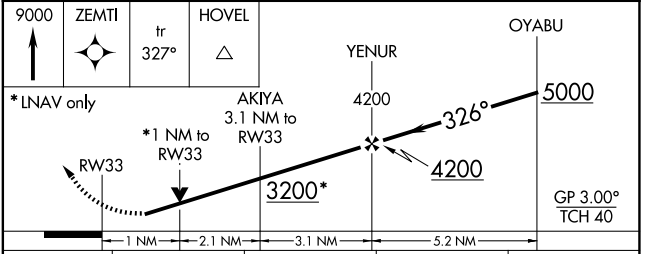
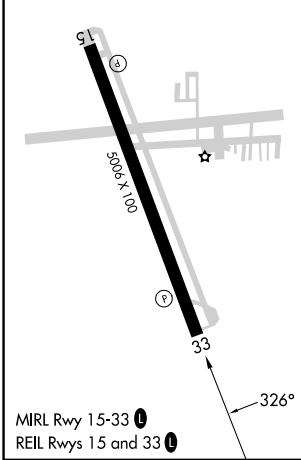
**⚠** For uncompensated Baro-VNAV systems, LNAV/VNAV NA below -18°C (0°F) or above 54°C (130°F). DME/DME RNP -0.3 NA. Baro-VNAV and VDP NA when using Caldwell altimeter setting. When local altimeter setting not received, use Caldwell altimeter setting and increase all DA to 2541 feet and increase LPV and LNAV/VNAV visibility 3/8 SM all Cats; increase all MDA 100 feet and increase LNAV Cat C and D 3/8 SM and Circling Cat C visibility 1/4 SM. Circling Rwy 15 NA at night. Rwy 33 helicopter visibility reduction below 3/4 SM NA.

**MISSED APPROACH:** Climb to 9000 direct ZEMTI and on track 327° to HOVEL and hold, continue climb-in-hold 9000.

ASOS <b>135.275</b>	SALT LAKE CENTER <b>128.05 306.95</b>	UNICOM <b>122.8 (CTAF) 0</b>
------------------------	--	---------------------------------



ELEV 2193	TDZE 2193
-----------	-----------



CATEGORY	A	B	C	D
LPV DA		2443-7/8	250 (300-7/8)	
LNAV/VNAV DA		2443-7/8	250 (300-7/8)	
LNAV MDA		2560-1	367 (400-1)	
CIRCLING	2760-1 567 (600-1)	2800-1 607 (700-1)	3120-2 3/4 927 (1000-2 3/4)	3240-3 1047 (1100-3)

NW-1, 19 MAR 2026 to 16 APR 2026

NW-1, 19 MAR 2026 to 16 APR 2026