

| | | | |
|--|------------------------|---|---|
| VORTAC HYS 110.4 Chan 41 | APP CRS 076° | Rwy Ldg TDZE Apt Elev 1864 | N/A N/A 1864 |
|--|------------------------|---|---|

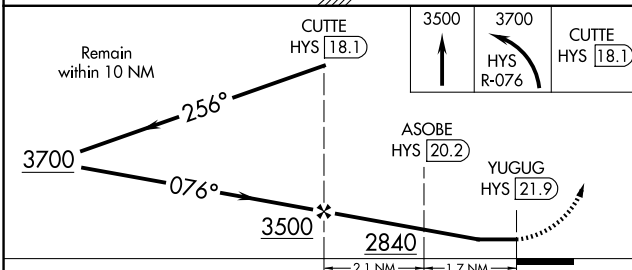
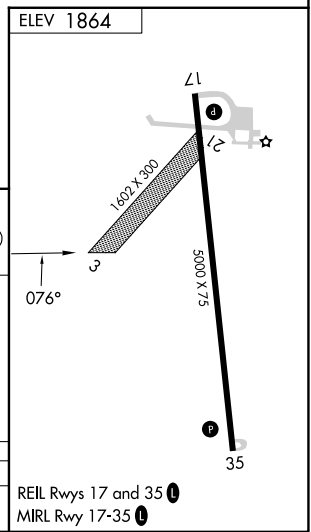
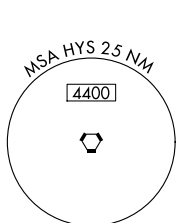
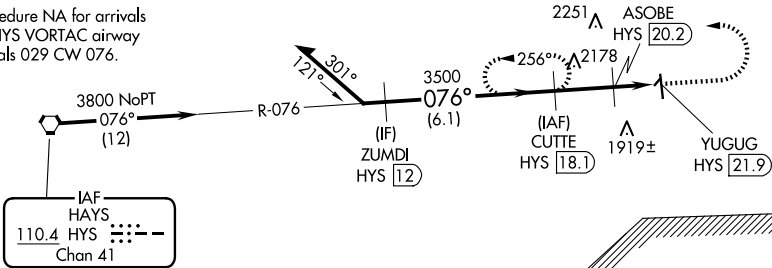
VOR/DME-A RUSSELL MUNI (RSL)

⚠ When local altimeter setting not received, use Hays altimeter setting; increase all MDA 80 feet and Cat C visibility ¼ SM. Circling NA to Rwy 3 and 21.

MISSED APPROACH: Climb to 3500 then climbing left turn to 3700 via HYS R-076 to CUTTE/18.1 DME and hold.

| | | |
|------------------------|--|-------------------------------|
| ASOS 128.325 | KANSAS CITY CENTER 124.4 322.4 | UNICOM 122.7 (CTAF) |
|------------------------|--|-------------------------------|

Procedure NA for arrivals on HYS VORTAC airway radials 029 CW 076.



| CATEGORY | A | B | C | D |
|----------|-----------------------|-------------------------|-------------------------|----|
| CIRCLING | 2240-1 376 (400-1) | 2320-1¼ 456 (500-1¼) | 2620-2¼ 756 (800-2¼) | NA |

REIL Rwys 17 and 35
MIRL Rwy 17-35

NC-2, 19 MAR 2026 to 16 APR 2026

NC-2, 19 MAR 2026 to 16 APR 2026