

LOC/DME I-LFT <b>109.5</b> Chan <b>32</b>	APP CRS <b>216°</b>	Rwy Ldg TDZE <b>37</b> Apt Elev <b>41</b>
---	------------------------	---

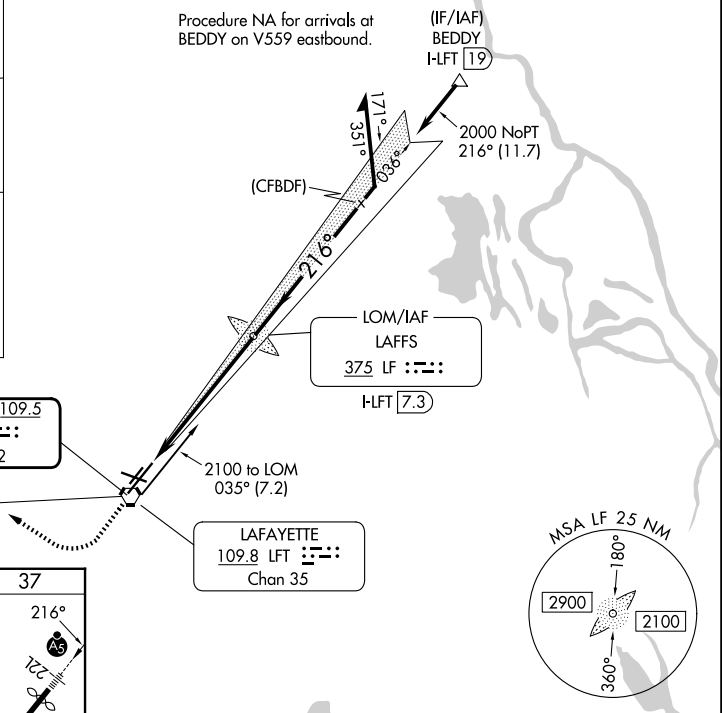
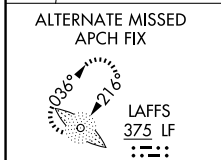
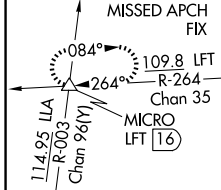
# ILS or LOC RWY 22L

LAFAYETTE RGNL/PAUL FOURNET FLD (L.F'T)

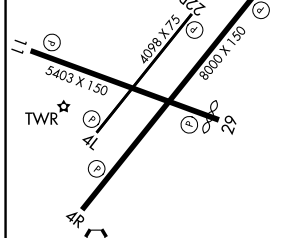
**⚠** Circling Rwy 11, 4R, 4L, and 22R NA at night. Rwy 22L helicopter visibility reduction below RVR 4000 NA. Inop table does not apply to S-ILS 22L all Cats. When local altimeter setting not received, use ARA altimeter setting and increase S-ILS 22L DA to 316 feet, increase all MDAs 40 feet and S-LOC 22L visibility Cat C/D to RVR 5000 and Circling visibility Cat C/D ¼ SM. VDP NA when using ARA altimeter setting. For inop ALS, increase S-LOC 22L Cat A and B visibility to RVR 5500.

**MALS**R  
  
**MISSED APPROACH:**  
 Climb to 800 then climbing right turn to 2100 on LFT VORTAC R-264 to MICRO INT/ LFT 16 DME and hold.

ATIS <b>134.05</b>	LAFAYETTE APP CON★ <b>121.1 363.0</b>	LAFAYETTE TOWER★ <b>118.5 (CTAF) 0 257.8</b>	GND CON <b>121.8</b>	UNICOM <b>122.95</b>
-----------------------	--	---	-------------------------	-------------------------



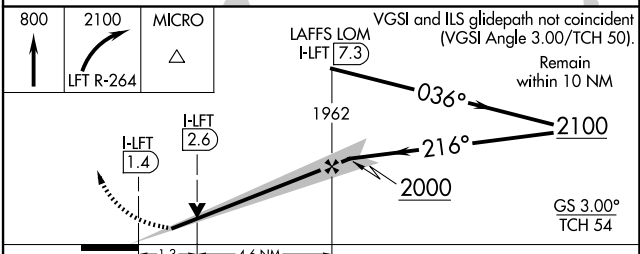
ELEV 41	<b>D</b>	TDZE 37
---------	----------	---------



REIL Rwys 4L, 4R, 11, 22R and 29  
 MIRL Rwys 11-29 and 4L-22R  
 HIRL Rwy 4R-22L

FAF to MAP 5.9 NM

Knots	60	90	120	150	180
Min:Sec	5:54	3:56	2:57	2:22	1:58



CATEGORY	A	B	C	D
S-ILS 22L		292/40	255 (300-¾)	
S-LOC 22L	480/40	443 (500-¾)	480/45	443 (500-¾)
CIRCLING	540-1 499 (500-1)	580-1 539 (600-1)	700-1¾ 659 (700-1¾)	700-2 659 (700-2)

SC-4, 19 MAR 2026 to 16 APR 2026

SC-4, 19 MAR 2026 to 16 APR 2026