

| | | |
|---|------------------------|---|
| LOC/DME I-TYN 110.9 Chan 46 | APP CRS 036° | Rwy Ldg 8000 TDZE 39 Apt Elev 41 |
|---|------------------------|---|

ILS or LOC RWY 4R

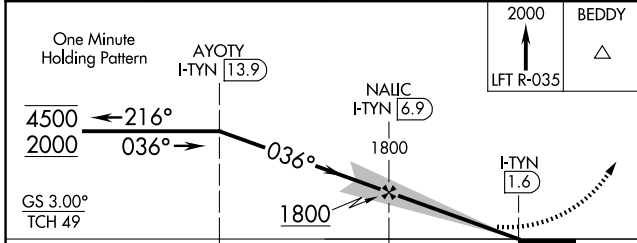
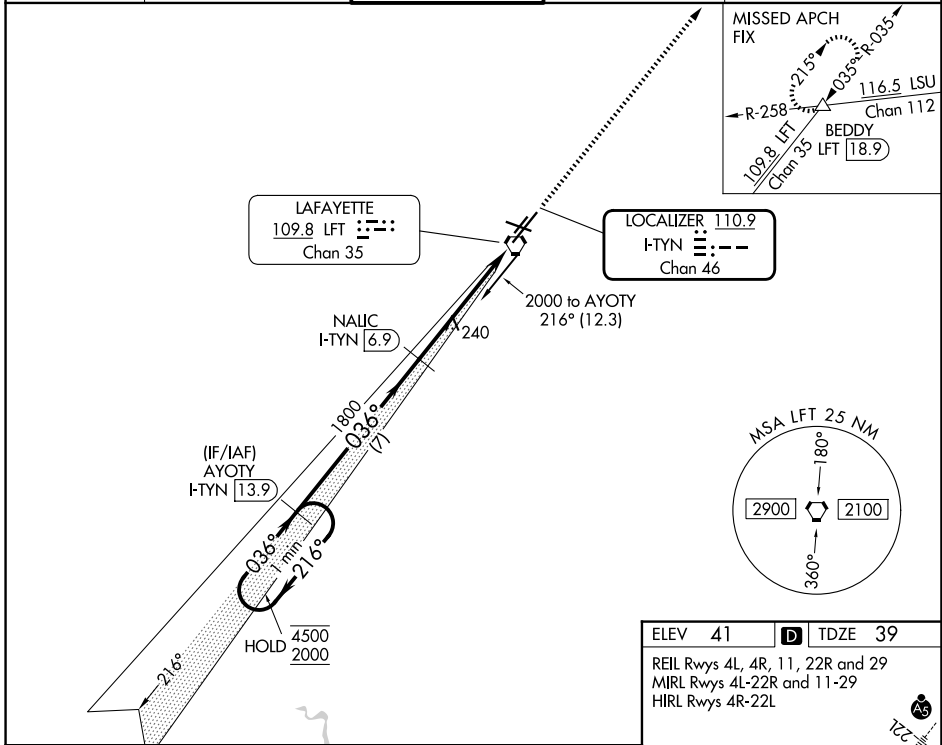
LAFAYETTE RGNL/PAUL FOURNET FLD (LFT)

DME required for procedure entry and for LOC only.

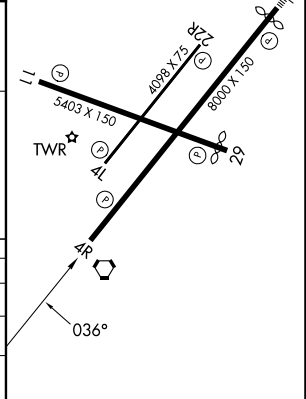
⚠ Rwy 4R helicopter visibility reduction below 1 SM NA. Circling to Rwy 4L, 11, and 22R NA at night. Rwy 4R Straight-in and Circling minimums NA at night. When local altimeter setting not received, use ARA altimeter setting and increase S-ILS 4R DA to 350 feet, increase all MDAs 40 feet and Circling visibility Cat C/D ¼ SM.

MISSED APPROACH: Climb to 2000 on LFT VORTAC R-035 to BEDDY INT/LFT 18.9 DME and hold.

| | | | | |
|-----------------------|--|---|-------------------------|-------------------------|
| ATIS 134.05 | LAFAYETTE APP CON★ 121.1 363.0 | LAFAYETTE TOWER★ 118.5 (CTAF) 0 257.8 | GND CON 121.8 | UNICOM 122.95 |
|-----------------------|--|---|-------------------------|-------------------------|



| | |
|---------------------------------|-------------------------|
| ELEV 41 | D TDZE 39 |
| REIL Rwy 4L, 4R, 11, 22R and 29 | |
| MIRL Rwy 4L-22R and 11-29 | |
| HIRL Rwy 4R-22L | |



| CATEGORY | A | B | C | D |
|----------|----------------------|----------------------|------------------------|----------------------|
| S-ILS 4R | 321-1 | | 282 (300-1) | |
| S-LOC 4R | 500-1 | 461 (500-1) | 500-1½ | 461 (500-1½) |
| CIRCLING | 540-1 499 (500-1) | 580-1 539 (600-1) | 700-1¾ 659 (700-1¾) | 700-2 659 (700-2) |

SC-4, 19 MAR 2026 to 16 APR 2026

SC-4, 19 MAR 2026 to 16 APR 2026