

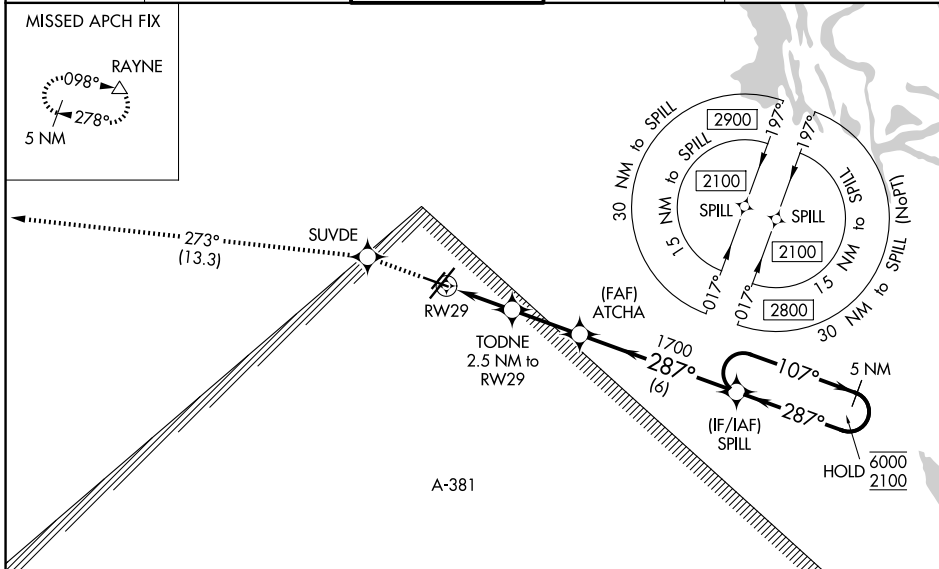
WAAS CH 45703 W29A	APP CRS 287°	Rwy Ldg 5155 TDZE 41 Apt Elev 41
--	------------------------	---

RNAV (GPS) RWY 29

LAFAYETTE RGNL/PAUL FOURNET FLD (L.F.T)

RNP APCH - GPS.		MISSED APPROACH: Climb to 2800 direct SUVDE and on track 273° to RAYNE and hold.
<p>⚠ Rwy 29 helicopter visibility reduction below 3/4 SM NA. For uncompensated Baro-VNAV systems, LNAV/VNAV NA below -4°C or above 54°C. Circling Rwy 11, 4R, 4L, and 22R NA at night. Baro-VNAV and VDP NA when using ARA altimeter setting. When local altimeter setting not received, use ARA altimeter setting and increase LPV DA to 320 feet and all visibilities 1/2 SM. Increase LNAV/VNAV DA to 320 feet and visibilities 1/2 SM. Increase all MDAs 40 feet and LNAV visibility Cat C/D 1/2 SM, and Circling visibility Cat C/D 1/2 SM.</p>		

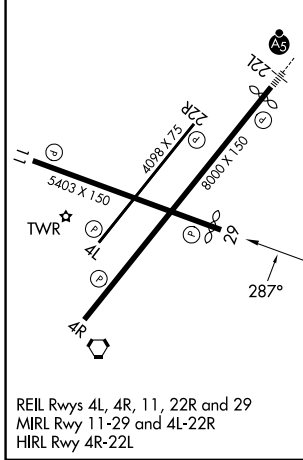
ATIS 134.05	LAFAYETTE APP CON★ 121.1 363.0	LAFAYETTE TOWER★ 118.5 (CTAF) 257.8	GND CON 121.8	UNICOM 122.95
-----------------------	--	---	-------------------------	-------------------------



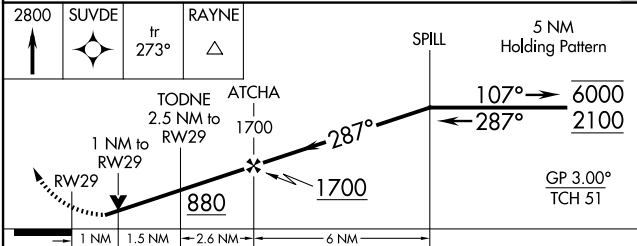
SC-4, 19 MAR 2026 to 16 APR 2026

SC-4, 19 MAR 2026 to 16 APR 2026

ELEV 41	D	TDZE 41
---------	----------	---------



REIL Rws 4L, 4R, 11, 22R and 29
MIRL Rwy 11-29 and 4L-22R
HIRL Rwy 4R-22L



CATEGORY	A	B	C	D
LPV DA		291-3/4	250 (300-3/4)	
LNAV/VNAV DA		291-3/4	250 (300-3/4)	
LNAV MDA		400-1	359 (400-1)	
CIRCLING	500-1 459 (500-1)	580-1 539 (600-1)	700-1 3/4 659 (700-1 3/4)	700-2 659 (700-2)