

JAIKE FOUR ARRIVAL (RNAV) Transition Routes

TETERBORO, NEW JERSEY

WASHINGTON CENTER
 132.52
 PHILADELPHIA APP CON
 124.35 319.15
 NEWARK APP CON
 132.8 379.9
 CDW ATIS
 135.5
 MMU ATIS
 124.25
 TEB D-ATIS
 114.2 132.85

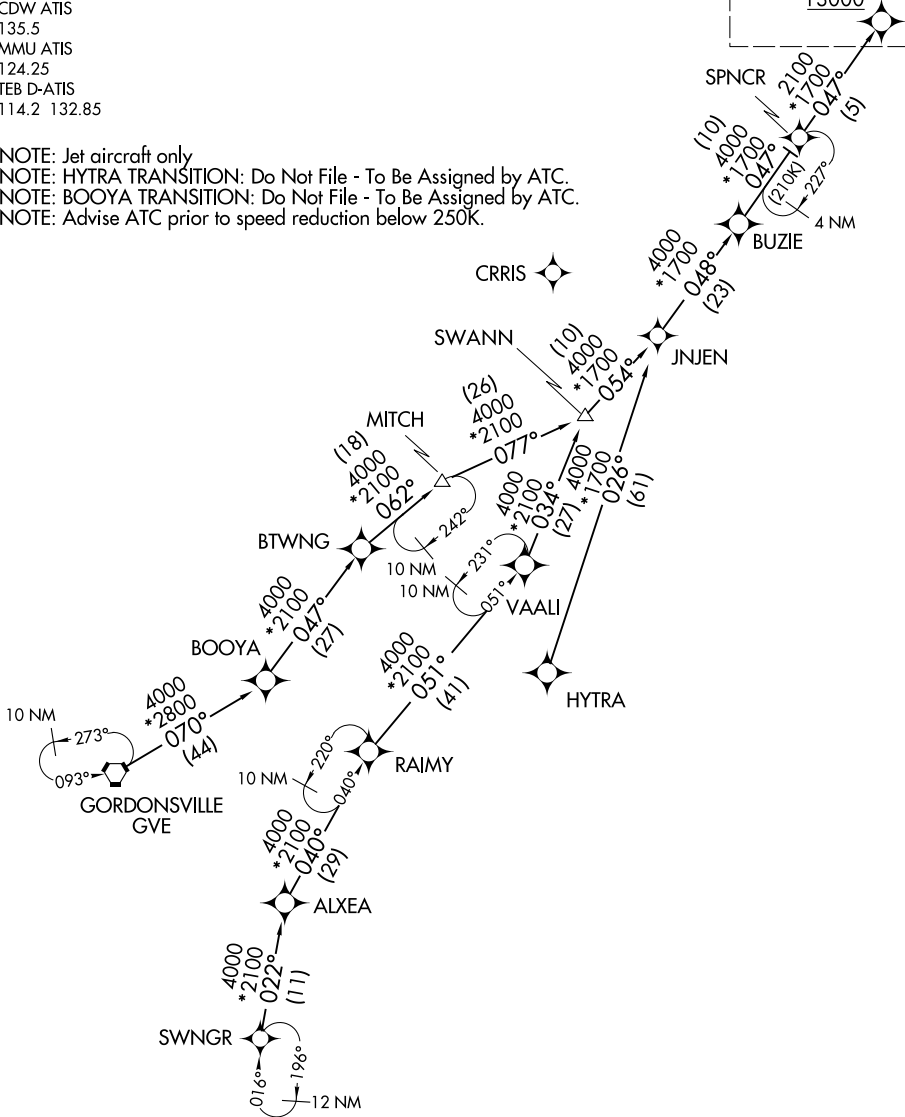
RNAV 1 - DME/DME/IRU or GPS.

RADAR required.

See following page for Arrival Routes.

JAIKE
13000

NOTE: Jet aircraft only
 NOTE: HYTRA TRANSITION: Do Not File - To Be Assigned by ATC.
 NOTE: BOOYA TRANSITION: Do Not File - To Be Assigned by ATC.
 NOTE: Advise ATC prior to speed reduction below 250K.



NE-2, 19 MAR 2026 to 16 APR 2026

NE-2, 19 MAR 2026 to 16 APR 2026

(CONTINUED ON FOLLOWING PAGE)

NOTE: Chart not to scale.

JAIKE FOUR ARRIVAL (RNAV) Transition Routes

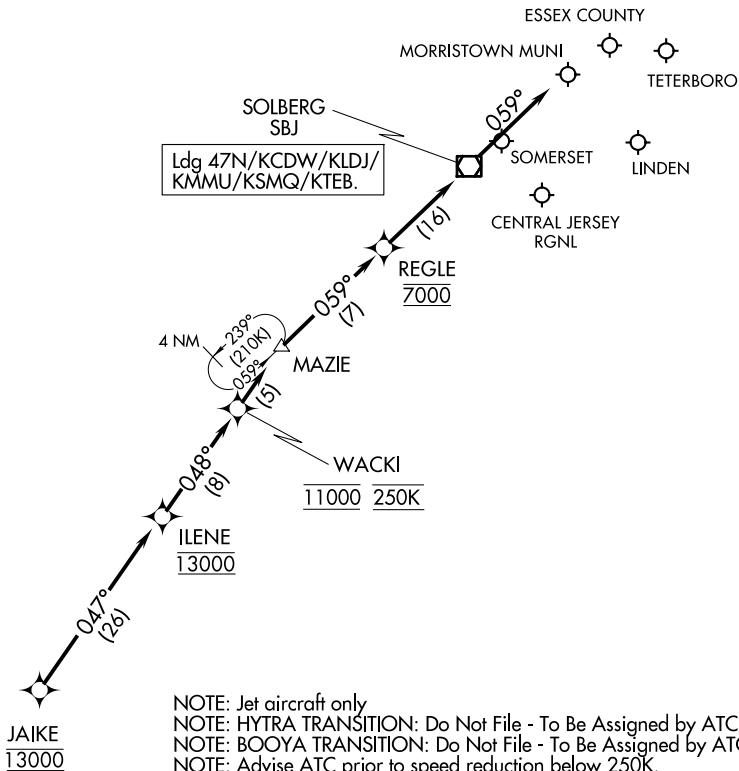
TETERBORO, NEW JERSEY

JAIKE FOUR ARRIVAL (RNAV) Arrival Routes

TETERBORO, NEW JERSEY

WASHINGTON CENTER
 132.52
 PHILADELPHIA APP CON
 124.35 319.15
 NEWARK APP CON
 132.8 379.9
 CDW ATIS
 135.5
 MMU ATIS
 124.25
 TEB D-ATIS
 114.2 132.85

RNAV 1 - DME/DME/IRU or GPS.
 RADAR required.



NOTE: Jet aircraft only
 NOTE: HYTRA TRANSITION: Do Not File - To Be Assigned by ATC.
 NOTE: BOOYA TRANSITION: Do Not File - To Be Assigned by ATC.
 NOTE: Advise ATC prior to speed reduction below 250K.

NOTE: Chart not to scale.

ARRIVAL ROUTE DESCRIPTION

- BOOYA TRANSITION (BOOYA.JAIKE4):
- GORDONSVILLE TRANSITION (GVE.JAIKE4):
- HYTRA TRANSITION (HYTRA.JAIKE4):
- SWANN TRANSITION (SWANN.JAIKE4):
- SWNGR TRANSITION (SWNGR.JAIKE4):

LANDING ALL AIRPORTS: From JAIKE on track 047° to cross ILENE at 13000, then on track 048° to cross WACKI at 11000 and at 250K, then on track 048° to MAZIE, then on track 059° to cross REGLE at 7000, then on track 059° to SBJ VOR/DME, then on track 059°. Expect RADAR vectors to final approach course.