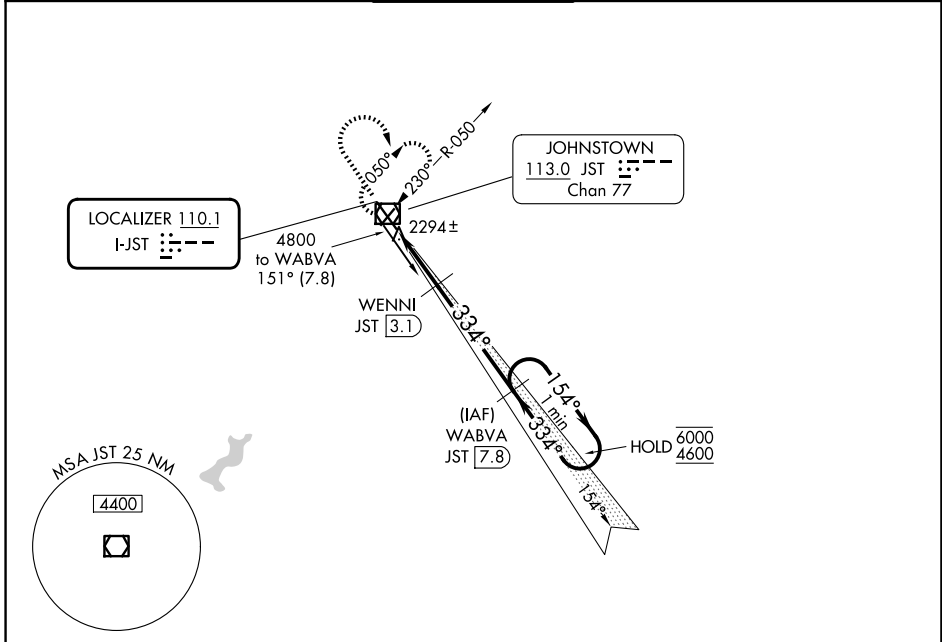


LOC I-JST <b>110.1</b>	APP CRS <b>334°</b>	Rwy Ldg TDZE Apt Elev	<b>6484</b> <b>2281</b> <b>2284</b>
---------------------------	------------------------	-----------------------------	---

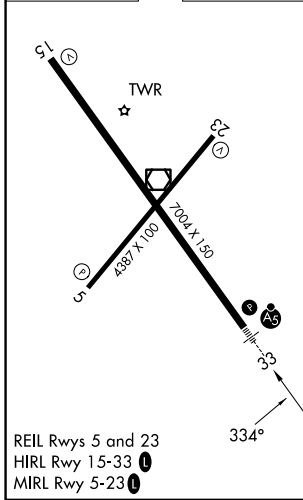
# ILS or LOC RWY 33

JOHN MURTHA JOHNSTOWN/CAMBRIA COUNTY (JST)

DME required. ▼ Glide slope unusable beyond 5 degrees left of course. ▲ For inop ALS, increase S-LOC 33 Cat C/D visibility to 7/8 SM.		MALSR AS	MISSED APPROACH: Climb to 3700 then climbing right turn to 4600 direct JST VOR/DME and hold, continue climb-in-hold to 4600.	
ATIS <b>118.325</b>	JOHNSTOWN APP CON ★ <b>121.2 299.2</b>	JOHNSTOWN TOWER ★ <b>125.75</b> (CTAF) <b>0</b>	GND CON <b>121.6</b>	UNICOM <b>122.95</b>



ELEV 2284	<b>D</b>	TDZE 2281
-----------	----------	-----------



REIL Rws 5 and 23  
HIRL Rwy 15-33 **0**  
MIRL Rwy 5-23 **0**

3700	4600	JST	VGSI and ILS glidepath not coincident (VGSI Angle 3.00/TCH 53).	One Minute Holding Pattern
↑	↷			
CATEGORY	A	B	C	D
S-ILS 33	2481-1/2		200 (200-1/2)	
S-LOC 33	2600-1/2		319 (400-1/2)	
CIRCLING	2700-1	2880-1	2880-1 1/2	3000-2 1/4
	416 (500-1)	596 (600-1)	596 (600-1 1/2)	716 (800-2 1/4)

NE-4, 19 MAR 2026 to 16 APR 2026

NE-4, 19 MAR 2026 to 16 APR 2026