

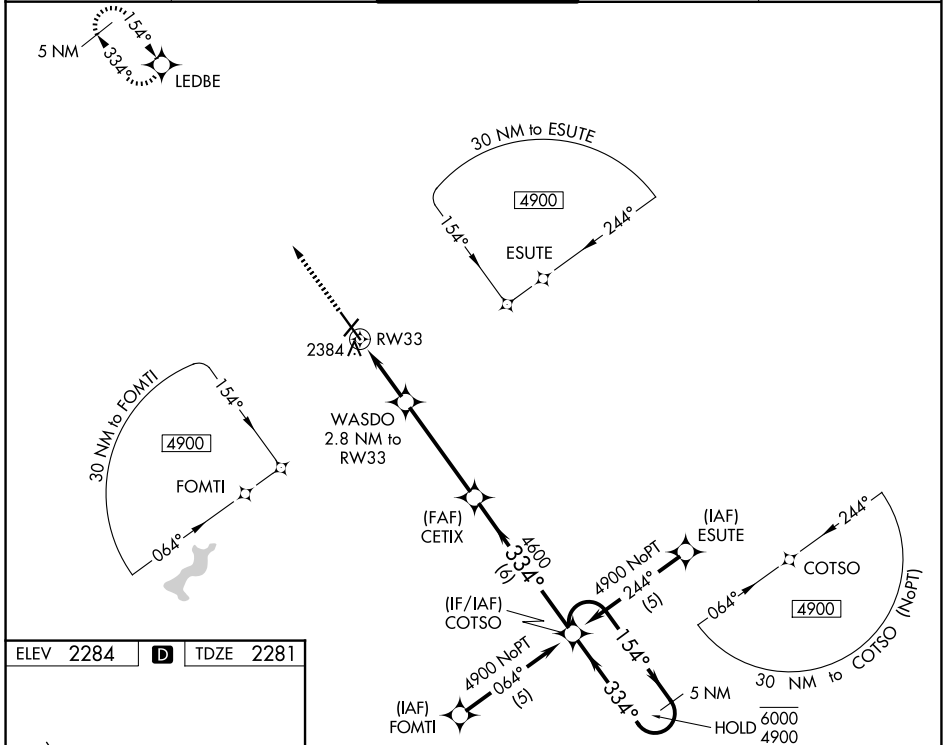
WAAS CH 61113 W33A	APP CRS 334°	Rwy Ldg TDZE Apt Elev	6484 2281 2284
----------------------------------------	------------------------	-----------------------------	-------------------------------------------

RNAV (GPS) RWY 33

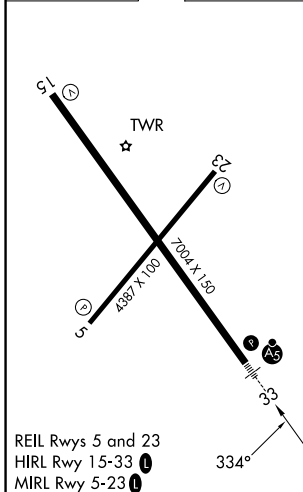
JOHN MURTHA JOHNSTOWN/CAMBRIA COUNTY (JST)

RNP APCH.	MALSR	MISSED APPROACH: Climb to 4800 direct LEDBE and hold.
<p>▼ Inop table does not apply to LNAV Cat D. For uncompensated Baro-VNAV systems, LNAV/VNAV NA below -19°C or above 54°C. For inop ALS increase LNAV/VNAV all Cats visibility to ½ SM and LNAV Cat C visibility to 1 SM.</p> <p>▲</p>		

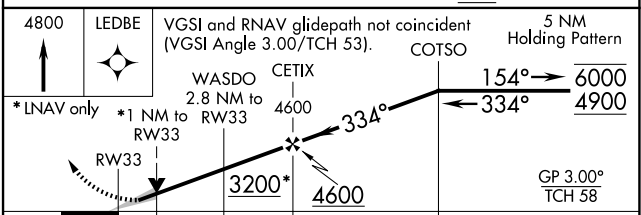
ATIS 118.325	JOHNSTOWN APP CON ★ 121.2 299.2	JOHNSTOWN TOWER ★ 125.75 (CTAF) 0	GND CON 121.6	UNICOM 122.95
------------------------	-------------------------------------------	---------------------------------------------	-------------------------	-------------------------



ELEV 2284	D	TDZE 2281
-----------	----------	-----------



REIL Rwy 5 and 23
HIRL Rwy 15-33
MIRL Rwy 5-23



CATEGORY	A	B	C	D
LPV DA	2481-½		200 (200-½)	
LNAV/VNAV DA	2552-½		271 (300-½)	
LNAV MDA	2640-½		2552-¾	
CIRCLING	2700-1		271 (300-¾)	
	416 (500-1)		271 (300-¾)	
	2880-1		2640-1	
	596 (600-1)		359 (400-1)	
	2880-1½		2640-1	
	596 (600-1½)		359 (400-1)	
	3000-2¼		2640-1	
	716 (800-2¼)		359 (400-1)	

NE-4, 19 MAR 2026 to 16 APR 2026

NE-4, 19 MAR 2026 to 16 APR 2026