

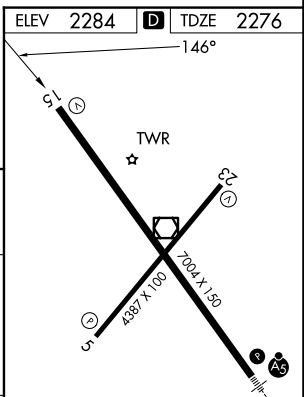
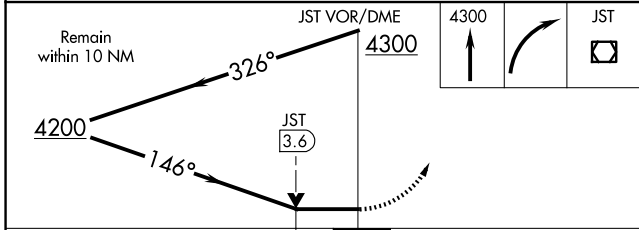
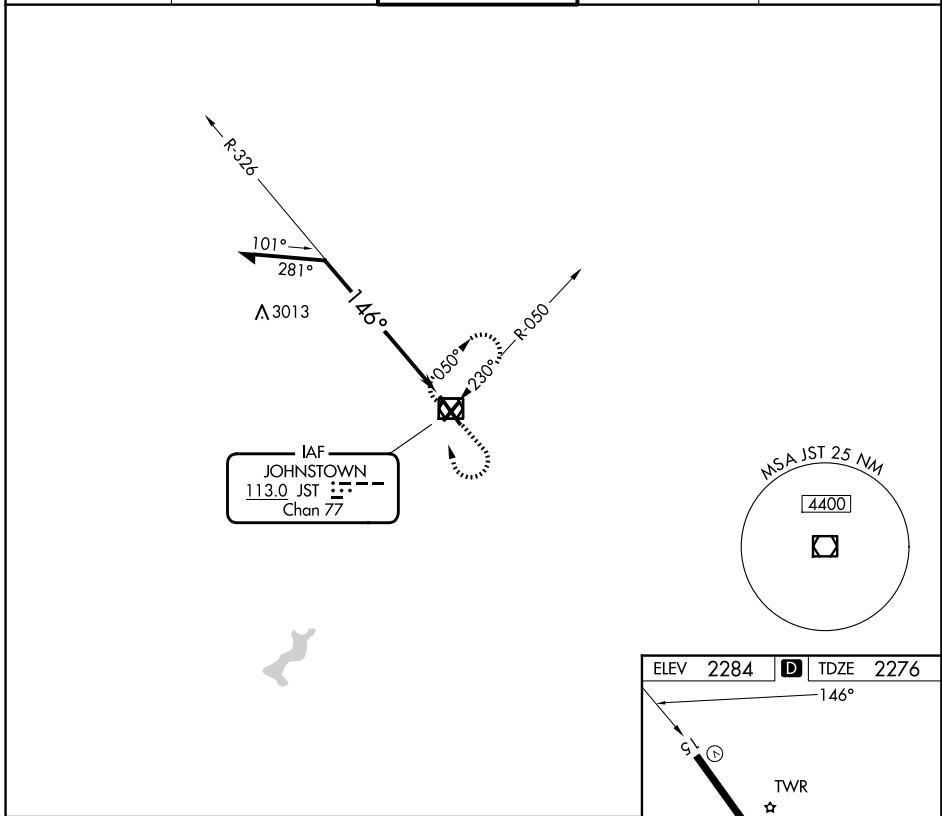
VOR/DME JST <b>113.0</b> Chan 77	APP CRS <b>146°</b>	Rwy Ldg TDZE Apt Elev <b>6698</b> <b>2276</b> <b>2284</b>
--	------------------------	--

# VOR Y RWY 15

JOHN MURTHA JOHNSTOWN/CAMBRIA COUNTY (JST)

		MISSED APPROACH: Climb to 4300 then right turn direct JST VOR/DME and hold.		
--	--	---	--	--

ATIS <b>118.325</b>	JOHNSTOWN APP CON ★ <b>121.2 299.2</b>	JOHNSTOWN TOWER ★ <b>125.75 (CTAF) 0</b>	GND CON <b>121.6</b>	UNICOM <b>122.95</b>
------------------------	---	---	-------------------------	-------------------------



CATEGORY	A	B	C	D
S-15	3300-1¼ 1024 (1100-1¼)	3300-1½ 1024 (1100-1½)	3300-3	1024 (1100-3)
CIRCLING	3300-1¼ 1016 (1100-1¼)	3300-1½ 1016 (1100-1½)	3300-3	1016 (1100-3)

REIL Rwy 5 and 23  
HIRL Rwy 15-33 0  
MIRL Rwy 5-23 0

NE-4, 19 MAR 2026 to 16 APR 2026

NE-4, 19 MAR 2026 to 16 APR 2026

# VOR Y RWY 15