

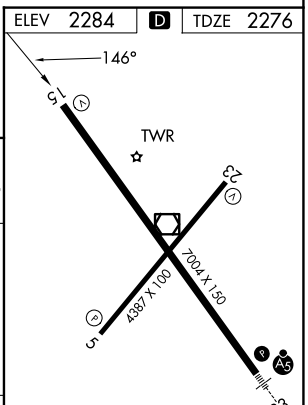
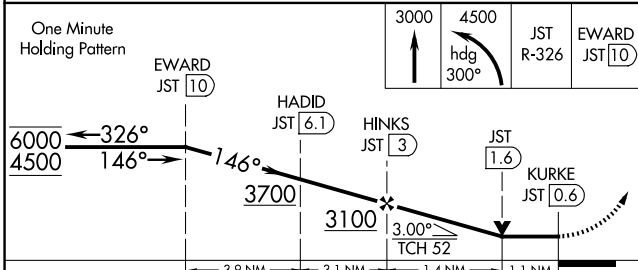
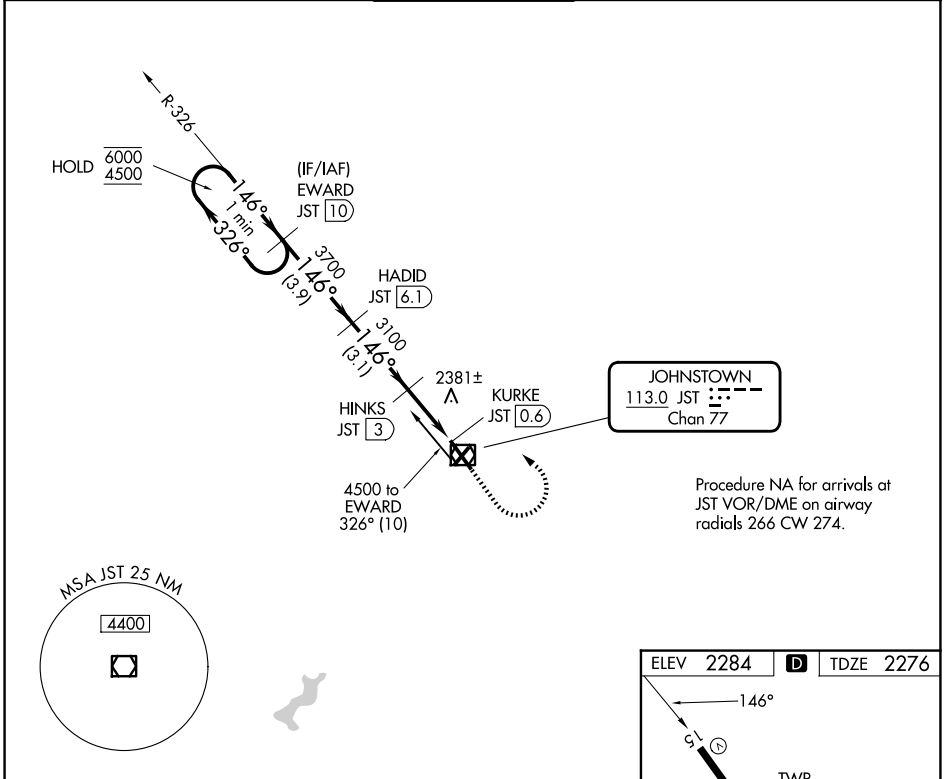
VOR/DME JST 113.0 Chan 77	APP CRS 146°	Rwy Ldg TDZE Apt Elev	6698 2276 2284
--	------------------------	-----------------------------	---

VOR Z RWY 15

JOHN MURTHA JOHNSTOWN/CAMBRIA COUNTY (JST)

DME required.		MISSED APPROACH: Climb to 3000 then climbing left turn to 4500 on heading 300° and JST VOR/DME R-326 to EWARD /10 DME and hold.		
---------------	--	---	--	--

ATIS 118.325	JOHNSTOWN APP CON * 121.2 299.2	JOHNSTOWN TOWER * 125.75 (CTAF) 0	GND CON 121.6	UNICOM 122.95
------------------------	---	---	-------------------------	-------------------------



CATEGORY	A	B	C	D
S-15	2660-1	384 (400-1)	2660-1 $\frac{1}{8}$	384 (400-1 $\frac{1}{8}$)
CIRCLING	2700-1 416 (500-1)	2880-1 596 (600-1)	2880-1 $\frac{1}{2}$ 596 (600-1 $\frac{1}{2}$)	3000-2 $\frac{1}{4}$ 716 (800-2 $\frac{1}{4}$)

REIL Rwys 5 and 23
HIRL Rwy 15-33
MIRL Rwy 5-23

VOR Z RWY 15

NE-4, 19 MAR 2026 to 16 APR 2026

NE-4, 19 MAR 2026 to 16 APR 2026