

20310

# SWOLF-NINE DEPARTURE (SWOLF9 • SWOLF)

MIRAMAR MCAS (JOE FOSS FLD) (KNKX)

SAN DIEGO, CALIFORNIA

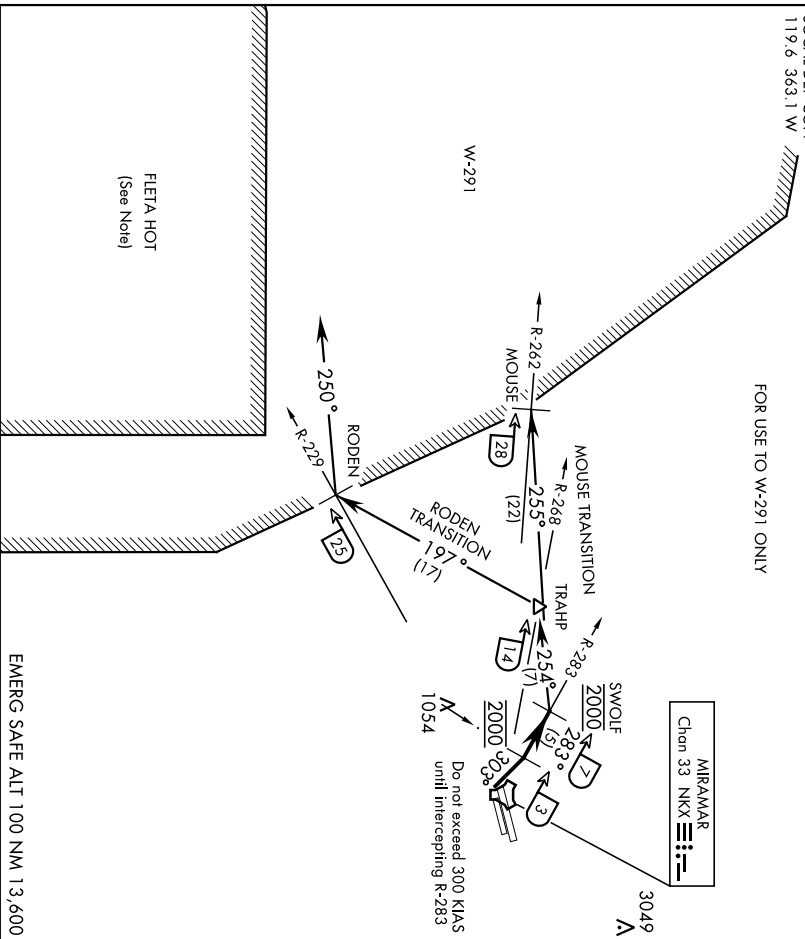
ATS ★ 133.475 352.0  
CLNC DEL  
125.975 254.325  
GND CON  
128.625 307.325  
FOSS TOWER ★  
135.2 298.925  
SOCAL DEP CON  
119.6 363.1 W

SHL-903 [USN]

| Rwy   | Knots       | 60  | 120  | 180  | 240  | 300  | 360  |
|-------|-------------|-----|------|------|------|------|------|
| 24L/R | V/V[ft/min] | 780 | 1560 | 2340 | 3120 | 3900 | 4680 |

ATC Climb Rate to 2000

FOR USE TO W-291 ONLY



## DEPARTURE ROUTE DESCRIPTION

TAKE-OFF RWWY 24L/R: Climbing right turn to 2000 via heading 303° to intercept and proceed via NKX TACAN R-283 to SWOLF. Complete turn within NKX 2 DME. Cross NKX R-283/3 DME at 2000 mandatory. Maintain 2000 at SWOLF mandatory. Thence...

MOUSE TRANSITION (SWOLF9 • MOUSE): Turn left heading 255° to intercept NKX R-262 at MOUSE. Maintain 2000 for entry into W-291.

(Continued on next page)

# SWOLF-NINE DEPARTURE (SWOLF9 • SWOLF)

Orig 10OCT19

SAN DIEGO, CALIFORNIA  
MIRAMAR MCAS (JOE FOSS FLD) (KNKX)

**SWOLF-NINE DEPARTURE (SWOLF9 • SWOLF)**

MIRAMAR MCAS (JOE FOSS FLD) (KNKX)  
SAN DIEGO, CALIFORNIA

SHL-903 [USN]

**DEPARTURE ROUTE DESCRIPTION**  
(Continued)

RODEN TRANSITION (SWOLF9 • RODEN): Turn left heading 254 ° to intercept  
NKX R-268 at TRAHF. Then turn left heading 197° to intercept NKX R-229 at RODEN.  
Maintain 2000 for entry into W-291 via heading 250°.

**NOTE:**

- (1) FLETA HOT-ACTIVE FIRING AREA (DANGER, REMAIN CLEAR).
- (2) ALL AIRCRAFT SHOULD MAINTAIN LAST ASSIGNED HEADING/RADIAL  
AND ALTITUDE TO AVOID INBOUND MILITARY OR CIVIL AIRCRAFT AT  
HIGHER ALTITUDES!

**SWOLF-NINE DEPARTURE (SWOLF9 • SWOLF)**  
Orig 10OCT19

SAN DIEGO, CALIFORNIA  
MIRAMAR MCAS (JOE FOSS FLD) (KNKX)