

VITKO-THREE DEPARTURE (VITK03, VITKO)

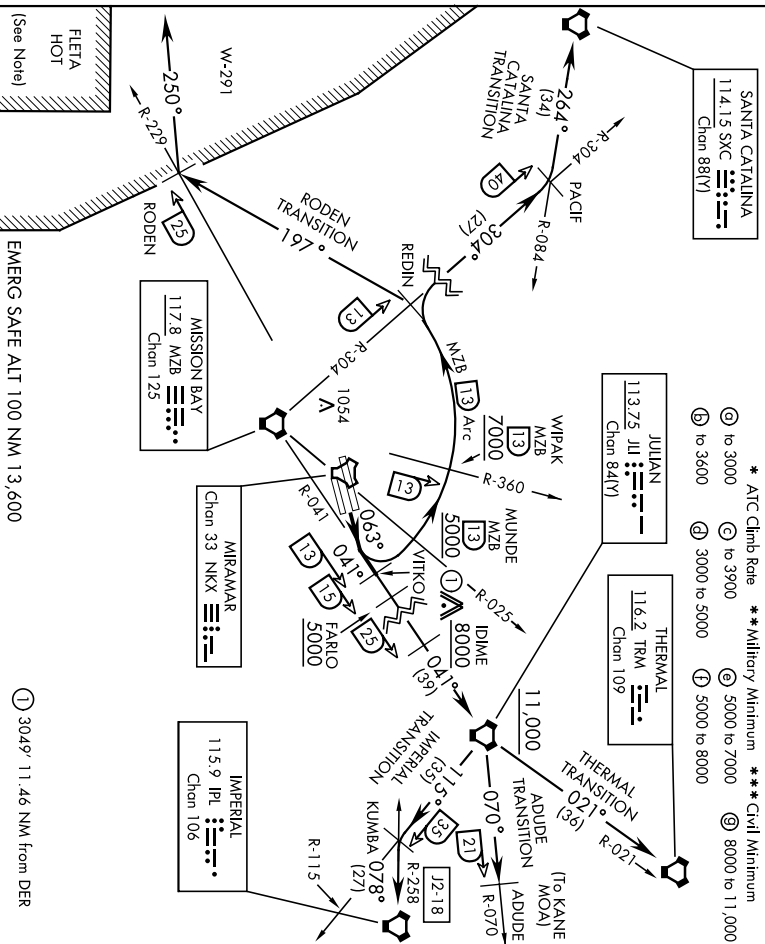
MIRAMAR MCAS (JOE FOSS FLD) (KNKX)

SAN DIEGO, CALIFORNIA

	[USN]								
ATIS	★ 133.475	352.0							
FOSS TOWER	★								
135.2	298.925								
SOCAL DEP CON									
132.2	269.11 E								

Rwy	Knobs	60	120	180	240	300	360
* 6L/R	V/V(fpm)	570	1040	1550	2080	2600	3120
** 6L/R	V/V(fpm)	280	560	840	1120	1400	1680
*** 6L/R	V/V(fpm)	300	600	900	1200	1500	1800
* 6L/R	V/V(fpm)	880	1360	2040	2720	3400	4080
* 6L/R	V/V(fpm)	353	706	1059	1412	1765	2118
* 6L/R	V/V(fpm)	300	600	900	1200	1500	1800
* 6L/R	V/V(fpm)	220	440	660	880	1100	1320

- * ATC Climb Rate
- ** Military Minimum
- *** Civil Minimum
- Ⓒ to 3000
- Ⓓ to 3900
- Ⓔ 5000 to 7000
- Ⓕ 8000 to 11,000
- Ⓖ to 3600
- Ⓗ 3000 to 5000
- Ⓙ 5000 to 8000



DEPARTURE ROUTE DESCRIPTION

TAKEOFF Rwy 6L/R: Climb via heading 063° to intercept and proceed via MZB VORTAC R-041 to VITKO. Join MZB R-041 at or above 3000. Thence...

ADUDE TRANSITION (VITK03,ADUDE): ... Via MZB R-041 to JIL VORTAC. Then JIL R-070 to ADUDE. Cross FARLO at or above 5000. Cross IDIME at or above 8000. Cross JIL VORTAC at or above 11,000. (To operate in KANE MOA.)

IMPERIAL TRANSITION (VITK03,IPL): ... Via MZB R-041 to JIL VORTAC. Then via JIL R-115 to KUMBA INT, then via IPL VORTAC R-258 to IPL. Cross FARLO at or above 5000. Cross IDIME at or above 8000. Cross JIL VORTAC at or above 11,000.

(CONTINUED ON FOLLOWING PAGE)

VITKO-THREE DEPARTURE (VITK03, VITKO)

Orig 13SEP18

SAN DIEGO, CALIFORNIA
MIRAMAR MCAS (JOE FOSS FLD) (KNKX)

VTIKO-THREE DEPARTURE (VTIKO3, VTIKO)

MIRAMAR MCAS (JOE FOSS FLD) (KNKX)
SAN DIEGO, CALIFORNIA

(USN)

DEPARTURE ROUTE DESCRIPTION

RODEN TRANSITION (VTIKO3, RODEN): ...Arc N of MZB VORTAC via the 13 mile arc to REDIN. Then turn left heading 197° to intercept NKX R-229 at RODEN. Then turn right heading 250 °for entry into W-291. Cross MUNDE at or above 5000. Cross WIPAK at or above 7000.

SANTA CATALINA TRANSITION (VTIKO3, SXC): ...Arc N of MZB VORTAC via the 13 mile arc to REDIN. Then via MZB R-304 to PACIF INT. Then via SXC R-084 to SXC VORTAC. Cross MUNDE at or above 5000. Cross WIPAK at or above 7000.

THERMAL TRANSITION (VTIKO3, TRM): ...Via MZB R-041 to JII VORTAC. Then via JII R-021 to TRM VORTAC. Cross FARLO at or above 5000. Cross IDIME at or above 8000. Cross JII VORTAC at or above 11,000.

NOTE:

- (1) FLETA HOT-ACTIVE FIRING AREA (DANGER, REMAIN CLEAR)
- (2) ALL AIRCRAFT SHOULD MAINTAIN LAST ASSIGNED HEADING/RADIAL AND ALTITUDE TO AVOID INBOUND MILITARY OR CIVIL AIRCRAFT AT HIGHER ALTITUDES!

VTIKO-THREE DEPARTURE (VTIKO3, VTIKO)

Orig 13SEP18

SAN DIEGO, CALIFORNIA
MIRAMAR MCAS (JOE FOSS FLD) (KNKX)