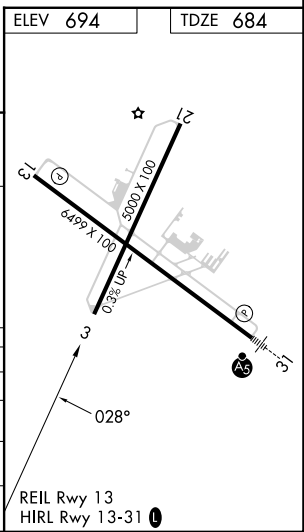
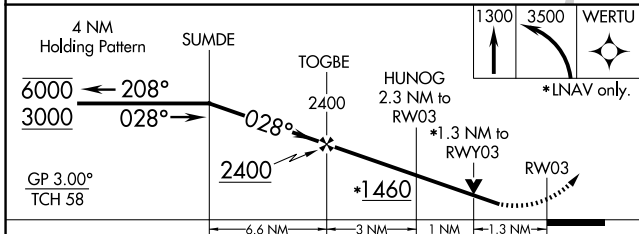
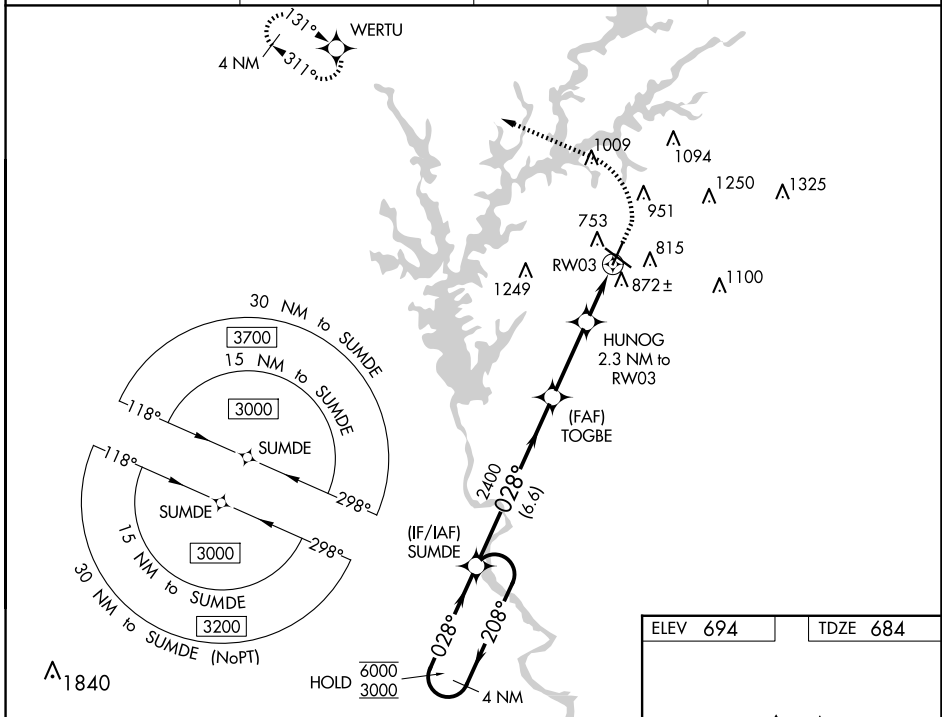


WAAS CH <b>69243</b> <b>W03A</b>	APP CRS <b>028°</b>	Rwy Idg TDZE <b>684</b> Apt Elev <b>694</b>	<b>5000</b>
--	------------------------	---	-------------

# RNAV (GPS) RWY 3

LAGRANGE/CALLAWAY (LGC)

RNP APCH. ⚠ Circling Rwy 13, 21 NA at night. ⚠ Rwy 3 helicopter visibility reduction below 3/4 SM NA. For uncompensated Baro-VNAV systems, LNAV/VNAV NA below -16°C or above 54°C.		MISSED APPROACH: Climb to 1300 then climbing left turn to 3500 direct WERTU and hold, continue climb-in-hold to 3500.	
AWOS-3 <b>126.325</b>	ATLANTA APP CON* <b>125.5 323.1</b>	CLINC DEL <b>119.25</b>	UNICOM <b>122.975</b> (CTAF) <b>📻</b>



CATEGORY	A	B	C	D
LPV DA		1064-1	380 (400-1)	
LNAV/VNAV DA		1044-1	360 (400-1)	
LNAV MDA	1140-1	456 (500-1)	1140-1 3/8	456 (500-1 3/8)
<b>C</b> CIRCLING	1280-1	586 (600-1)	1540-2 1/2 846 (900-2 1/2)	1600-3 906 (1000-3)

SE-4, 19 MAR 2026 to 16 APR 2026

SE-4, 19 MAR 2026 to 16 APR 2026