

24361

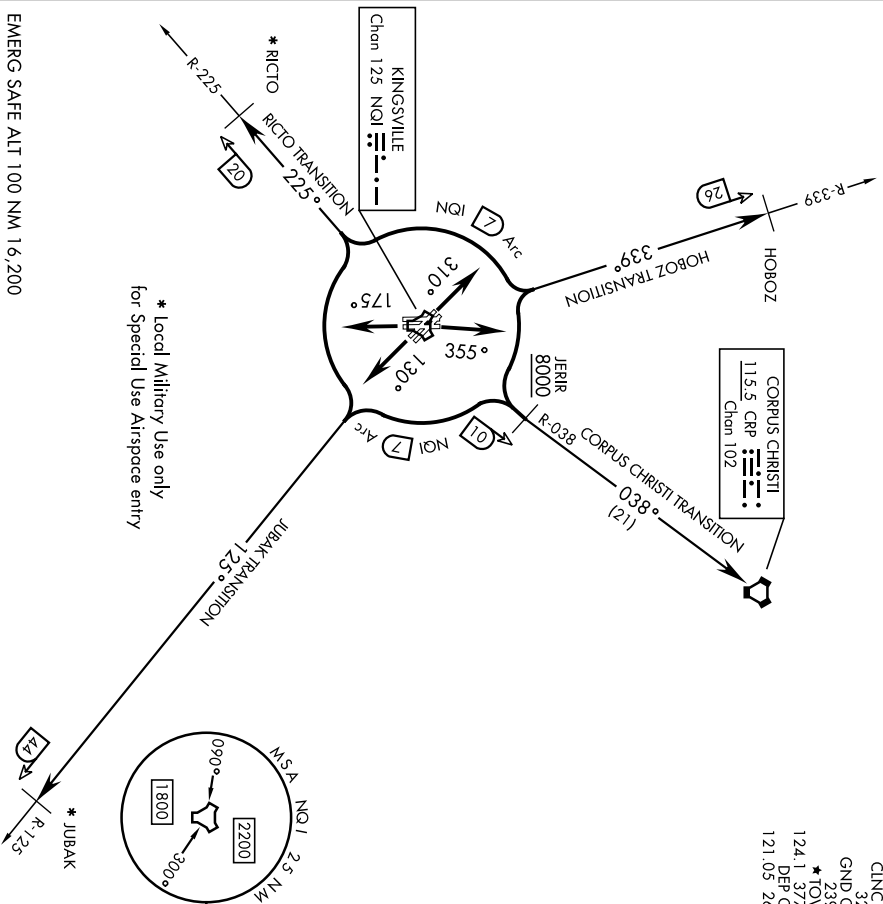
**KINGSVILLE FOUR DEPARTURE (NQ14.NQ1)**

[USN]

**KINGSVILLE NAS (KNQ1)**  
KINGSVILLE, TEXAS

502

ATIS \* 282.25  
CLN 328  
GND CON 239.05  
\* TOWER 124.1 377.05  
DFR CON 121.05 266.8



EMERG SAFE ALT 100 NM 16,200

**DEPARTURE ROUTE DESCRIPTION**

- TAKEOFF RWY 13L/R: Climb via heading 130° to join NQ1 TACAN 7 DME arc, thence...
- TAKEOFF RWY 17L/R: Climb via heading 175° to join NQ1 TACAN 7 DME arc, thence...
- TAKEOFF RWY 31L/R: Climb via heading 310° to join NQ1 TACAN 7 DME arc, thence...
- TAKEOFF RWY 35L/R: Climb via heading 355° to join NQ1 TACAN 7 DME arc, thence...

**CORPUS CHRISTI TRANSITION (NQ14.CRP):**

Rwys 13L/R and 17L/R: ...turn left to intercept NQ1 7 DME arc and arc NE. Turn right to intercept NQ1 R-038 to cross JERIR at or above 8000. Then on NQ1 R-038 to CRP VORTAC. Rwys 31L/R and 35L/R: ...turn right to intercept NQ1 7 DME arc and arc NE. Turn left to intercept NQ1 R-038 to cross JERIR at or above 8000. Then on NQ1 R-038 to CRP VORTAC.

(CONTINUED ON FOLLOWING PAGE)

**KINGSVILLE FOUR DEPARTURE (NQ14.NQ1)**

Orig 26DEC24

KINGSVILLE, TEXAS  
KINGSVILLE NAS (KNQ1)



DEPARTURE ROUTE DESCRIPTION  
(CONTINUED)

HOBOZ TRANSITION (NQ14.HOBOZ):

Rwys 13L/R and 35L/R: ...turn left to intercept NQ1 7 DME arc and arc NW. Turn right to intercept NQ1 R-339 to HOBOZ.

Rwys 17L/R and 31L/R: ...turn right to intercept NQ1 7 DME arc and arc NW. Turn left to intercept NQ1 R-339 to HOBOZ.

JUBAK TRANSITION (NQ14.JUBAK): \*

Rwys 13L/R and 17L/R: ...turn left to intercept NQ1 7 DME arc and arc SE. Turn right to intercept NQ1 R-125 to JUBAK.

Rwys 31L/R and 35L/R: ...turn right to intercept NQ1 7 DME arc and arc SE. Turn left to intercept NQ1 R-125 to JUBAK.

RICTO TRANSITION (NQ14.RICTO): \*

Rwy 13L/R and 17L/R: ...turn right to intercept NQ1 7 DME arc and arc SW. Turn left to intercept NQ1 R-225 to RICTO.

Rwy 31L/R and 35L/R: ...turn left to intercept NQ1 7 DME arc and arc SW. Turn right to intercept NQ1 R-225 to RICTO.

\* RICTO and JUBAK transitions are for local use for Special Use Airspace entry only.

LOST COMMUNICATIONS: If no transmissions are received one minute after departure, climb to assigned altitude, proceed direct assigned NAVAID or intercept NQ1 TACAN 7 DME arc, arc to respective departure radial then via departure radial to assigned departure fix. Then via assigned transition or route. Once established on departure radial climb to filed altitude.