

APP CRS <b>024°</b>	Rwy Ldg TDZE Apt Elev	<b>7615</b> <b>6346</b> <b>6352</b>
------------------------	-----------------------------	---

# RNAV (GPS) RWY 2

RATON MUNI/CREWS FLD (RTN)

RNP APCH-GPS.

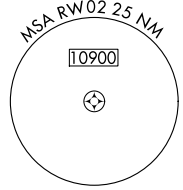
▼ Procedure NA at night.  
Rwy 2 helicopter visibility reduction below 1 SM NA.

MISSED APPROACH: Climbing right turn to 11600 direct WATGU and hold, continue climb-in-hold to 11600.

ASOS  
**118.375**

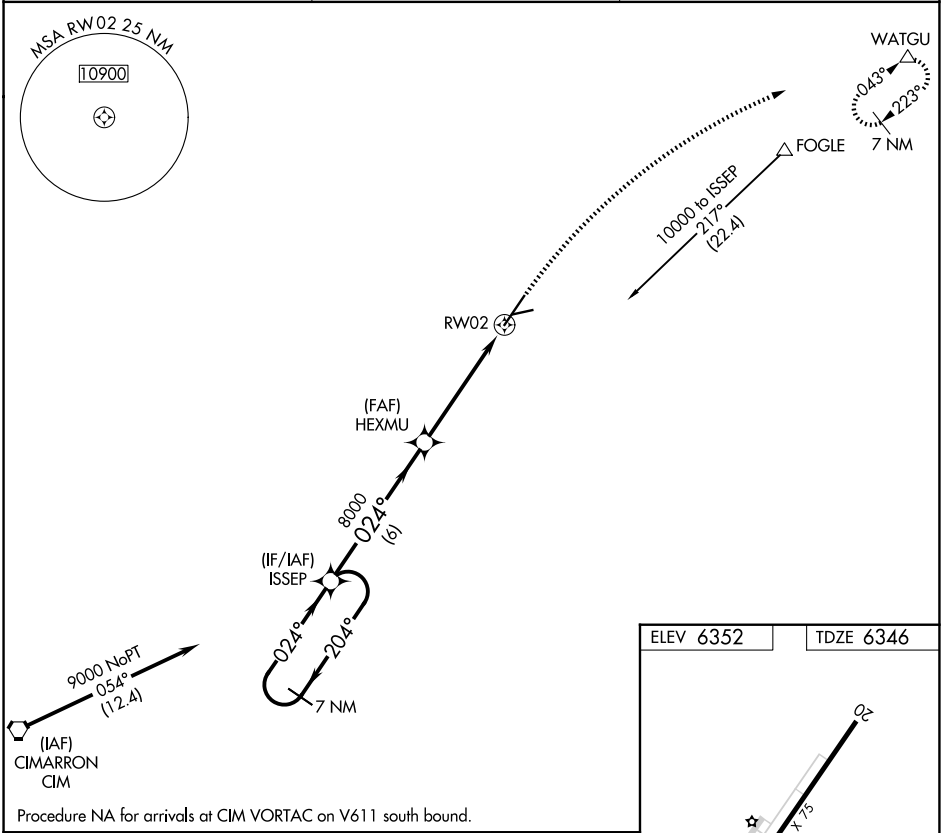
ALBUQUERQUE CENTER  
**132.8 346.35**

UNICOM  
**122.8 (CTAF) 0**

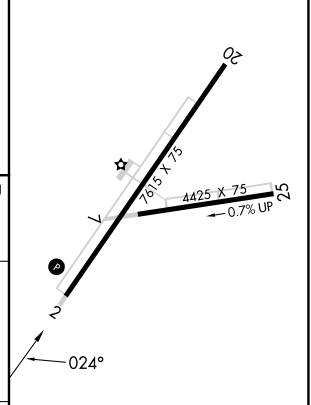


SW-1, 19 MAR 2026 to 16 APR 2026

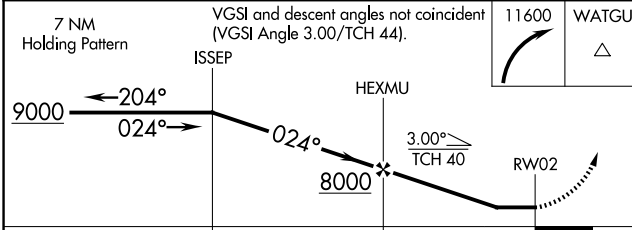
SW-1, 19 MAR 2026 to 16 APR 2026



ELEV 6352	TDZE 6346
-----------	-----------



Procedure NA for arrivals at CIM VORTAC on V611 south bound.



CATEGORY	A	B	C	D
LNAV MDA	7020-1	674 (700-1)	7020-2	674 (700-2)

MIRL Rwy's 2-20 and 7-25 0