

LOC/DME I-CLL 110.55 Chan 42(Y)	APP CRS 166°	Rwy Ldg TDZE 7000 321 Apt Elev 321
--	------------------------	--

LOC BC RWY 17

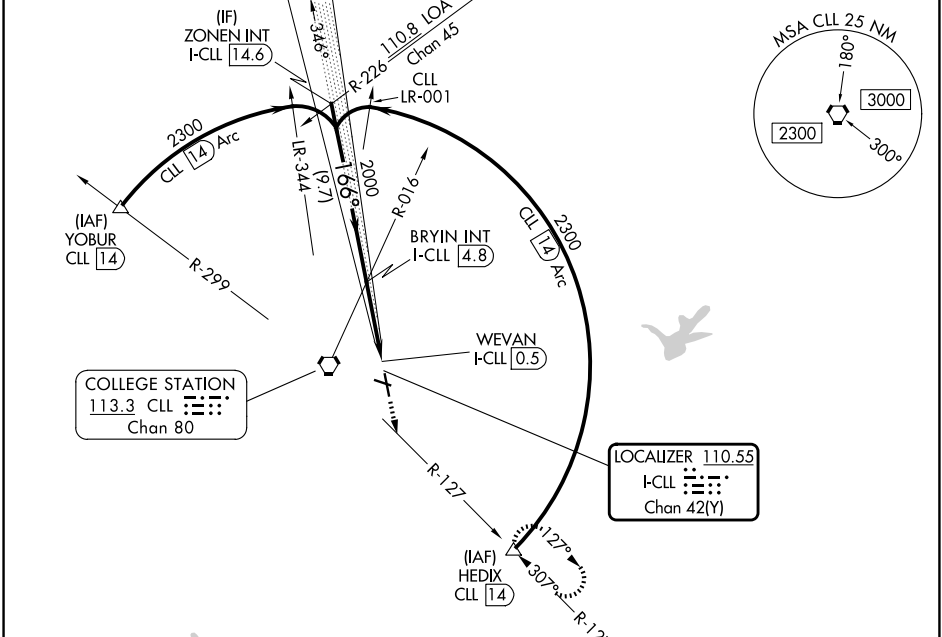
EASTERWOOD FLD (CLL)

DME required.

▼ Rwy 17 helicopter visibility reduction below ¾ SM NA.

▲ MISSED APPROACH: Climb to 2000 on heading 166° and CLL R-127 to HEDIX/CLL 14 DME and hold.

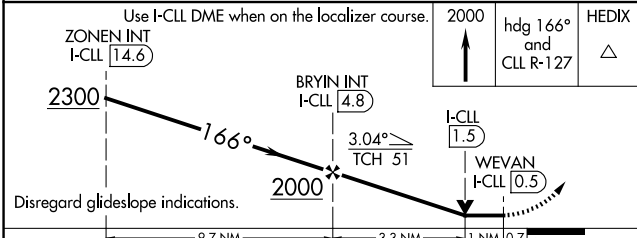
ATIS 126.85	HOUSTON APP CON 134.3 360.85	EASTERWOOD TOWER ★ 118.5 (CTAF) 0 284.7	GND CON 128.7 284.7	UNICOM 122.95
-----------------------	--	---	-------------------------------	-------------------------



SC-5, 19 MAR 2026 to 16 APR 2026

SC-5, 19 MAR 2026 to 16 APR 2026

BACK COURSE



ELEV 321	D	TDZE 321
----------	---	----------

Diagram details: Shows the 166° heading from 2300 ft to 2000 ft. Key points include ZONEN INT I-CLL 14.6, BRYIN INT I-CLL 4.8, WEVAN I-CLL 0.5, and HEDIX. A 3.04° TCH 51 is indicated. Distances are marked as 9.7 NM, 3.3 NM, 1 NM, and 0.7 NM.

REIL Rwy 29	MIRL Rwy 11-29	HIRL Rwy 17-35			
FAF to MAP 4.3 NM					
Knots	60	90	120	150	180
Min:Sec	4:18	2:52	2:09	1:43	1:26