

MORRISTOWN SEVEN DEPARTURE  
(MMU7.MMU) 28FEB19

MORRISTOWN, NEW JERSEY  
MORRISTOWN MUNI (MMTU)

CLNC DEL 128.6  
GND CON 134.2  
MORRISTOWN TOWER ★  
118.1 (CTAF) 353.9  
NEWARK DEP CON  
119.2 379.9

HUGUENOT  
116.1 HUG  
Chan 108

NEION  
COATE  
R-311

SPARTA  
115.7 SAX  
Chan 104

KINGSTON  
117.6 IGN  
Chan 123

CARMEL  
116.6 CMK  
Chan 113

TOP ALTITUDE:  
2000

GREKI

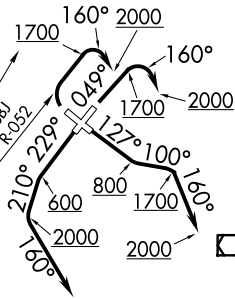
MERIT

BAYYS

BRIDGEPORT  
108.8 BDR  
Chan 25

NEWEL  
R-264  
BWZ  
R-306

BROADWAY  
114.2 BWZ  
Chan 89



ELIOT  
ZIMMZ  
R-250

PARKE

LANNA  
R-274

BIGGY

SOLBERG  
112.9 SBJ  
Chan 76

ELVAE  
R-350

COLTS NECK  
115.4 COL  
Chan 101

DIXIE  
R-192  
R-204  
WHITE

LA GUARDIA  
113.1 LGA  
Chan 78

DEER PARK  
117.7 DPK  
Chan 124



**TAKEOFF MINIMUMS:**

Rwy 5: 300-1½ or standard with minimum climb of 210' per NM to 500, or alternatively, with standard takeoff minimums and normal 200' per NM climb gradient, takeoff must occur no later than 1400' prior to DER.  
Rwy 13: 300-1½ or standard with minimum climb of 230' per NM to 500.  
Rwy 23: 400-2¼ or standard with minimum climb of 475' per NM to 600.  
Rwy 31: 300-1 with minimum climb of 310' per NM to 1500.

NOTE: RADAR Required

NOTE: Chart not to scale

(CONTINUED ON FOLLOWING PAGE)

(MMU7.MMU) 24249  
AL-931 (FAA)  
MORRISTOWN SEVEN DEPARTURE

MORRISTOWN MUNI (MMTU)  
MORRISTOWN, NEW JERSEY

## MORRISTOWN SEVEN DEPARTURE



## DEPARTURE ROUTE DESCRIPTION

TAKEOFF RUNWAY 5: Climb heading 049° to 1700, then climbing right turn heading 160° to 2000, thence...

TAKEOFF RUNWAY 13: Climb heading 127° to 800, then climb heading 100° to 1700, then climb heading 160° to 2000, thence...

TAKEOFF RUNWAY 23: Climb heading 229° to 600, then climb heading 210° to 2000, then turning left heading 160°, thence...

TAKEOFF RUNWAY 31: Climbing right turn on SBJ R-052 to 1700, then climbing right turn heading 160° to 2000, thence...

...as per notes or vectors to assigned route/fix. Expect clearance to filed altitude/flight level ten (10) minutes after departure.

LOST COMMUNICATIONS: For aircraft proceeding to COATE, NEION, HAAYS, GAYEL, BREZY, if radio contact lost/not established with ATC, climb to 3000 feet after crossing SBJ R-047.

NOTE: BAYYS departures will be issued vectors to BDR/BDR R-054.

NOTE: BIGGY departures will be issued vectors to SBJ/SBJ R-237.

NOTE: BREZY departures will be issued vectors to IGN R-217 to BREZY.

NOTE: COATE departures will be issued vectors to SAX/SAX R-311.

NOTE: DIXIE departures will be issued vectors to COL R-350/COL/COL R-192 or ELVAE/COL.

NOTE: ELIOT departures will be issued vectors to SAX R-252. ELIOT may be accessed by all types of aircraft requesting a final altitude of 14000 or 16000.

NOTE: GAYEL departures will be issued vectors to DPK R-320.

NOTE: HAAYS departures will be issued vectors to HUO.

NOTE: LANNA departures will be issued vectors to SBJ/SBJ R-274.

NOTE: MERIT departures will be issued vectors to LGA R-055.

NOTE: NEION departures will be issued vectors to LGA R-322.

NOTE: NEWEL departures will be issued vectors to SAX/SAX R-264. NEWEL may be accessed by jet aircraft only requesting a final altitude at or above flight level 180.

NOTE: Rwy 23 PARKE departures will be issued vectors to BWZ R-250 or SBJ/SBJ R-302.

NOTE: WHITE departures will be issued vectors to COL R-350/COL/COL R-204 or ELVAE/COL.

NOTE: ZIMMZ departures will be issued vectors SBJ/SBJ R-317. ZIMMZ may be accessed by all types of aircraft requesting a final altitude at or above flight level 180.