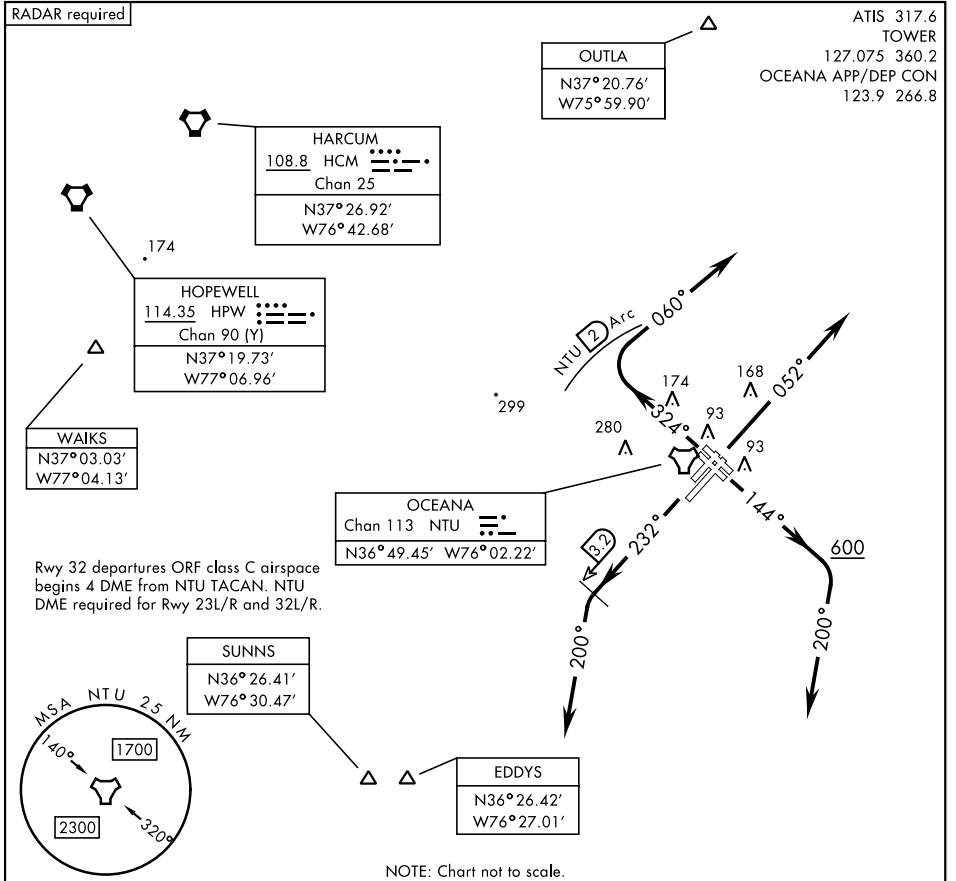


OCEANA SIX DEPARTURE (NTU6.NTU)

OCEANA NAS (APOLLO SOUCEK FLD) (KNTU)

[USN]

VIRGINIA BEACH, VIRGINIA



ATIS 317.6
 TOWER
 127.075 360.2
 OCEANA APP/DEF CON
 123.9 266.8

NE-3, 19 MAR 2026 to 16 APR 2026

NE-3, 19 MAR 2026 to 16 APR 2026

NOTE: Chart not to scale.

DEPARTURE ROUTE DESCRIPTION

TAKEOFF RWY 5L/R: Climb heading 052°. Thence...

TAKEOFF RWY 14L/R: Climb heading 144° to 600 then climbing right turn heading 200°. Thence...

TAKEOFF RWY 23L/R: Climb heading 232°, crossing NTU TACAN 3.2 DME, turn left heading 200°. Thence...

TAKEOFF RWY 32L/R: Climb heading 324° to assigned altitude, turn right heading 060° within NTU TACAN 2 DME. Thence...

...maintain 4000 or assigned lower altitude.

EDDYS TRANSITION (NTU6.EDDYS): Via RADAR vectors to EDDYS.

HARCUM TRANSITION (NTU6.HCM): Via RADAR vectors to HCM VORTAC.

HOPEWELL TRANSITION (NTU6.HPW): Via RADAR vectors to HPW VORTAC.

(At or below 17,000 only).

OUTLA TRANSITION (NTU6.OUTLA): Via RADAR vectors to OUTLA.

SUNNS TRANSITION (NTU6.SUNNS): Via RADAR vectors to SUNNS.

(At or below 17,000 only).

WAIKS TRANSITION (NTU6.WAIKS): Via RADAR vectors to WAIKS.

OCEANA SIX DEPARTURE (NTU6.NTU)

VIRGINIA BEACH, VIRGINIA