

VIRGINIA BEACH, VIRGINIA

# RNAV (GPS) RWY 23L

WAAS CH <b>67300</b> W23A	APCH CRS <b>232°</b>	Rwy ldg TDZE <b>21</b> Arpt Elev <b>22</b>	<b>12,001</b>
---------------------------------	-------------------------	--	---------------

(USN)

OCEANA NAS (APOLLO SOUCEK FLD) (KNTU)

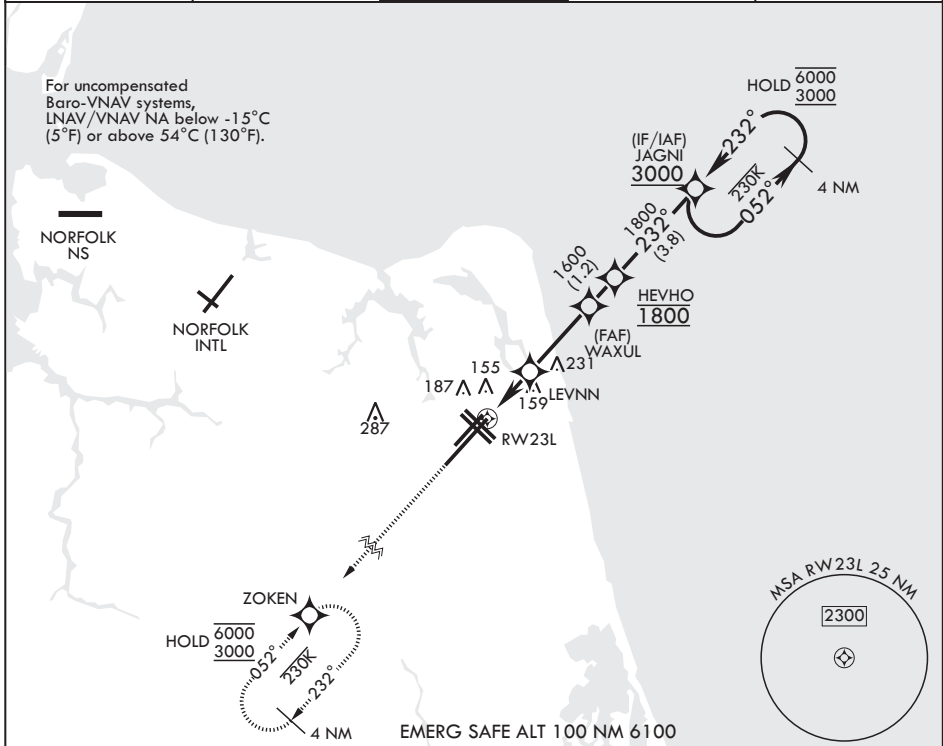
RNP APCH-GPS

▼ \* When ALS inop, increase vis to 3/4 mile.  
 \*\* When ALS inop, increase vis to 7/8 mile.  
 \*\*\* When ALS inop, increase CAT AB vis to 1 mile; CAT CD vis to 1 1/8 miles.



MISSED APPROACH: Climb to 3000 direct ZOKEN and hold.

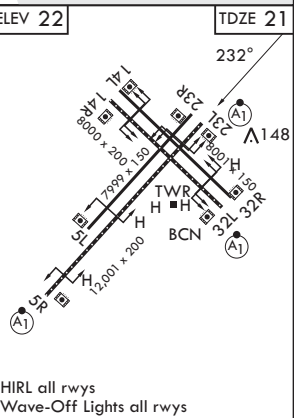
ATIS <b>317.6</b>	APP CON/DEP CON <b>123.9 266.8</b>	TOWER <b>127.075 360.2</b>	GND CON <b>119.6 336.4</b>	ASR/PAR
----------------------	---------------------------------------	-------------------------------	-------------------------------	---------



NE-3, 19 MAR 2026 to 16 APR 2026

NE-3, 19 MAR 2026 to 16 APR 2026

3000	ZOKEN	JAGNI	4 NM Holding Pattern	ELEV 22	TDZE 21
↑		HEVHO 1800	052° → 6000 ← 232° 3000		
RW23L	LEVNN	WAXUL			
1.1 NM to RW23L	700	1600			
2 NM	2.8 NM				
			GP 3.00° TCH 55		
CATEGORY	A	B	C	D	
LPV DA*	221-1/2	200	(200-1/2)		
LNAV/VNAV DA**	324-1/2	303	(400-1/2)		
LNAV MDA***	420-1/2	399 (400-1/2)	420-5/8	399 (400-5/8)	
CIRCLING	500-1	478 (500-1)	600-1 1/2 578 (600-1 1/2)	600-2 578 (600-2)	
					HIRL all rwys Wave-Off Lights all rwys



VIRGINIA BEACH, VIRGINIA

36°49'N - 76°02'W OCEANA NAS (APOLLO SOUCEK FLD) (KNTU)

Amdt 5 12JUN25

# RNAV (GPS) RWY 23L