

RNAV (GPS) RWY 32L/R

APCH CRS 325°	Rwy Idg	32L	32R
	TDZE	8000	8001
	Arprt Elev	22	20

(USN)

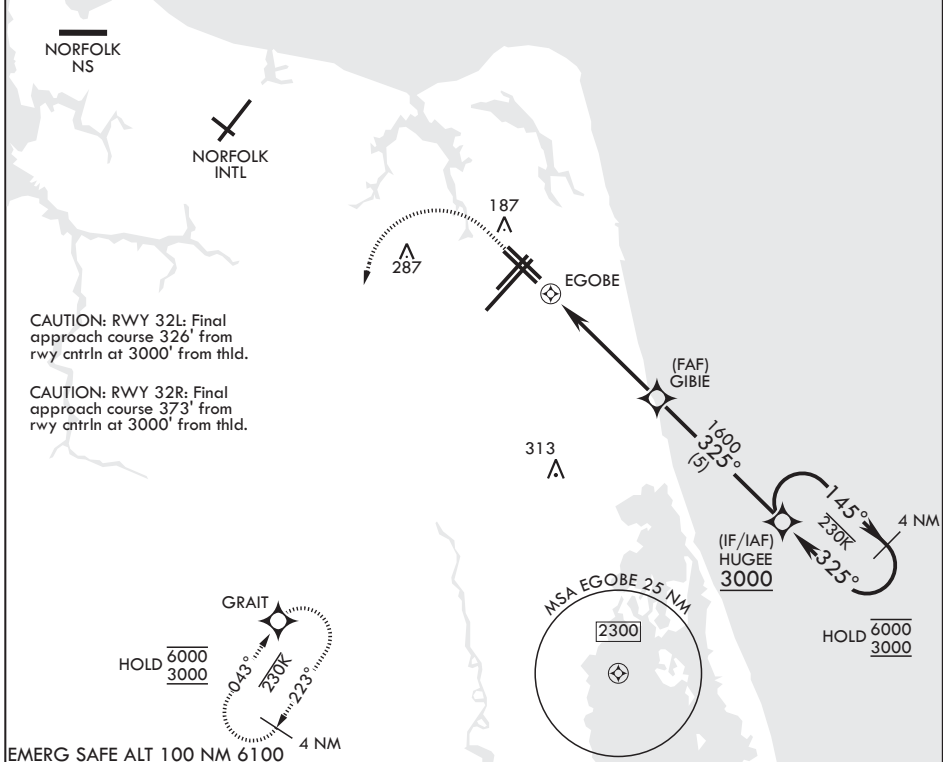
OCEANA NAS (APOLLO SOUCEK FLD) (KNTU)

RNP APCH-GPS
 * When ALS inop increase CAT AB vis to 1 mile, CAT CD vis to 1 1/8 miles.

Rwy 32L
 ALSF-1

MISSED APPROACH: Climb to 1100 then climbing left turn to 3000 direct GRAIT and hold.

ATIS 317.6	APP CON/DEP CON 123.9 266.8	TOWER 127.075 360.2	GND CON 119.6 336.4	ASR/PAR
---------------	--------------------------------	------------------------	------------------------	---------



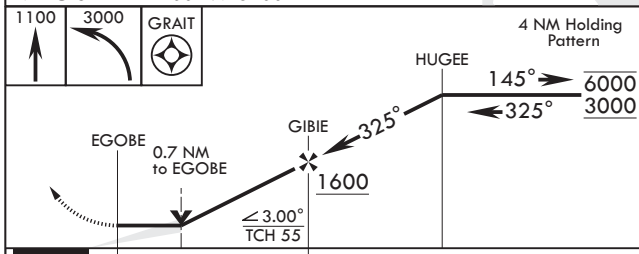
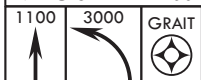
CAUTION: RWY 32L: Final approach course 326' from rwy cntrln at 3000' from thid.

CAUTION: RWY 32R: Final approach course 373' from rwy cntrln at 3000' from thid.

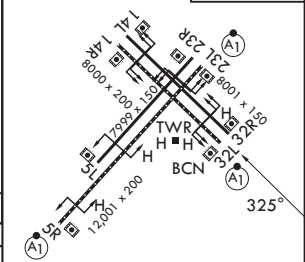
NE-3, 19 MAR 2026 to 16 APR 2026

NE-3, 19 MAR 2026 to 16 APR 2026

EMERG SAFE ALT 100 NM 6100 4 NM



ELEV 22	TDZE 32L 22
	TDZE 32R 20



CATEGORY	A	B	C	D
LNAV MDA 32R	460-1	440 (500-1)	460-1¼	440 (500-1¼)
LNAV MDA 32L*	460-½	438 (500-½)	460-¾	438 (500-¾)
CIRCLING	500-1	478 (500-1)	600-1½ 578 (600-1½)	600-2 578 (600-2)

HIRL all rwys
 Wave-Off Lights all rwys

RNAV (GPS) RWY 32L/R