

VIRGINIA BEACH, VIRGINIA

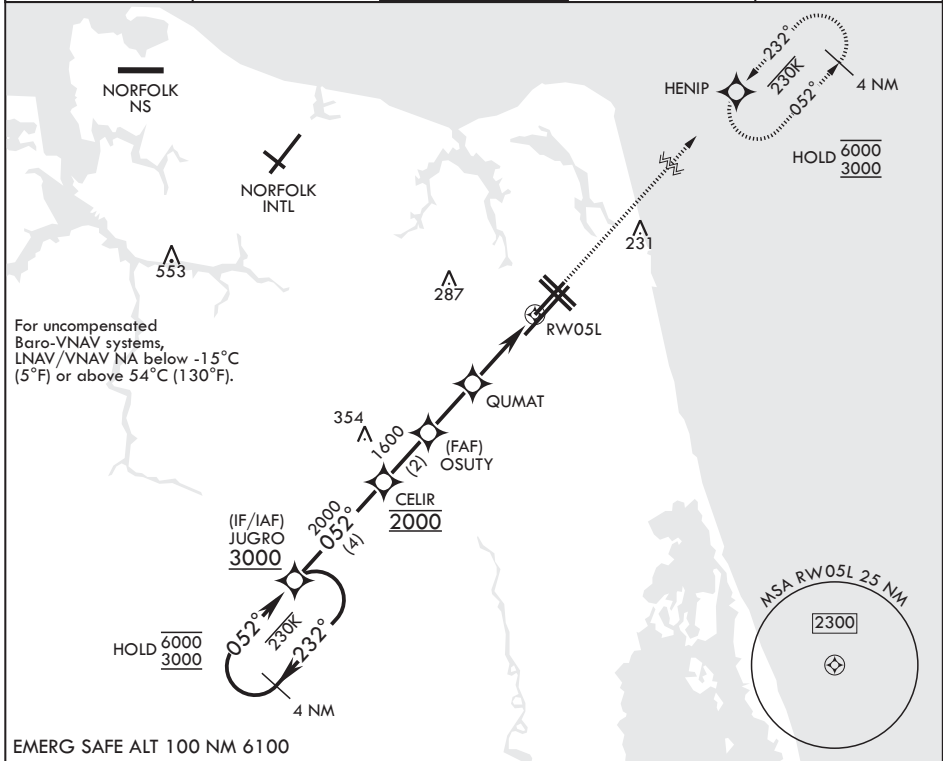
RNAV (GPS) RWY 5L

WAAS CH 63997 W05A	APCH CRS 052°	Rwy ldg TDZE 20 Arpt Elev 22	7999
---------------------------------	-------------------------	--	-------------

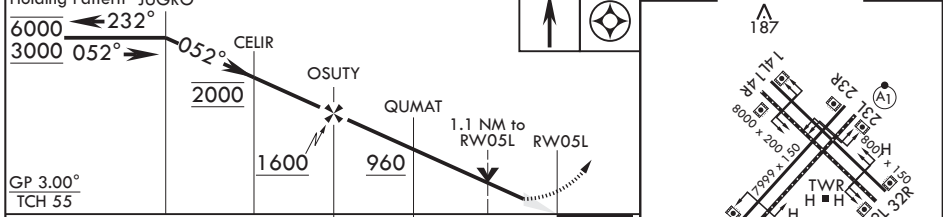
(USN) OCEANA NAS (APOLLO SOUCEK FLD) (KNTU)

RNP APCH-GPS
▽
 MISSED APPROACH: Climb to 3000 direct HENIP and hold.
 Continue climb in hold to 3000.

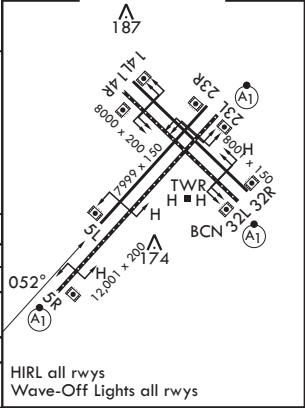
ATIS 317.6	APP CON/DEP CON 123.9 266.8	TOWER 127.075 360.2	GND CON 119.6 336.4	ASR/PAR
----------------------	---------------------------------------	-------------------------------	-------------------------------	---------



EMERG SAFE ALT 100 NM 6100



CATEGORY	A		B		C		D	
LPV DA	220-3/4		200		(200-3/4)			
LNAV/VNAV DA	305-7/8 285 (300-7/8)	316-7/8 296 (300-7/8)	324-7/8 304 (400-7/8)	335-7/8 315 (400-7/8)				
LNAV MDA	440-1	420 (500-1)	440-1 1/2	420 (500-1 1/2)				
CIRCLING	500-1	478 (500-1)	600-1 1/2 578 (600-1 1/2)	600-2 578 (600-2)				



VIRGINIA BEACH, VIRGINIA 36°49'N - 76°02'W OCEANA NAS (APOLLO SOUCEK FLD) (KNTU)

Amdt 5 12JUN25

RNAV (GPS) RWY 5L

NE-3, 19 MAR 2026 to 16 APR 2026

NE-3, 19 MAR 2026 to 16 APR 2026