

VIRGINIA BEACH, VIRGINIA

# TACAN Y RWY 23L/R

TACAN NTU Chan <b>113</b>	APCH CRS <b>244°</b>	Rwy ldg 23L <b>12,001</b> 23R <b>7999</b>
		TDZE 23L <b>21</b> 23R <b>20</b>
		Arpt Elev <b>22</b>

[USN]  
OCEANA NAS (APOLLO SOUCEK FLD) (KNTU)

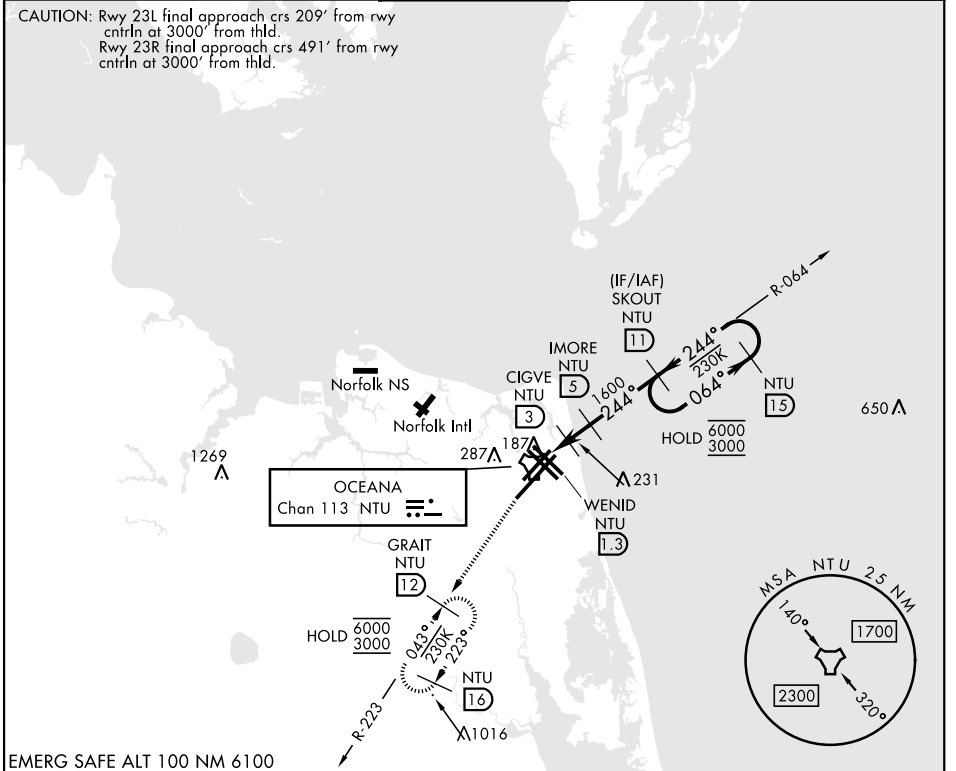
▼ \* When ALS inop, increase CAT AB vis to 1 mile, CAT CD vis to 1½ miles.



MISSED APPROACH: Climb to 3000 via R-064 to NTU TACAN then via R-223 to GRAIT and hold.

ATIS <b>317.6</b>	APP/DEP CON <b>123.9 266.8</b>	TOWER <b>127.075 360.2</b>	GND CON <b>119.6 336.4</b>	ASR/PAR
-------------------	--------------------------------	----------------------------	----------------------------	---------

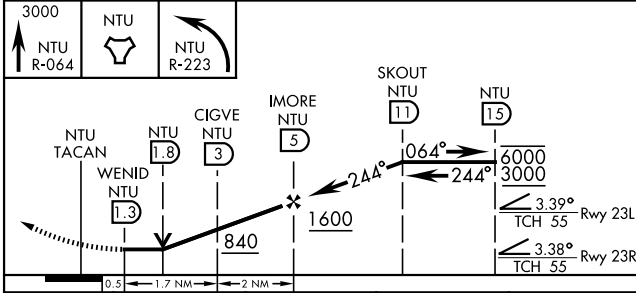
CAUTION: Rwy 23L final approach crs 209° from rwy cntrln at 3000' from thld.  
Rwy 23R final approach crs 491° from rwy cntrln at 3000' from thld.



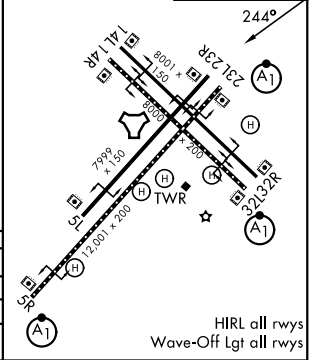
NE-3, 19 MAR 2026 to 16 APR 2026

NE-3, 19 MAR 2026 to 16 APR 2026

EMERG SAFE ALT 100 NM 6100



ELEV <b>22</b>	TDZE 23L <b>21</b> TDZE 23R <b>20</b>
----------------	--



CATEGORY	A	B	C	D
S-23L*	440-½ 419 (500-½)		440-¾ 419 (500-¾)	
S-23R	440-1 420 (500-1)		440-1⅛ 420 (500-1⅛)	
CIRCLING	500-1 478 (500-1)		600-1½ 578 (600-1½)	600-2 578 (600-2)

HIRL all rwys  
Wave-Off Lgt all rwys

VIRGINIA BEACH, VIRGINIA

36° 49' N-76° 02' W

OCEANA NAS (APOLLO SOUCEK FLD) (KNTU)

Amtd 1 12JUN25

# TACAN Y RWY 23L/R