

WYNNS FIVE DEPARTURE (WYNNS5.WYNNS)

OCEANA NAS (APOLLO SOUCEK FLD) (KNTU)

VIRGINIA BEACH, VIRGINIA

ATIS 317.6
 CLNC DEL
 254.4
 GND CON
 119.6 336.4
 TOWER
 127.075 360.2
 DEP CON
 123.9 266.8

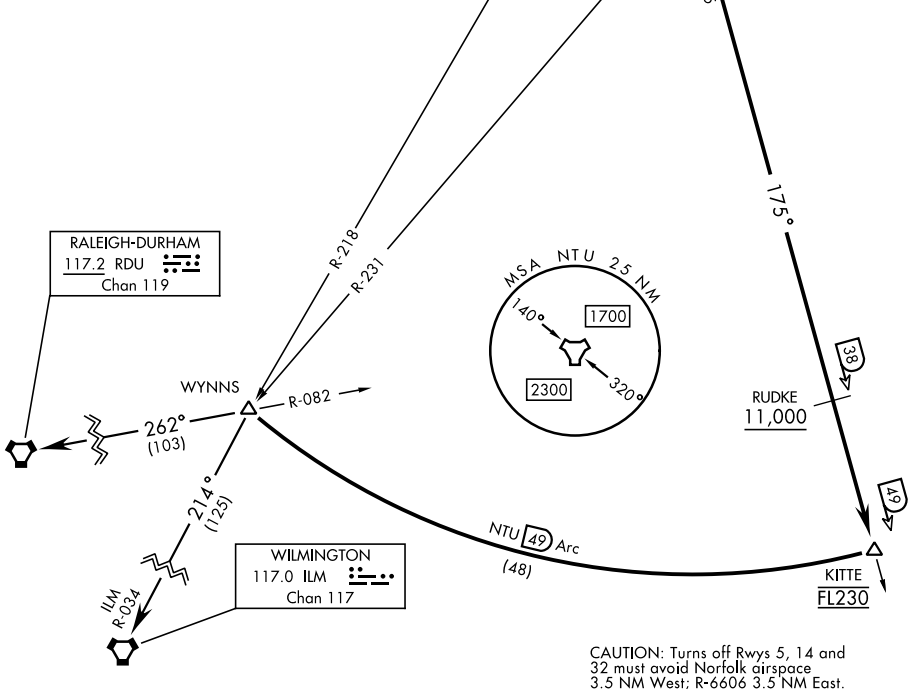
TACAN required [USN]

NORFOLK
 116.9 ORF
 Chan 116

OCEANA
 Chan 113 NTU

Rwy	Knots	60	120	180	240	300	360
All	V/V(fpm)	500	1000	1500	2000	2500	3000

ATC Minimum Climb Rate to FL230



CAUTION: Turns off Rws 5, 14 and 32 must avoid Norfolk airspace 3.5 NM West; R-6606 3.5 NM East.

DEPARTURE ROUTE DESCRIPTION

TAKEOFF RWY 5L/R or 14L/R: Climbing right turn to intercept NTU TACAN R-175 to CANOB. Thence...

TAKEOFF RWY 23L/R: Climbing left turn to intercept NTU TACAN R-175 to CANOB. Thence...

TAKEOFF RWY 32L/R: Climbing left turn within NTU TACAN 2 DME to intercept NTU R-175. Thence...

...via NTU R-175 to KITTE, arc south of NTU via the 49 mile arc to WYNNS. Cross RUDKE at or above 11,000. Cross KITTE at FL230, or as assigned. Thence...

RALEIGH-DURHAM TRANSITION (WYNNS5.RDU): ...via RDU VORTAC R-082 to RDU.

WILMINGTON TRANSITION (WYNNS5.ILM): ...via ILM VORTAC R-034 to ILM.

WYNNS FIVE DEPARTURE (WYNNS5.WYNNS)

VIRGINIA BEACH, VIRGINIA

OCEANA NAS (APOLLO SOUCEK FLD) (KNTU)

NE-3, 19 MAR 2026 to 16 APR 2026

NE-3, 19 MAR 2026 to 16 APR 2026