

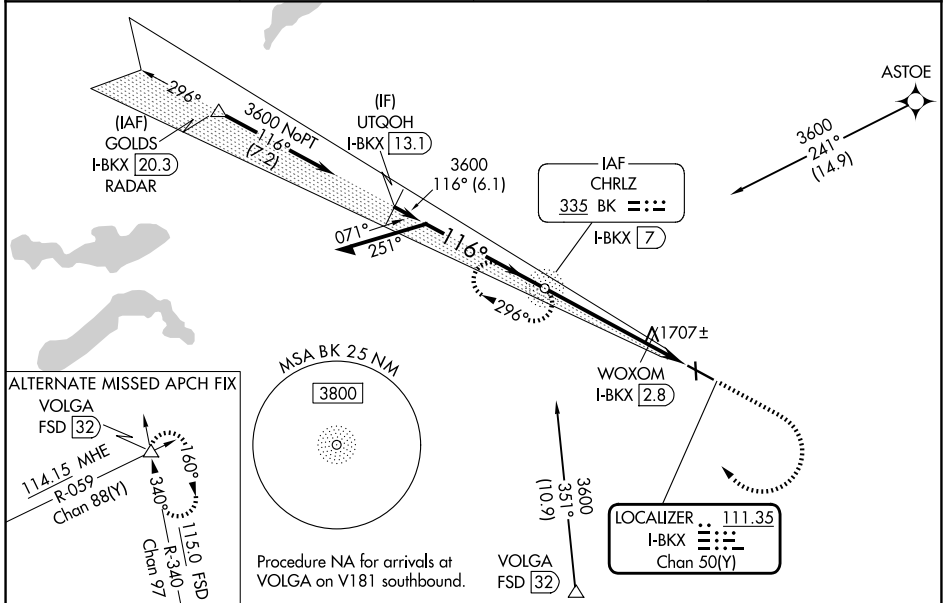
LOC/DME I-BKX <b>111.35</b> Chan <b>50(Y)</b>	APP CRS <b>116°</b>	Rwy Ldg <b>6000</b> TDZE <b>1621</b> Apt Elev <b>1648</b>
---	------------------------	---

# ILS or LOC RWY 12

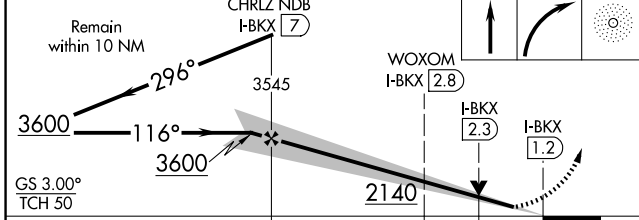
BROOKINGS RGNL (BKX)

DME required. ADF required. From ASTOE: RNAV 1-GPS required.		MALSR 	MISSED APPROACH: Climb to 2100 then climbing right turn to 3600 direct BK NDB and hold, continue climb-in hold to 3600.
NA	Circling Rwy 17 NA at night. VDP NA when using Pipestone Muni altimeter setting. For inop ALS, increase S-LOC 12 Cats C/D visibility to 1 3/8 SM. For inop ALS when using WOXOM fix minimums, increase S-LOC 12 Cat C/D visibility to 1 SM.		

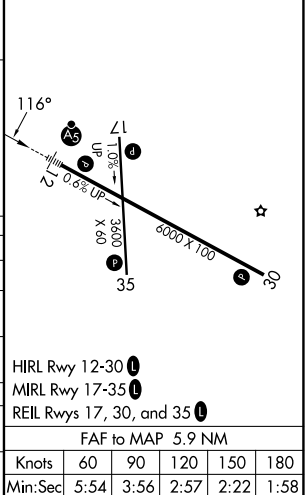
AWOS-3PT <b>119.925</b>	MINNEAPOLIS CENTER <b>132.05 317.4</b>	GCO <b>121.725</b>	UNICOM <b>123.0 (CTAF)</b>
----------------------------	---	-----------------------	-------------------------------



BK CHRLZ NDB I-BKX [7]	2100	3600	BK	ELEV 1648	TDZE 1621
------------------------	------	------	----	-----------	-----------



CATEGORY	A	B	C	D
S-ILS 12		1821-1/2	200 (200-1/2)	
S-LOC 12	2140-1/2	519 (500-1/2)	2140-1	519 (500-1)
CIRCLING	2140-1 492 (500-1)	2160-1 512 (600-1)	2340-2 692 (700-2)	2340-2 1/4 692 (700-2 1/4)
WOXOM FIX MINIMUMS				
S-LOC 12	2000-1/2	379 (400-1/2)	2000-5/8	379 (400-5/8)
CIRCLING	2140-1 492 (500-1)	2160-1 512 (600-1)	2340-2 692 (700-2)	2340-2 1/4 692 (700-2 1/4)



NC-1, 19 MAR 2026 to 16 APR 2026

NC-1, 19 MAR 2026 to 16 APR 2026