

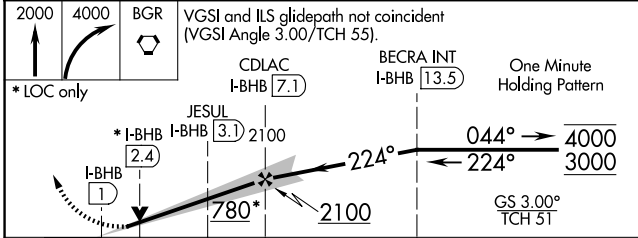
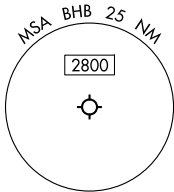
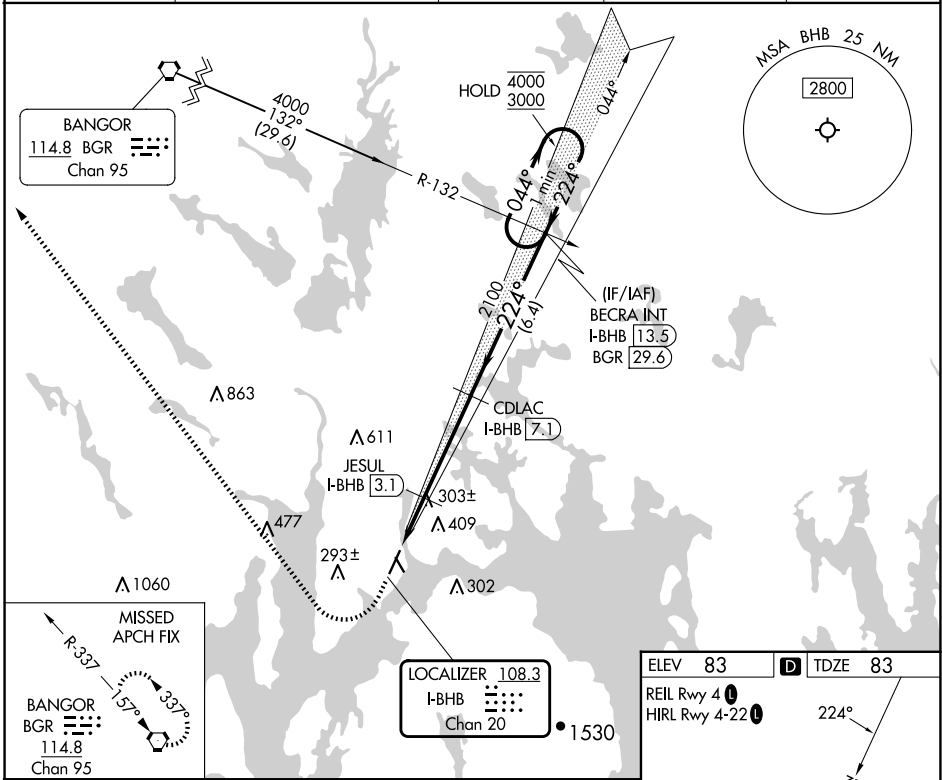
LOC/DME I-BHB <b>108.3</b> Chan <b>20</b>	APP CRS <b>224°</b>	Rwy ldg <b>5200</b> TDZE <b>83</b> Apt Elev <b>83</b>
---	------------------------	---

# ILS or LOC RWY 22

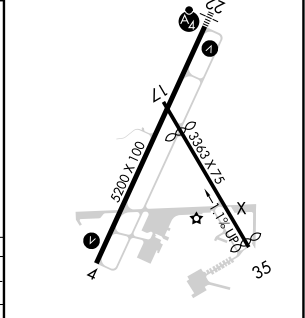
HANCOCK COUNTY/BAR HARBOR (BHB)

DME required.	MALSF	MISSED APPROACH: Climb to 2000 then climbing right turn to 4000 direct BGR VORTAC and hold.
<p>▼ Circling Rwy 17, 35 NA at night.</p> <p>▲ For inop ALS, increase S-LOC Cat C visibility to 1 3/8 SM. Autopilot coupled approach NA below 900 feet MSL.</p>		

AWOS-3PT <b>118.35</b>	BANGOR APP CON <b>133.6 284.65</b>	CLNC DEL <b>119.9</b>	UNICOM <b>123.0</b> (CTAF)	<b>122.7</b> <b>0</b>
---------------------------	---------------------------------------	--------------------------	-------------------------------	-----------------------



ELEV 83	TDZE 83
REIL Rwy 4	HIRL Rwy 4-22



CATEGORY	A	B	C	D
S-ILS 22	283-3/4		200 (200-3/4)	
S-LOC 22	580-3/4 497 (500-3/4)		580-1 1/4 497 (500-1 1/2)	580-1 1/2 497 (500-1 1/2)
CIRCLING	600-1 517 (600-1)	720-1 637 (700-1)	720-1 3/4 637 (700-1 3/4)	840-2 1/2 757 (800-2 1/2)

FAF to MAP 6.1 NM					
Knots	60	90	120	150	180
Min:Sec	6:06	4:04	3:03	2:26	2:02

NE-1, 19 MAR 2026 to 16 APR 2026

NE-1, 19 MAR 2026 to 16 APR 2026