

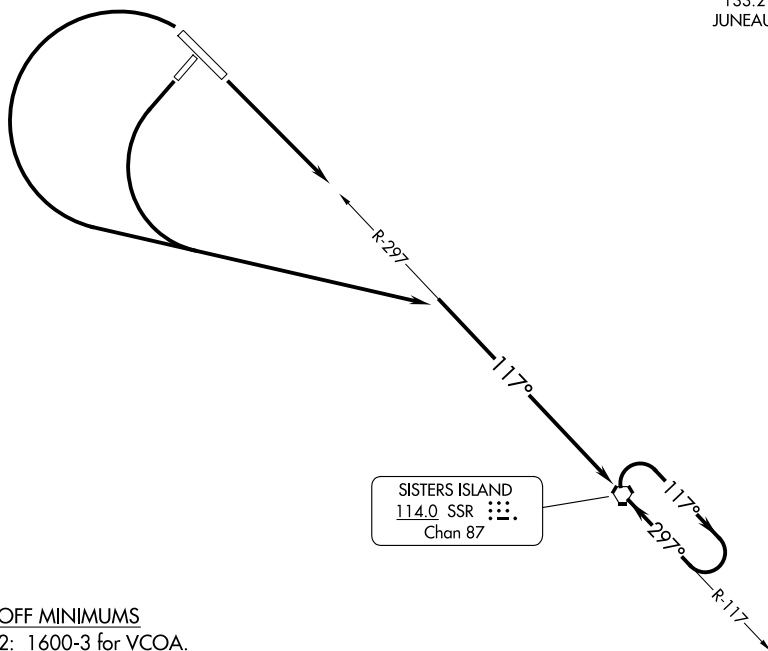
(GSTVS2.SSR) 23334

GUSTAVUS TWO DEPARTURE (OBSTACLE)

AL-1192 (FAA)

GUSTAVUS (GST)(PAGS)
GUSTAVUS, ALASKA

ANCHORAGE CENTER
133.2 360.65
JUNEAU RADIO
122.65



TAKEOFF MINIMUMS

Rwy 2: 1600-3 for VCOA.

Rwy 11: Standard with minimum climb of 230' per NM to 1000 or 1600-3 for VCOA.

Rwy 20: Standard with minimum climb of 215' per NM to 1100 or 1600-3 for VCOA.

Rwy 29: 300-1 $\frac{3}{4}$ or standard with minimum climb of 270' per NM to 300 or 1600-3 for VCOA.

(CONTINUED ON FOLLOWING PAGE)

NOTE: Chart not to scale.

DEPARTURE ROUTE DESCRIPTION

TAKEOFF RUNWAY 2: VCOA.

TAKEOFF RUNWAY 11: Climb to at or above 4000 to intercept SSR R-297 to SSR VORTAC.

TAKEOFF RUNWAY 20: Climbing left turn to at or above 4000 to intercept SSR R-297 to SSR VORTAC.

TAKEOFF RUNWAY 29: Climbing left turn to at or above 4000 to intercept SSR R-297 to SSR VORTAC.

VCOA ALL RUNWAYS: Obtain ATC approval for VCOA when requesting IFR clearance. Climb in visual conditions to cross GUSTAVUS airport southeast bound at or above 1500, continue climb to at or above 4000 on SSR R-297 to SSR VORTAC.

GUSTAVUS TWO DEPARTURE (OBSTACLE)

(GSTVS2.SSR) 07OCT21

GUSTAVUS, ALASKA
GUSTAVUS (GST)(PAGS)

AK, 19 MAR 2026 to 14 MAY 2026

AK, 19 MAR 2026 to 14 MAY 2026

TAKEOFF OBSTACLE NOTES

Rwy 11: Tree, nav aids, vegetation beginning 2' from DER, 64' right of centerline, up to 11' AGL/36' MSL.
 Navaid 10' from DER, 54' left of centerline, 2' AGL/30' MSL.
 Navaid, tree beginning 10' from DER, 148' left of centerline, up to 6' AGL/33' MSL.
 Tree 118' from DER, 329' left of centerline. 12' AGL/38' MSL.
 Trees beginning 154' from DER, 520' right of centerline, up to 18' AGL/43' MSL.
 Tree 329' from DER, 355' left of centerline, 15' AGL/41' MSL.
 Tree 441' from DER, 371' left of centerline, 20' AGL/43' MSL.
 Tree 644' from DER, 575' left of centerline, 43' AGL/65' MSL.
 Trees beginning 691' from DER, 496' right of centerline, up to 90' AGL/115' MSL.
 Tree 906' from DER, 587' left of centerline, 103' AGL/129' MSL.
 Trees beginning 917' from DER, 531' right of centerline, up to 105' AGL/130' MSL.
 Trees beginning 922' from DER, 609' left of centerline, up to 111' AGL/136' MSL.
 Trees beginning 1173' from DER, 550' left of centerline, up to 114' AGL/140' MSL.
 Trees beginning 1349' from DER, 561' left of centerline, up to 116' AGL/141' MSL.
 Tree 1448' from DER, 779' right of centerline, 113' AGL/136' MSL.
 Trees beginning 1555' from DER, 247' right of centerline, up to 126' AGL/151' MSL.
 Trees beginning 2044' from DER, 334' left of centerline, up to 128' AGL/152' MSL.
 Trees beginning 2164' from DER, 311' left of centerline, up to 133' AGL/157' MSL.
 Trees beginning 2210' from DER, 63' right of centerline, up to 131' AGL/154' MSL.
 Trees beginning 2298' from DER, 153' left of centerline, up to 141' AGL/166' MSL.

Rwy 20: Vegetation 2' from DER, 130' left of centerline, 2' AGL/31' MSL.
 Vegetation 2' from DER, 199' right of centerline, 3' AGL/31' MSL.
 Vegetation 44' from DER, 198' right of centerline, 4' AGL/32' MSL.
 Trees, vegetation, fence beginning 51' from DER, 129' right of centerline, up to 86' AGL/113' MSL.
 Fence 68' from DER, 350' left of centerline, 7' AGL/35' MSL.
 Trees beginning 152' from DER, 210' left of centerline, up to 92' AGL/120' MSL.
 Trees beginning 621' from DER, 197' right of centerline, up to 93' AGL/121' MSL.
 Trees beginning 917' from DER, 288' left of centerline, up to 99' AGL/127' MSL.
 Trees beginning 984' from DER, 197' left of centerline, up to 101' AGL/130' MSL.
 Trees beginning 1041' from DER, 267' right of centerline, up to 94' AGL/122' MSL.
 Trees beginning 1079' from DER, 261' right of centerline, up to 100' AGL/127' MSL.
 Trees beginning 1100' from DER, 261' left of centerline, up to 106' AGL/133' MSL.
 Trees beginning 1159' from DER, 2' left of centerline, up to 121' AGL/148' MSL.
 Trees beginning 1592' from DER, 462' right of centerline, up to 112' AGL/141' MSL.
 Trees beginning 1691' from DER, 35' right of centerline, up to 114' AGL/142' MSL.
 Trees beginning 2141' from DER, 9' right of centerline, up to 121' AGL/148' MSL.
 Trees beginning 2596' from DER, 688' right of centerline, up to 129' AGL/155' MSL.
 Trees beginning 2758' from DER, 23' right of centerline, up to 144' AGL/169' MSL.
 Trees beginning 3516' from DER, 308' left of centerline, up to 124' AGL/149' MSL.
 Trees beginning 3703' from DER, 90' left of centerline, up to 130' AGL/155' MSL.
 Tree 5387' from DER, 1409' right of centerline, 147' AGL/172' MSL.

(CONTINUED ON FOLLOWING PAGE)

AK, 19 MAR 2026 to 14 MAY 2026

AK, 19 MAR 2026 to 14 MAY 2026

(CONTINUED)

TAKEOFF OBSTACLE NOTES

Rwy 29: Vegetation 1' from DER, 457' left of centerline, 4' AGL/37' MSL.

Navajds beginning 9' from DER, 54' right of centerline, up to 2' AGL/38' MSL.

Navajds beginning 9' from DER, 64' left of centerline, up to 2' AGL/38' MSL.

Navaid 10' from DER, 152' left of centerline, 5' AGL/40' MSL.

Navaid, vegetation beginning 10' from DER, 140' right of centerline, up to 5' AGL/40' MSL.

Tree 139' from DER, 312' right of centerline, 6' AGL/42' MSL.

Tree 177' from DER, 385' left of centerline, 16' AGL/49' MSL.

Tree 263' from DER, 473' left of centerline, 18' AGL/51' MSL.

Trees beginning 354' from DER, 360' left of centerline, up to 30' AGL/63' MSL.

Trees beginning 650' from DER, 368' left of centerline, up to 35' AGL/68' MSL.

Tree 923' from DER, 631' right of centerline, 78' AGL/111' MSL.

Tree 946' from DER, 396' right of centerline, 88' AGL/121' MSL.

Trees beginning 1054' from DER, 280' right of centerline, up to 95' AGL/130' MSL.

Trees beginning 1117' from DER, 167' left of centerline, up to 68' AGL/101' MSL.

Trees beginning 1146' from DER, 147' right of centerline, up to 97' AGL/133' MSL.

Trees beginning 1318' from DER, 430' left of centerline, up to 82' AGL/116' MSL.

Trees beginning 1400' from DER, 486' left of centerline, up to 87' AGL/121' MSL.

Trees beginning 1493' from DER, 145' right of centerline, up to 103' AGL/139' MSL.

Tree 1896' from DER, 994' left of centerline, 90' AGL/124' MSL.

Trees beginning 1930' from DER, 118' left of centerline, up to 121' AGL/156' MSL.

Trees beginning 2220' from DER, 117' left of centerline, up to 134' AGL/169' MSL.

Trees beginning 2383' from DER, 165' right of centerline, up to 108' AGL/144' MSL.

Trees beginning 2680' from DER, 431' left of centerline, up to 135' AGL/170' MSL.

Trees beginning 2835' from DER, 207' left of centerline, up to 139' AGL/174' MSL.

Trees beginning 3552' from DER, 352' right of centerline, up to 121' AGL/158' MSL.

Trees beginning 4183' from DER, 1024' left of centerline, up to 140' AGL/176' MSL.

Trees beginning 4474' from DER, 1071' left of centerline, up to 141' AGL/177' MSL.

Trees beginning 4741' from DER, 127' left of centerline, up to 159' AGL/195' MSL.

Tree 5082' from DER, 24' right of centerline, 133' AGL/171' MSL.

Trees beginning 5326' from DER, 188' right of centerline, up to 142' AGL/181' MSL.

Trees beginning 5350' from DER, 21' left of centerline, up to 169' AGL/204' MSL.

Trees beginning 5448' from DER, 86' right of centerline, up to 148' AGL/186' MSL.

Trees beginning 5551' from DER, 14' left of centerline, up to 175' AGL/210' MSL.

Trees beginning 5668' from DER, 39' right of centerline, up to 151' AGL/188' MSL.

Trees beginning 5760' from DER, 3' right of centerline, up to 153' AGL/ 191' MSL.

Trees beginning 5844' from DER, 85' right of centerline, up to 156' AGL/193' MSL.

Trees beginning 5893' from DER, 64' right of centerline, up to 157' AGL/195' MSL.

Trees beginning 1 NM from DER, 87' right of centerline, up to 174' AGL/212' MSL.

(CONTINUED ON FOLLOWING PAGE)

AK, 19 MAR 2026 to 14 MAY 2026

AK, 19 MAR 2026 to 14 MAY 2026

(CONTINUED)

TAKEOFF OBSTACLE NOTES

- Rwy 2: Vegetation beginning 6' from DER, 135' left of centerline, up to 6' AGL/35' MSL.
- Vegetation 11' from DER, 262' right of centerline, 4' AGL/33' MSL.
- Vegetation 32' from DER, 129' right of centerline, 3' AGL/35' MSL.
- Vegetation, trees beginning 56' from DER, 178' right of centerline, up to 8' AGL/39' MSL.
- Vegetation beginning 99' from DER, 173' left of centerline, up to 6' AGL/37' MSL.
- Vegetation 112' from DER, 451' left of centerline, 7' AGL/38' MSL.
- Tree 703' from DER, 164' right of centerline, 22' AGL/51' MSL.
- Tree 1014' from DER, 747' right of centerline, 35' AGL/63' MSL.
- Tree 1088' from DER, 314' left of centerline, 44' AGL/70' MSL.
- Trees beginning 1089' from DER, 199' right of centerline, up to 67' AGL/99' MSL.
- Tree 1118' from DER, 233' left of centerline, 67' AGL/99' MSL.
- Tree 1140' from DER, 184' left of centerline, 70' AGL/101' MSL.
- Tree 1142' from DER, 399' left of centerline, 86' AGL/121' MSL.
- Trees beginning 1157' from DER, 364' right of centerline, up to 107' AGL/140' MSL.
- Trees beginning 1214' from DER, 13' right of centerline, up to 113' AGL/145' MSL.
- Trees beginning 1222' from DER, 177' left of centerline, up to 105' AGL/140' MSL.
- Tree 1339' from DER, 517' left of centerline, 110' AGL/142' MSL.
- Trees beginning 1350' from DER, 13' left of centerline, up to 114' AGL/147' MSL.
- Trees beginning 2872' from DER, 83' left of centerline, up to 115' AGL/149' MSL.
- Trees beginning 3954' from DER, 78' right of centerline, up to 114' AGL/146' MSL.
- Trees beginning 4206' from DER, 1324' left of centerline, up to 122' AGL/157' MSL.
- Tree 1.9 NM from DER, 382' right of centerline, 158' AGL/365' MSL.
- Trees beginning 1.9 NM from DER, 410' left of centerline, up to 136' AGL/369' MSL.
- Tree 2 NM from DER, 810' right of centerline, 154' AGL/366' MSL.
- Trees beginning 2 NM from DER, 57' right of centerline, up to 173' AGL/411' MSL.
- Tree 2 NM from DER, 2653' left of centerline, 59' AGL/386' MSL.
- Tree 2 NM from DER, 2050' left of centerline, 121' AGL/413' MSL.
- Tree 2 NM from DER, 3311' left of centerline, 128' AGL/447' MSL.
- Trees beginning 2.1 NM from DER, 39' left of centerline, up to 128' AGL/473' MSL.
- Tree 2.1 NM from DER, 2107' right of centerline, 147' AGL/420' MSL.
- Trees beginning 2.1 NM from DER, 846' right of centerline, up to 146' AGL/423' MSL.
- Trees beginning 2.2 NM from DER, 2437' left of centerline, up to 86' AGL/529' MSL.
- Tree 2.2 NM from DER, 472' right of centerline, 137' AGL/447' MSL.
- Tree 2.2 NM from DER, 3161' right of centerline, 120' AGL/462' MSL.
- Trees beginning 2.2 NM from DER, 2054' left of centerline, up to 144' AGL/589' MSL.
- Trees beginning 2.2 NM from DER, 1069' right of centerline, up to 101' AGL/477' MSL.
- Trees beginning 2.3 NM from DER, 1251' left of centerline, up to 153' AGL/633' MSL.
- Trees beginning 2.3 NM from DER, 670' right of centerline, up to 92' AGL/531' MSL.
- Trees beginning 2.3 NM from DER, 98' left of centerline, up to 94' AGL/642' MSL.
- Trees beginning 2.3 NM from DER, 1340' right of centerline, up to 119' AGL/591' MSL.
- Tree 2.4 NM from DER, 2405' left of centerline, 111' AGL/744' MSL.
- Trees beginning 2.4 NM from DER, 146' right of centerline, up to 193' AGL/683' MSL.
- Trees beginning 2.4 NM from DER, 1354' left of centerline, up to 171' AGL/851' MSL.
- Trees beginning 2.4 NM from DER, 404' left of centerline, up to 189' AGL/919' MSL.
- Tree 2.4 NM from DER, 1934' right of centerline, 135' AGL/780' MSL.
- Tree 2.4 NM from DER, 2671' right of centerline, up to 133' AGL/781' MSL.
- Trees beginning 2.5 NM from DER, 796' right of centerline, up to 171' AGL/953' MSL.
- Tree 2.5 NM from DER, 2715' right of centerline, 155' AGL/962' MSL.
- Tree 2.5 NM from DER, 2236' right of centerline, 153' AGL/967' MSL.
- Trees beginning 2.5 NM from DER, 151' right of centerline, up to 161' AGL/977' MSL.

AK, 19 MAR 2026 to 14 MAY 2026

AK, 19 MAR 2026 to 14 MAY 2026