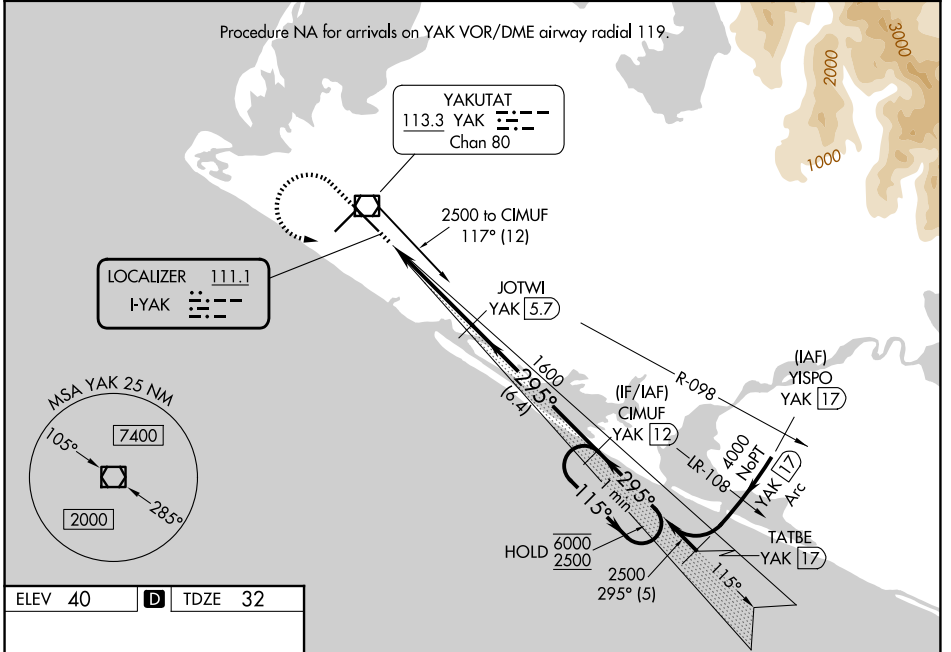


LOC I-YAK 111.1	APP CRS 295°	Rwy Ldg 7732 TDZE 32 Apt Elev 40
---------------------------	------------------------	---

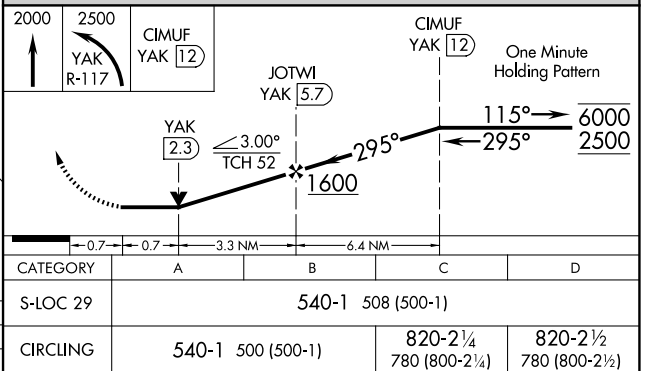
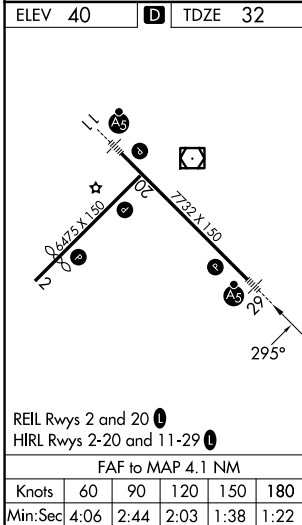
LOC BC RWY 29 YAKUTAT (YAK) (PAYA)

DME required.	MALS R	MISSED APPROACH: Climb to 2000 then climbing left turn to 2500 on YAK VOR/DME R-117 to CIMUF/ YAK 12 DME and hold.
<p>⚠ Circling Rwy 20 NA at night. Rwy 29 helicopter visibility reduction below 3/4 SM NA. Inop table does not apply to S-LOC 29 Cats A and B. When Yakutat altimeter setting not received, procedure NA. For inop ALS, increase S-LOC 29 Cats C and D visibility to 1 3/8 SM. DME from YAK VOR/DME. DME use requires simultaneous reception of I-YAK and YAK DME.</p>		

ASOS 135.75	ANCHORAGE CENTER 119.0 263.1	JUNEAU RADIO 123.6 (CTAF) 0
-----------------------	--	---------------------------------------



BACK COURSE



AK, 19 MAR 2026 to 14 MAY 2026

AK, 19 MAR 2026 to 14 MAY 2026