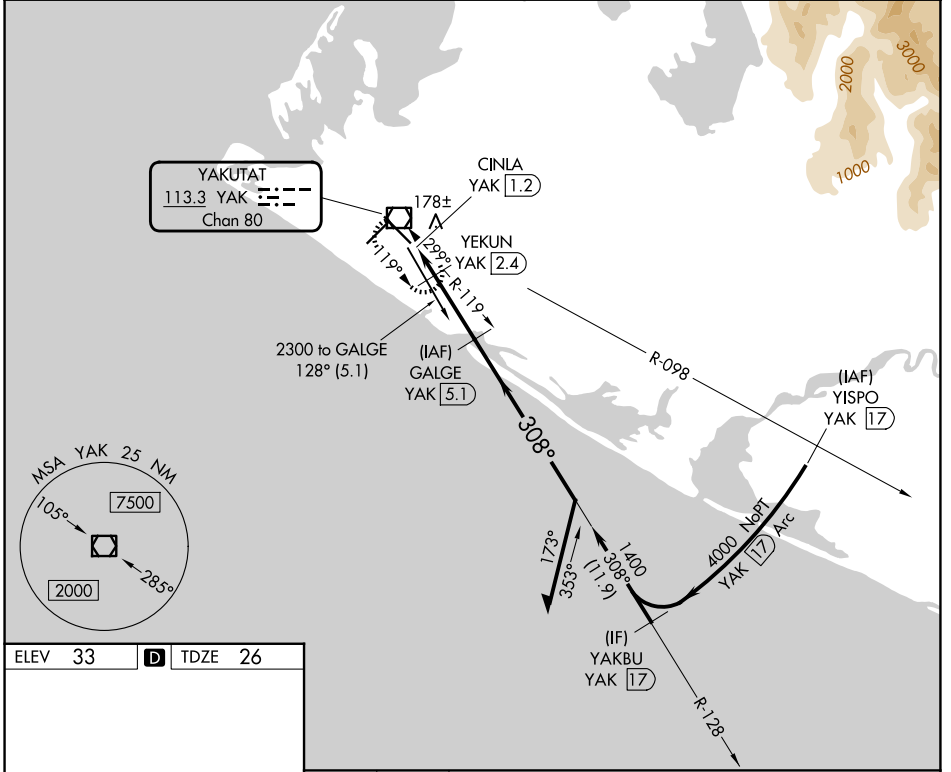


VOR/DME YAK <b>113.3</b> Chan <b>80</b>	APP CRS <b>308°</b>	Rwy Ldg <b>7732</b> TDZE <b>26</b> Apt Elev <b>33</b>
---	------------------------	---

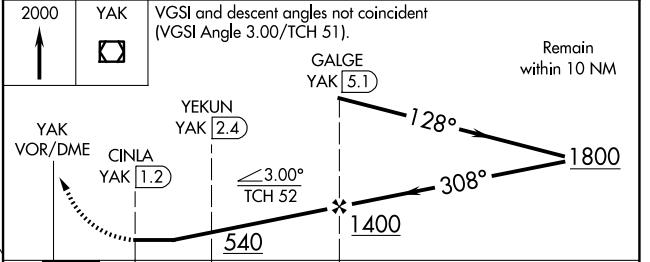
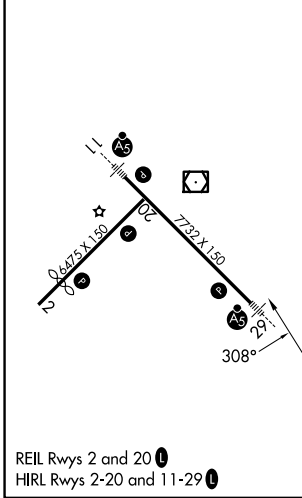
# VOR/DME RWY 29 YAKUTAT (YAK) (PAYA)

<b>▽</b> <b>▲</b>	Inop table does not apply to Cats A/B. For inop MALSR, increase Cats C/D visibility to 1½ mile.	MALSR 	MISSED APPROACH: Climb to 2000 direct YAK VOR/DME and hold, continue climb-in-hold to 2000.
----------------------	--	-----------	--

ASOS <b>135.75</b>	ANCHORAGE CENTER <b>119.0 263.1</b>	JUNEAU RADIO <b>123.6 (CTAF) 0</b>
-----------------------	--	---------------------------------------



ELEV 33	<b>D</b>	TDZE 26
---------	----------	---------



CATEGORY	A	B	C	D
S-29	440-1 414 (500-1)			
CIRCLING	500-1 467 (500-1)	520-1 487 (500-1)	620-1½ 587 (600-1½)	720-2¼ 687 (700-2¼)

AK, 19 MAR 2026 to 14 MAY 2026

AK, 19 MAR 2026 to 14 MAY 2026