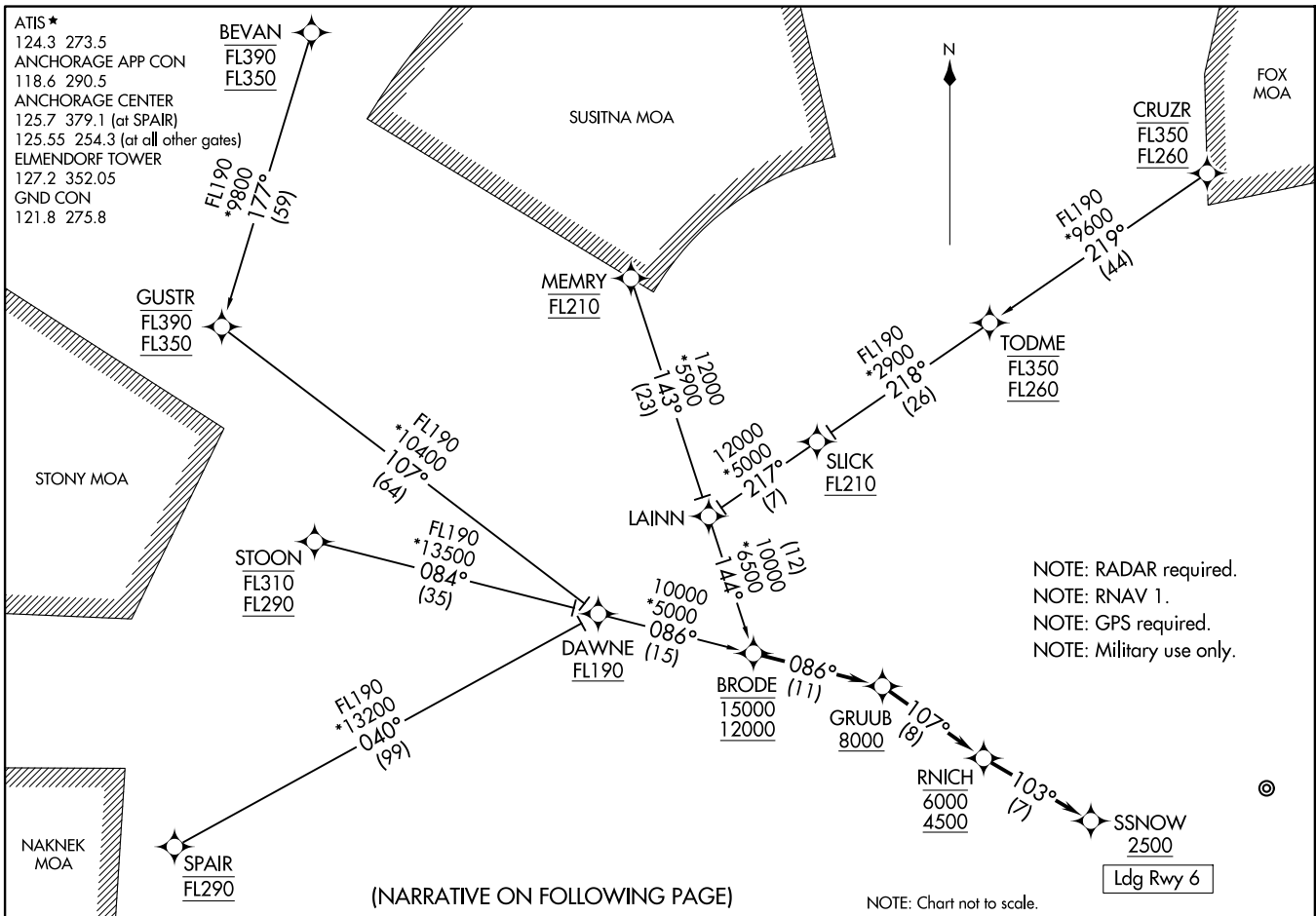


(BRODE:GRUUB1) 19115
GRUB ONE ARRIVAL (RNAV)

AL-1196 (FAA)

ELMENDORF ARB (PAEDD)
ANCHORAGE, ALASKA



GRUB ONE ARRIVAL (RNAV)
(BRODE:GRUUB1) 08NOV18

ANCHORAGE, ALASKA
ELMENDORF ARB (PAEDD)

(NARRATIVE ON FOLLOWING PAGE)

NOTE: RADAR required.
NOTE: RNAV 1.
NOTE: GPS required.
NOTE: Military use only.

NOTE: Chart not to scale.

ARRIVAL ROUTE DESCRIPTION

BEVAN TRANSITION (BEVAN.GRUUB1)

CRUZR TRANSITION (CRUZR.GRUUB1)

GUSTR TRANSITION (GUSTR.GRUUB1)

MEMRY TRANSITION (MEMRY.GRUUB1)

SPAIR TRANSITION (SPAIR.GRUUB1)

STOON TRANSITION (STOON.GRUUB1)

From BRODE on track 086° to cross GRUUB at or above 8000.

LANDING RUNWAY 6: From GRUUB on track 107° to cross RNICH between 4500 and 6000, then on track 103° to cross SSNOW at or above 2500. Expect ILS Z or LOC/DME RWY 6 approach.

AK, 19 MAR 2026 to 14 MAY 2026

AK, 19 MAR 2026 to 14 MAY 2026