

LOC/DME I-OME 108.7 Chan 24	APP CRS 099°	Rwy Ldg TDZE Apt Elev 6009 16 38
---	------------------------	--

LOC/DME BC RWY 10

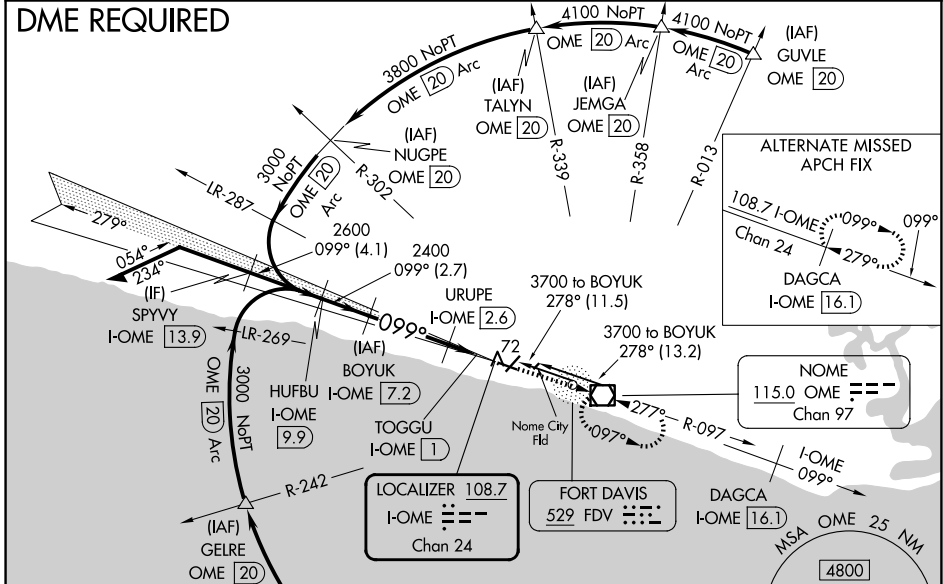
NOME (OME) (PAOM)

LOC BC unusable inside TOGGU/I-OME 1 DME. Night landing:
Rwy 10 operational VGSi required, remain on or above VGSi glidepath until threshold. Night landing: Rwy 21 NA. Circling NA for Cats C and D north of Rwy 10-28.

MISSED APPROACH: Climb to 3000 direct OME VOR/DME and hold, continue climb-in-hold to 3000.

AFIS 119.925	ANCHORAGE CENTER 133.3 290.4	NOME RADIO 123.6 (CTAF) ①
------------------------	--	--

DME REQUIRED



BACK COURSE

ELEV 38	D	TDZE 16
---------	----------	---------

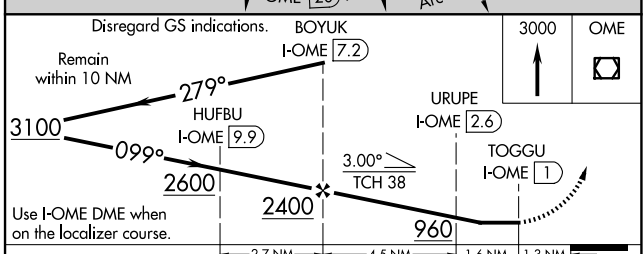
099°

6009 X 150

6176 X 150

UR

28



CATEGORY	A	B	C	D
S-10		340-1½	324 (400-1½)	
CIRCLING		540-1½	502 (600-1½)	700-2 662 (700-2)

MIRL Rwy 3-21 **①**
HIRL Rwy 10-28 **①**
REIL Rwy 3 and 10 **①**

AK, 19 MAR 2026 to 14 MAY 2026

AK, 19 MAR 2026 to 14 MAY 2026