

NOME, ALASKA

AL-1231 (FAA)

25275

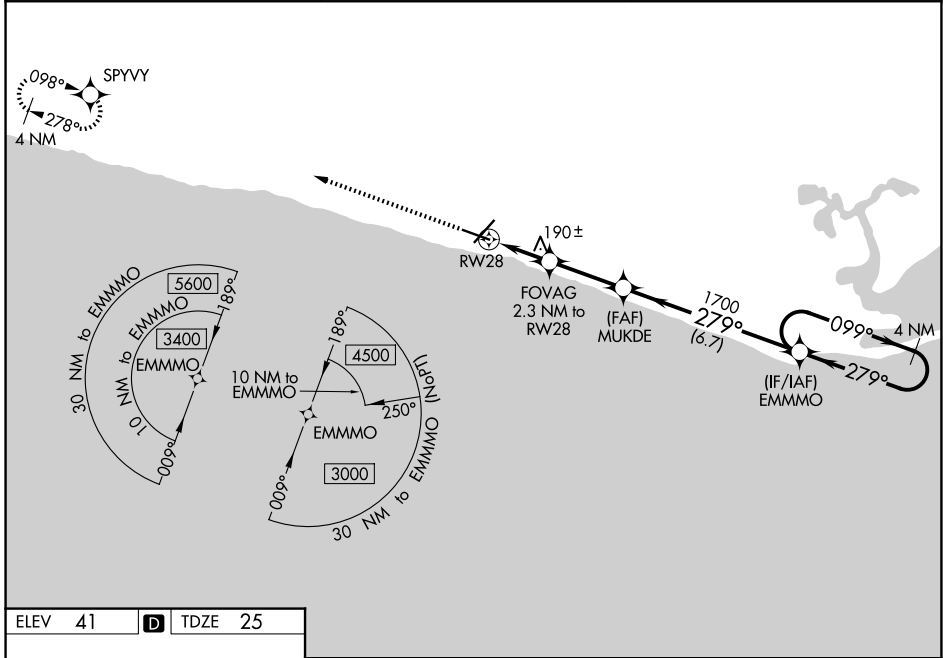
WAAS CH <b>45927</b> <b>W28A</b>	APP CRS <b>279°</b>	Rwy Ldg TDZE <b>25</b> Apt Elev <b>41</b>
--	------------------------	---

# RNAV (GPS) RWY 28

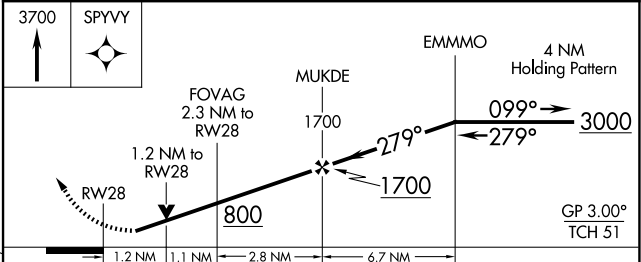
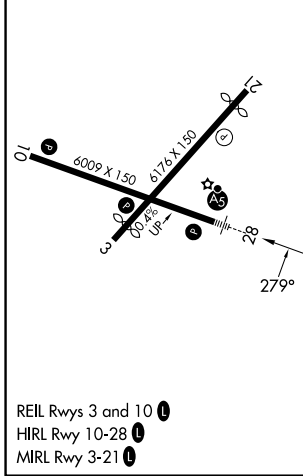
NOME (OME)(PAOM)

RNP APCH - GPS. ▼ Inop table does not apply to LPV 28 all Cats. For uncompensated Baro-VNAV systems, LNAV/VNAV NA below -18°C or above 54°C. Circling NA for Cats C and D north of Rwy 10-28. NA. Rwy 28 helicopter visibility reduction below 4000 NA. Circling Rwy 21 NA at night.	MALSRL 	MISSED APPROACH: Climb to 3700 direct SPYVY and hold, continue climb-in-hold to 3700.
---	------------	---

AFIS <b>119.925</b>	ANCHORAGE CENTER <b>133.3 290.4</b>	NOME RADIO <b>123.6 (CTAF) 1</b>
------------------------	--	-------------------------------------



ELEV 41	<b>D</b>	TDZE 25
---------	----------	---------



	A	B	C	D
LPV DA		275/40	250 (300-¾)	
LNAV/VNAV DA		301/40	276 (300-¾)	
LNAV MDA		440/40	415 (400-¾)	
CIRCLING	540-1	499 (500-1)	540-1½ 499 (500-1½)	700-2 659 (700-2)

NOME, ALASKA  
 Amdt 2A 21MAR24

64°31'N-165°27'W

# RNAV (GPS) RWY 28

AK, 19 MAR 2026 to 14 MAY 2026

AK, 19 MAR 2026 to 14 MAY 2026