

VOR/DME OME <b>115.0</b> Chan 97	APP CRS <b>276°</b>	Rwy Ldg <b>6009</b> TDZE <b>25</b> Apt Elev <b>41</b>
--	------------------------	---

# VOR RWY 28

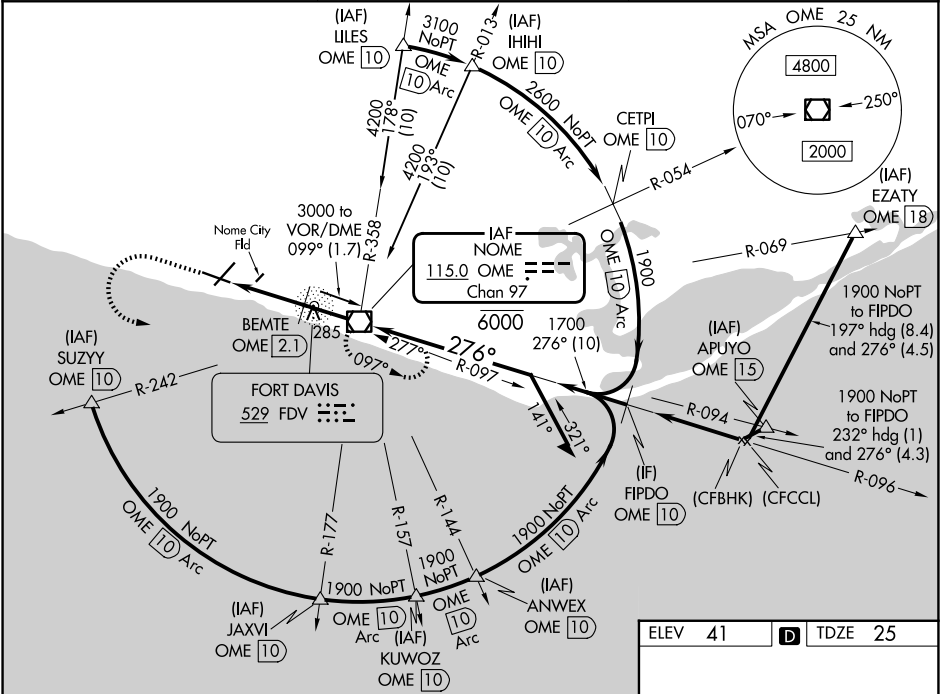
NOME (OME)(PAOM)

**⚠** For inop ALS, increase S-28 BEMTE fix minimums Cat A/B visibility to RVR 5000, increase Cat C/D visibility to 1 3/8 SM. Circling NA for Cots C and D north of Rwy 10-28. Circling Rwy 21 NA at night. Rwy 28 helicopter visibility reduction below RVR 4000 NA.



**MISSED APPROACH:** Climb to 1200 then climbing left turn to 3000 direct OME VOR/DME and hold, continue climb-in-hold to 3000.

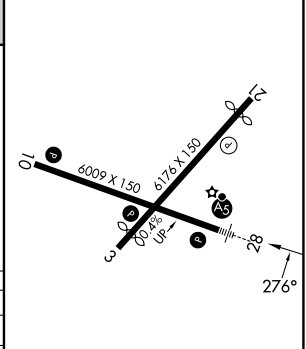
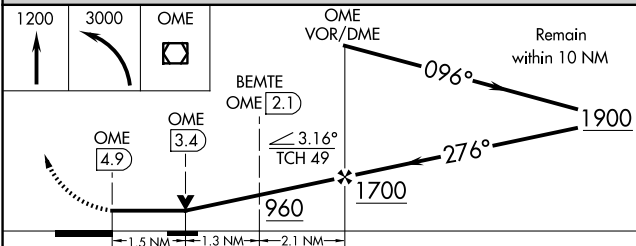
AFIS <b>119.925</b>	ANCHORAGE CENTER <b>133.3 290.4</b>	NOME RADIO <b>123.6 (CTAF) 0</b>
------------------------	--	-------------------------------------



AK, 19 MAR 2026 to 14 MAY 2026

AK, 19 MAR 2026 to 14 MAY 2026

ELEV 41	<b>D</b> TDZE 25
---------	------------------



CATEGORY	A	B	C	D
S-28	960/40	935 (1000-3/4)	960-2	935 (1000-2)
CIRCLING	960-1 1/4	919 (1000-1 1/4)	960-2 3/4	960-3
			919 (1000-2 3/4)	919 (1000-3)
BEMTE FIX MINIMUMS				
S-28	540/40	515 (500-3/4)	540/55	515 (500-1)
CIRCLING	540-1	499 (500-1)	540-1 1/2	700-2
			499 (500-1 1/2)	659 (700-2)

REIL Rwys 3 and 10	<b>0</b>
HIRL Rwy 10-28	<b>0</b>
MIRL Rwy 3-21	<b>0</b>
FAF to MAP 4.9 NM	
Knots	60 90 120 150 180
Min:Sec	4:54 3:16 2:27 1:58 1:38