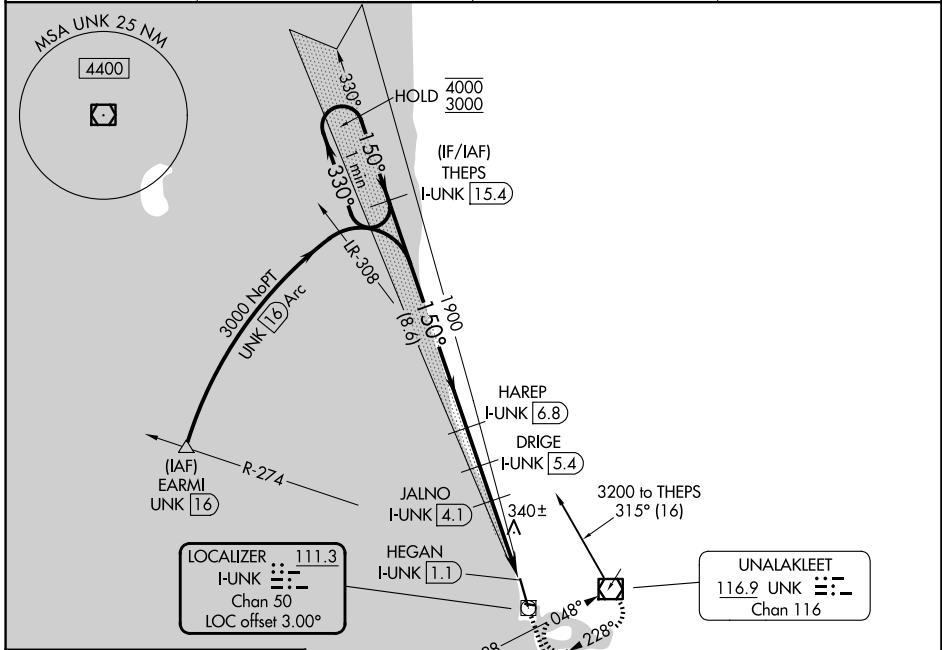


LOC/DME I-UNK 111.3 Chan 50	APP CRS 150°	Rwy Ldg TDZE Apt Elev	5900 27 27
--	------------------------	-----------------------------	---------------------------------------

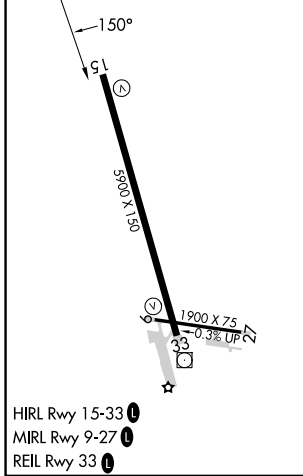
LOC RWY 15

UNALAKLEET (UNK)(PAUN)

DME required.		MISSED APPROACH: Climb to 1900 then climbing right turn to 3400 direct UNK VOR/DME and hold, continue climb-in-hold to 3400.	
AWOS-3P 132.25	ANCHORAGE CENTER 135.7 335.5	NOME RADIO 122.3	CTAF 123.0



ELEV	27	TDZE	27
------	----	------	----



- HIRL Rwy 15-33
- MIRL Rwy 9-27
- REIL Rwy 33

	THEPS I-UNK 15.4	HAREP I-UNK 6.8	DRIGE I-UNK 5.4	JALNO I-UNK 4.1	I-UNK 2.5	HEGAN I-UNK 1.1
One Minute Holding Pattern	4000 ← 330°	3000 → 150°	1900 → 150°	1440 → 3.01° TCH 39	1020 → 1.3 NM	3400 → 1.6 NM
	8.6 NM	1.4 NM	1.3 NM	1.6 NM	1.4 NM	
CATEGORY	A	B	C	D		
S-LOC 15	520-1	493 (500-1)	520-1 3/8	493 (500-1 3/8)		
CIRCLING	600-1 573 (600-1)	700-1 673 (700-1)	700-2 673 (700-2)	900-2 3/4 873 (900-2 3/4)		

Procedure NA for arrivals at UNK VOR/DME on V440 eastbound.

AK, 19 MAR 2026 to 14 MAY 2026

AK, 19 MAR 2026 to 14 MAY 2026