

MILTON, FLORIDA

ILS Y or LOC Y RWY 32

LOC/DME I-NDZ 110.55 Chan 42(Y)	APCH CRS 319°	Rwy Idg TDZE 172 Arprt Elev 177	6002
---	-------------------------	---	-------------

[USN]

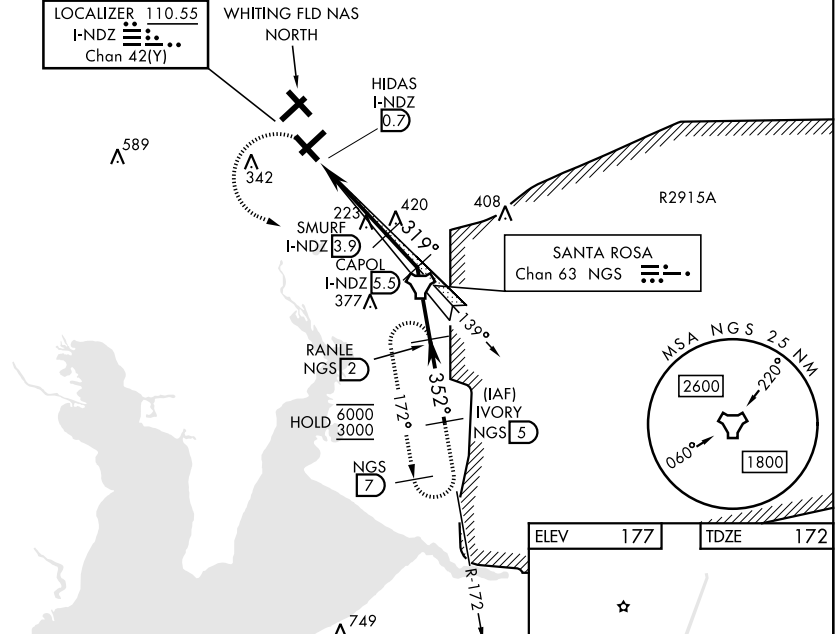
WHITING FLD NAS - SOUTH (KNDZ)

TACAN, DME, RADAR required.		MALSR 	MISSED APPROACH: Climb to 700, then climbing left turn to 3000 direct RANLE, continue climb in hold. Contact Pensacola Approach Control.	
*When ALS inop, increase vis to 3/4 mile. **When ALS inop, increase vis to 1 mile. *** Circling not authorized N of Rwy 14 and 23.				

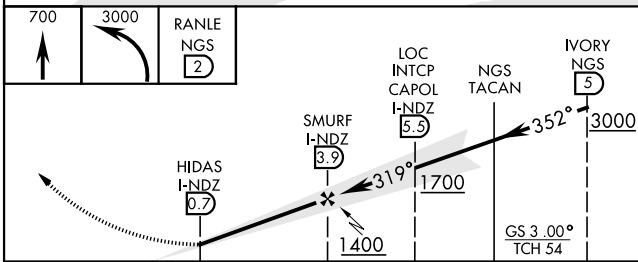
ATIS 273.575	PENSACOLA APP CON 124.85 235.775	SOUTH WHITING TOWER 123.075 348.675	GND CON 317.65	CLNC DEL 355.6	ASR/ PAR
------------------------	--	---	--------------------------	--------------------------	-------------

- CAUTION: 1. Intensive VFR student training all quadrants.
 2. Whiting FLD NAS - NORTH located 1 NM N.
 3. Inlmed seg len 1.7 NM less than minimum 2.2 NM.

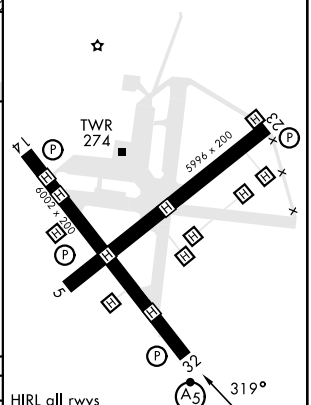
LOCALIZER **110.55**
I-NDZ
Chan **42(Y)**



EMERG SAFE ALT 100 NM 3500



ELEV 177	TDZE 172
----------	----------



CATEGORY	A	B	C	D
S-ILS 32*		372-1/2	200 (200-1/2)	
S-LOC 32**	520-1/2	348 (400-1/2)	520-5/8 348 (400-5/8)	
CIRCLING***	580-1	640-1	660-1/2	760-2
	403 (500-1)	463 (500-1)	483 (500-1 1/2)	583 (600-2)

FAF to MAP 3.2 NM					
Knots	60	90	120	150	180
Min:Sec	3:12	2:08	1:36	1:17	1:04

MILTON, FLORIDA

30°42'N-87°01'W

WHITING FLD NAS - SOUTH (KNDZ)

Amdt 1 10JUL25

ILS Y or LOC Y RWY 32

SE-3, 19 MAR 2026 to 16 APR 2026

SE-3, 19 MAR 2026 to 16 APR 2026