

# HI-TACAN X RWY 06L

TACAN UAM Chan <b>54</b>	APCH CRS <b>065°</b>	Rwy Idg <b>10,527</b> TDZE <b>539</b> Arpt Elev <b>617</b>
-----------------------------	-------------------------	--

[USAF]

ANDERSEN AFB (PGUA)

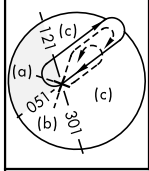
RADAR or DME required

\* When ALS inop, increase CAT AB RVR to 55, vis to 1 mile; CAT CDE vis to 1½ miles.  
\*\* Circling not authorized NW of Rwy 06L-24R.

SALS  
(A2)

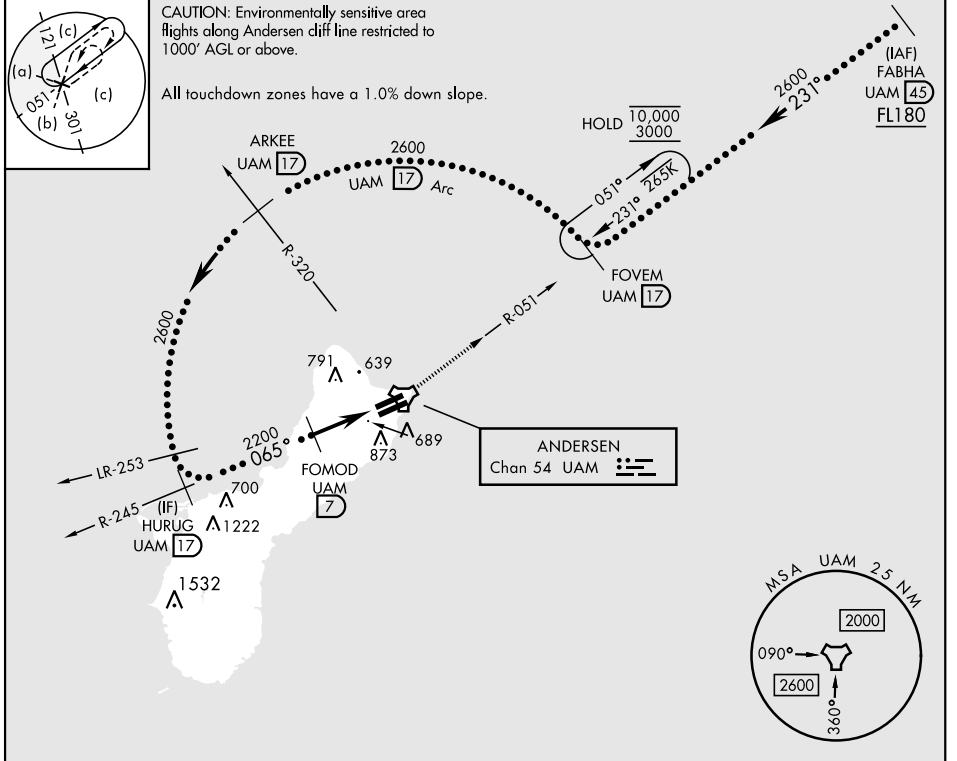
MISSED APPROACH: Climb to 3000, intercept UAM R-051 to FOVEM and hold.

ATIS <b>118.175 254.325</b>	GUAM APP CON <b>119.8 269.0</b>	TOWER <b>126.2 233.7</b>	GND CON <b>121.7 275.8</b>
--------------------------------	------------------------------------	-----------------------------	-------------------------------



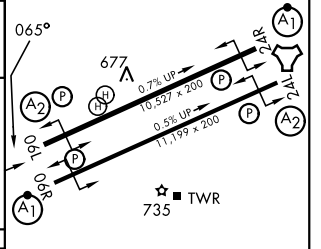
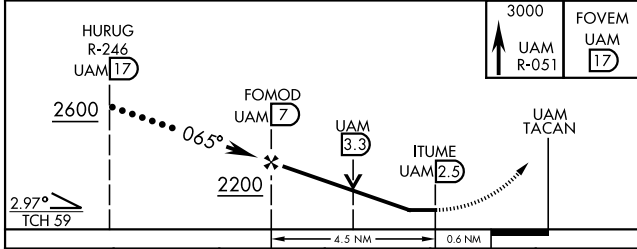
CAUTION: Environmentally sensitive area flights along Andersen cliff line restricted to 1000' AGL or above.

All touchdown zones have a 1.0% down slope.



EMERG SAFE ALT 100 NM 2900

ELEV	617	TDZE	539
------	-----	------	-----



CATEGORY	A	B	C	D	E
S-06L*	1040/40	501 (500-¾)	1040/1¼	501 (500-1½)	
CIRCLING**	1060-1	1080-1	1240-1¾	1240-2	1240-2¼
	443 (500-1)	463 (500-1)	623 (700-1¾)	623 (700-2)	623 (700-2¼)

HIRL all rwys

# HI-TACAN X RWY 06L

PAC, 19 MAR 2026 to 14 MAY 2026

PAC, 19 MAR 2026 to 14 MAY 2026