

YIGO, GUAM I, GUAM

# ILS Z or LOC/DME Z RWY 06L

LOC I-AND <b>109.3</b>	APCH CRS <b>064°</b>	Rwy Ldg <b>10,527</b> TDZE <b>539</b> Arprt Elev <b>617</b>
---------------------------	-------------------------	--

[USAF]

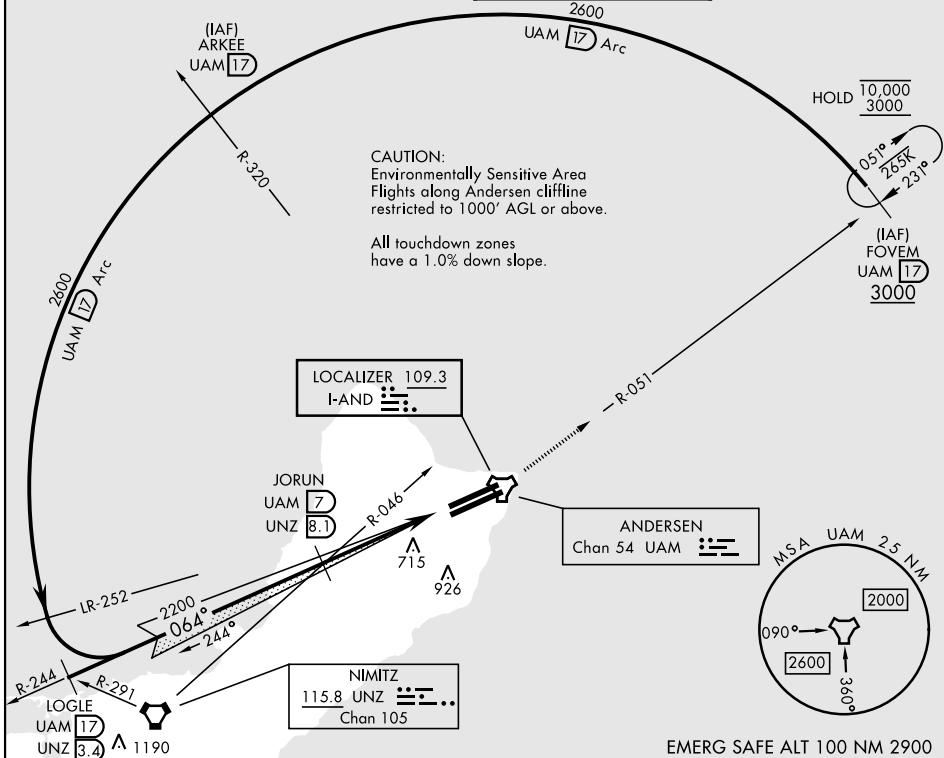
ANDERSEN AFB (PGUA)

▼ \*When ALS inop, increase CAT AB RVR to 55, vis to 1 mile; CAT CDE vis to 1 3/4 miles.  
\*\*Circling not authorized NW of Rwy 06L-24R.

SALS  
**(A2)**

MISSED APPROACH: Climb to 3000, intercept UAM R-051 to FOVEM and hold.

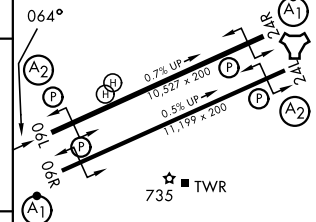
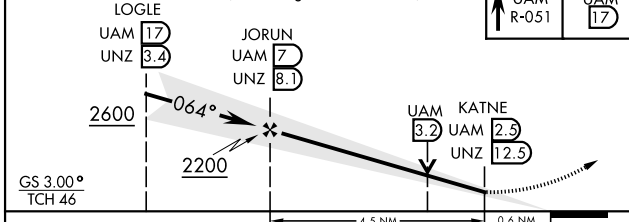
ATIS <b>118.175 254.325</b>	GUAM APP CON <b>119.8 269.0</b>	TOWER <b>126.2 233.7</b>	GND CON <b>121.7 275.8</b>
--------------------------------	------------------------------------	-----------------------------	-------------------------------



PAC, 19 MAR 2026 to 14 MAY 2026

PAC, 19 MAR 2026 to 14 MAY 2026

EMERG SAFE ALT 100 NM 2900	VGSI and ILS Glidepath not Coincident (VGSI Angle 3.00/TCH 59).	3000 UAM R-051	FOVEM UAM 17	ELEV 617	TDZE 539
----------------------------	---	----------------	--------------	----------	----------



CATEGORY	A	B	C	D	E
S-ILS 06L	739/40		200	(200-3/4)	
S-LOC 06L*	1020/40 481 (500-3/4)		1020/60	481	(500-1 1/2)
CIRCLING**	1060-1 443 (500-1)	1080-1 463 (500-1)	1240-1 3/4 623 (700-1 3/4)	1240-2 623 (700-2)	1240-2 1/4 623 (700-2 1/4)
HIRL all rwy's					
FAF to MAP 4.5 NM					
Knots	60	90	120	150	180
Min:Sec	4:30	3:00	2:15	1:48	1:30

YIGO, GUAM I, GUAM

13° 35' N-144° 56' E

ANDERSEN AFB (PGUA)

Amdt 1 08SEP22  
TERPS

# ILS Z or LOC/DME Z RWY 06L