

ILS Z or LOC/DME Z RWY 06R

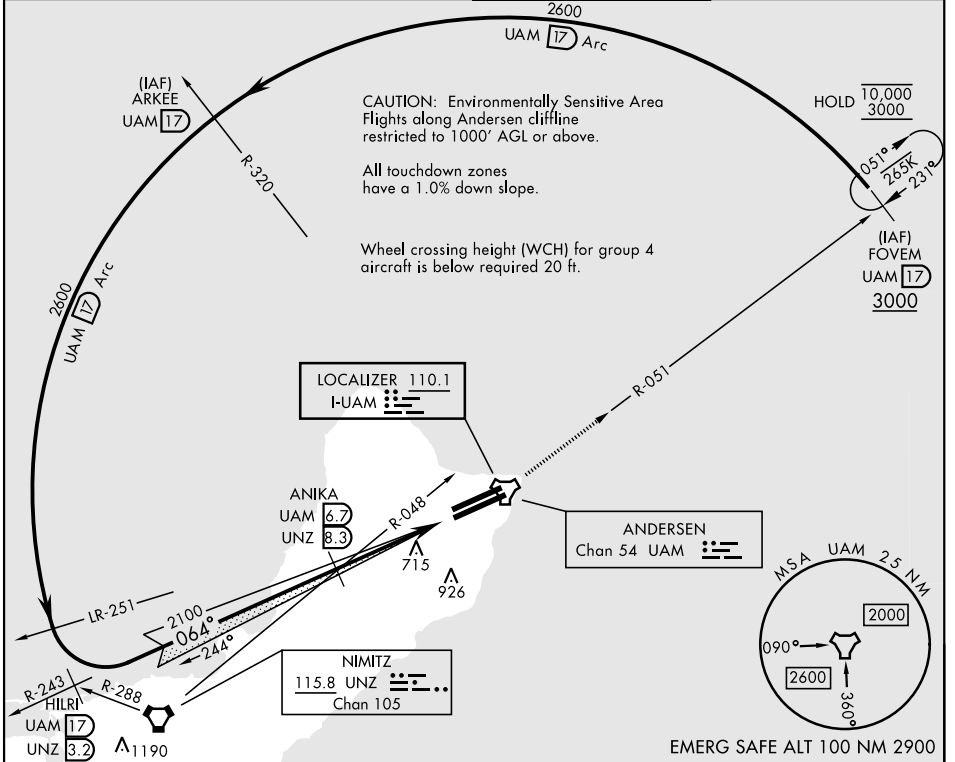
LOC I-UAM 110.1	APCH CRS 064°	Rwy Idg 11,199 TDZE 557 Arprt Elev 617
---------------------------	-------------------------	---

[USAF]

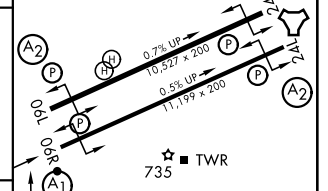
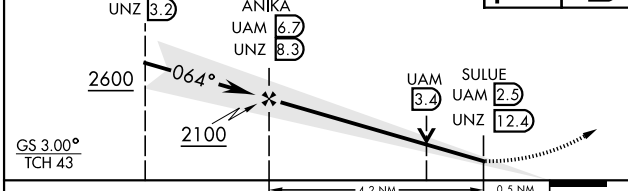
ANDERSEN AFB (PGUA)

<p>▼ *When ALS inop, increase RVR to 40, vis to ¾ mile. **When ALS inop, increase CAT AB RVR to 55, vis to 1 mile, CAT CDE vis to 1½ miles. *** Circling not authorized NW of Rwy 06L-24R.</p>	<p>ALSF-1 </p>	<p>MISSED APPROACH: Climb to 3000, intercept UAM R-051 to FOVEM and hold.</p>
--	--------------------	---

ATIS 118.175 254.325	GUAM APP CON 119.8 269.0	TOWER 126.2 233.7	GND CON 121.7 275.8
--------------------------------	------------------------------------	-----------------------------	-------------------------------



3000	FOVEM UAM 17	ELEV 617	TDZE 557
------	-----------------	----------	----------



CATEGORY	A	B	C	D	E
S-ILS 06R*	757/24		200	(200-½)	
S-LOC 06R**	1040/24 483 (500-½)		1040/50 483 (500-1)		
CIRCLING***	1060-1 443 (500-1)	1080-1 463 (500-1)	1240-1¾ 623 (700-1¾)	1240-2 623 (700-2)	1240-2¼ 623 (700-2¼)

FAF to MAP 4.2 NM					
Knots	60	90	120	150	180
Min:Sec	4:12	2:48	2:06	1:41	1:24

ILS Z or LOC/DME Z RWY 06R

PAC, 19 MAR 2026 to 14 MAY 2026

PAC, 19 MAR 2026 to 14 MAY 2026