

YIGO, GUAM I, GUAM

ILS Z or LOC Z RWY 24L

LOC I-PMY 110.1	APCH CRS 244°	Rwy Idg 11,199 TDZE 607 Arpt Elev 617
---------------------------	-------------------------	--

[USAF]

ANDERSEN AFB (PGUA)

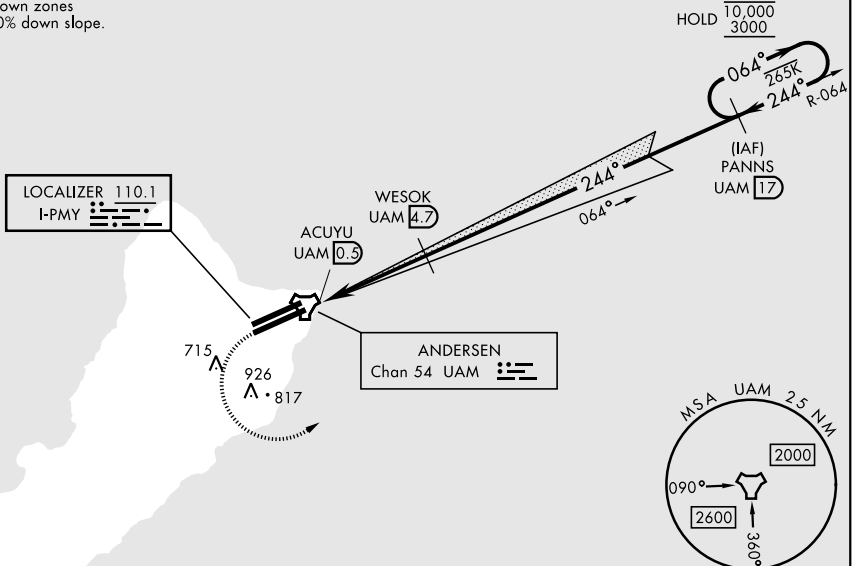
<p>▼ *When ALS inop, increase RVR to 45, vis to 7/8 mile. **When ALS inop, increase CAT AB RVR to 55, vis to 1 mile; CAT CDE RVR to 50, vis to 1 mile. *** Circling not authorized NW of Rwy 06L-24R.</p>	SALS (A2)	MISSED APPROACH: Climb to 1200, then climbing left turn to 3000 to intercept UAM R-064 direct PANNS and hold.
---	---------------------	---

ATIS 118.175 254.325	GUAM APP CON 119.8 269.0	TOWER 126.2 233.7	GND CON 121.7 275.8
--------------------------------	------------------------------------	-----------------------------	-------------------------------

CAUTION: GS unusable below 900' MSL/300' AGL due to runway supervisory unit.

CAUTION: Environmentally Sensitive Area Flights along Andersen cliffline restricted to 1000' AGL or above.

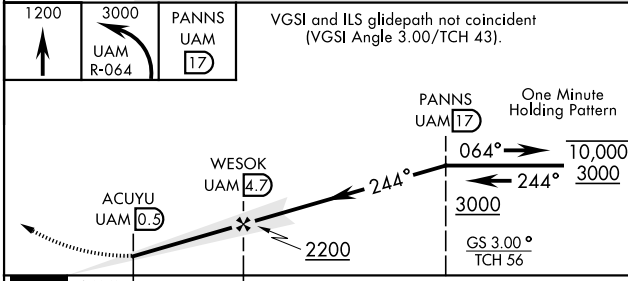
All touchdown zones have a 1.0% down slope.



PAC, 19 MAR 2026 to 14 MAY 2026

PAC, 19 MAR 2026 to 14 MAY 2026

EMERG SAFE ALT 100 NM 2900



ELEV	617	TDZE	607
HIRL all rwys			
FAF to MAP 4.2 NM			
Knots	60	90	120 150 180
Min:Sec	4:12	2:48	2:06 1:41 1:24

CATEGORY	A	B	C	D	E
S-ILS 24L*	900/40		293	(300-3/4)	
S-LOC 24L**	940/40		333	(400-3/4)	
CIRCLING***	1060-1 443 (500-1)	1080-1 463 (500-1)	1240-1 3/4 623 (700-1 3/4)	1240-2 623 (700-2)	1240-2 1/4 623 (700-2 1/4)

YIGO, GUAM I, GUAM

13° 35' N-144° 56' E

ANDERSEN AFB (PGUA)

Orig 19FB26
TERPS

ILS Z or LOC Z RWY 24L