

YIGO, GUAM I, GUAM

ILS Z or LOC Z RWY 24R

LOC I-YIG 109.3	APCH CRS 244°	Rwy Idg 10,527 TDZE 617 Arpt Elev 617
---------------------------	-------------------------	---

[USAF]

ANDERSEN AFB (PGUA)

▼ * When ALS inop, increase RVR to 40, vis to ¼ mile.
 ** When ALS inop, increase RVR to 55, vis to 1 mile.
 *** Circling not authorized NW of Rwy 06L-24R.



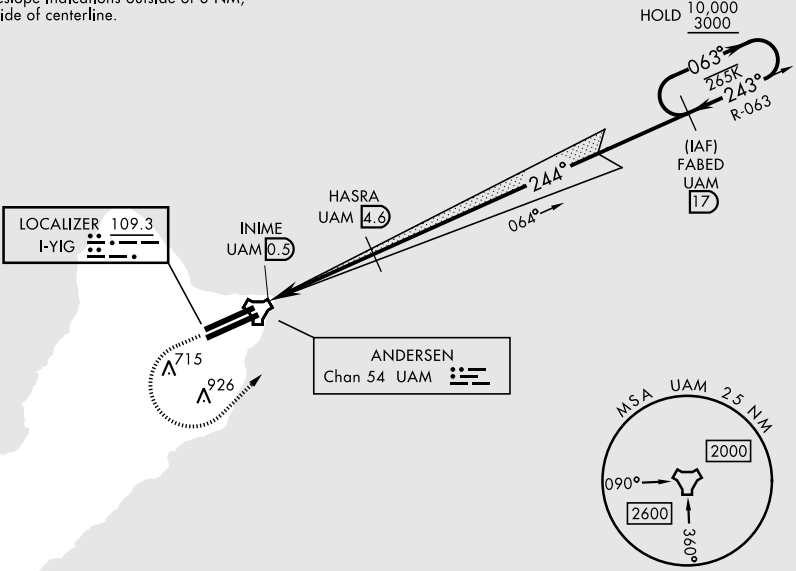
MISSED APPROACH: Climb to 1100, then climbing left turn to 3000 to intercept UAM R-063 direct FABED and hold.

ATIS 118.175 254.325	GUAM APP CON 119.8 269.0	TOWER 126.2 233.7	GND CON 121.7 275.8
--------------------------------	------------------------------------	-----------------------------	-------------------------------

CAUTION: Environmentally Sensitive Area
 Flights along Andersen cliffline
 restricted to 1000' AGL or above.

All touchdown zones
 have a 1.0% down slope.

Disregard all glideslope indications outside of 8 NM,
 beyond 5° either side of centerline.

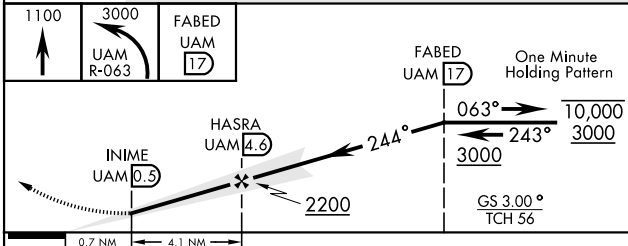


PAC, 19 MAR 2026 to 14 MAY 2026

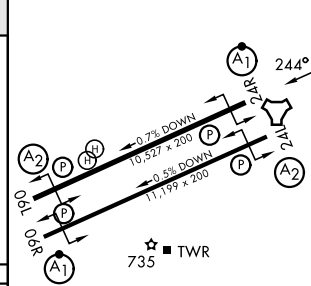
PAC, 19 MAR 2026 to 14 MAY 2026

A
1190

EMERG SAFE ALT 100 NM 2900



ELEV 617	TDZE 617
----------	----------



CATEGORY	A	B	C	D	E
S-ILS 24R*	817/24 200 (200-½)				
S-LOC 24R**	940/24 323 (400-½)	940/26 323 (400-½)			
CIRCLING***	1060-1	1080-1	1240-1¾	1240-2	1240-2¼
	443 (500-1)	463 (500-1)	623 (700-1¾)	623 (700-2)	623 (700-2¼)

HIRL all rwys					
FAF to MAP 4.1 NM					
Knots	60	90	120	150	180
Min:Sec	4:06	2:44	2:03	1:38	1:22

YIGO, GUAM I, GUAM

13° 35' N-144° 56' E

ANDERSEN AFB (PGUA)

Orig 19FEB26
 TERPS

ILS Z or LOC Z RWY 24R