

YIGO, GUAM I, GUAM

RNAV (GPS) RWY 24L

APCH CRS 244°	Rwy Idg 11,199
	TDZE 607
	Arprt Elev 617

(USAF)

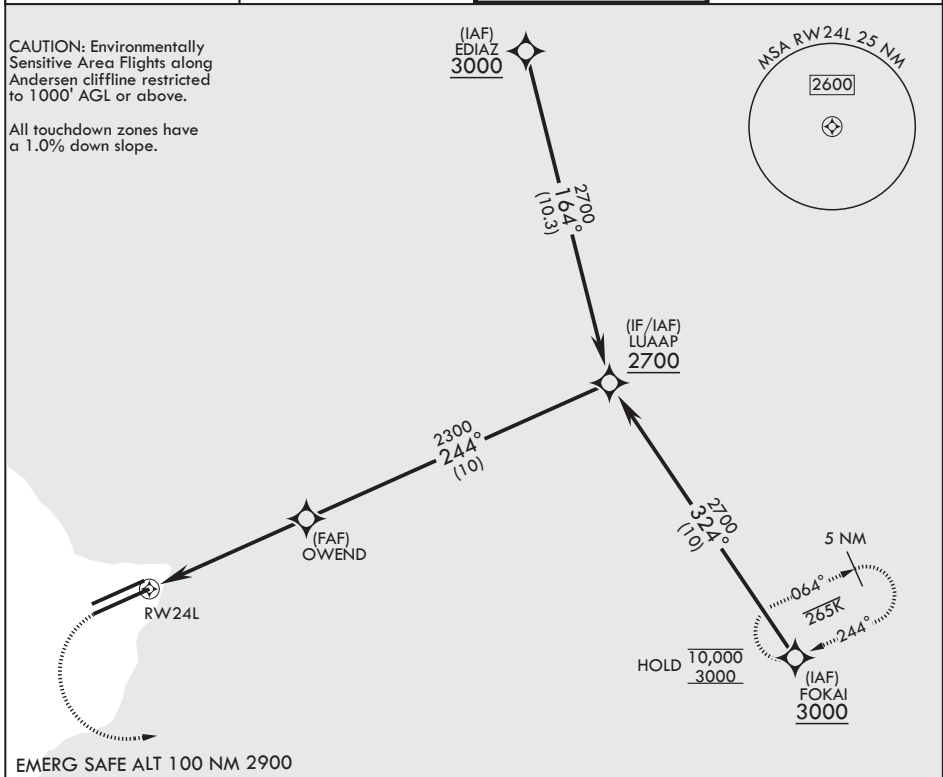
ANDERSEN AFB (PGUA)

RNP APCH. DME/DME RNP - 0.3 NA	SALS	MISSED APPROACH: Climb to 1200, then climbing left turn to 3000 direct FOKAI and hold.
<p>▼ * When ALS inop, increase CAT AB RVR to 55, vis to 1 mile; CAT CDE RVR to 50, vis to 1 mile. ** Circling not authorized NW of Rwy 06L-24R.</p>		

ATIS 118.175 254.325	GUAM APP CON/DEP CON 119.8 269.0	TOWER 126.2 233.7	GND CON 121.7 275.8
--------------------------------	--------------------------------------------	-----------------------------	-------------------------------

CAUTION: Environmentally Sensitive Area Flights along Andersen cliffline restricted to 1000' AGL or above.

All touchdown zones have a 1.0% down slope.



EMERG SAFE ALT 100 NM 2900

	LUAAP 2700		ELEV 617	TDZE 607	
	OWEND 2300	244°			
<p>0.9 NM to RWY 24L</p> <p>5.2 NM</p> <p>≤ 3.00° TCH 43</p>					
CATEGORY	A	B	C	D	E
LNAV MDA*	940/40 333 (400-¾)		940/45 333 (400-¾)		
CIRCLING**	1060-1 443 (500-1)	1080-1 463 (500-1)	1240-1¼ 623 (700-1¼)	1240-2 623 (700-2)	1240-2¼ 623 (700-2¼)
HIRL all rwys					

YIGO, GUAM I, GUAM

13°35'N - 144°56'E

ANDERSEN AFB (PGUA)

Amdt 1 17JUN21
TERPS

RNAV (GPS) RWY 24L

PAC, 19 MAR 2026 to 14 MAY 2026

PAC, 19 MAR 2026 to 14 MAY 2026