

YIGO, GUAM I, GUAM

RNAV (GPS) RWY 06L

APCH CRS	Rwy Idg	10,527
064°	TDZE	539
	Arprt Elev	617

(USAF)

ANDERSEN AFB (PGUA)

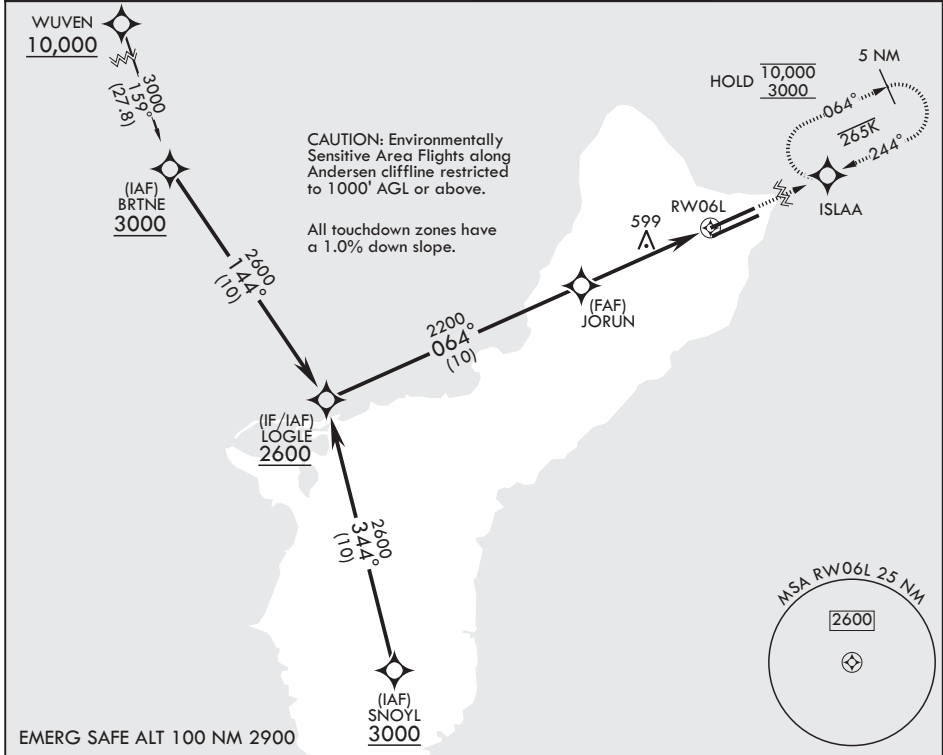
RNP APCH. DME/DME RNP - 0.3 NA



MISSED APPROACH: Climb to 3000 direct ISLAA and hold.

▼ * When ALS inop increase CAT AB RVR to 55, vis to 1 mile; CAT CDE vis to 1 3/8 miles.
 ** Circling not authorized NW of Rwy 06L-24R.
 Circling not authorized to Rwys 06L and 24R.

ATIS 118.175 254.325	GUAM APP CON/DEP CON 119.8 269.0	TOWER 126.2 233.7	GND CON 121.7 275.8
-------------------------	-------------------------------------	----------------------	------------------------



LOGLE 2600

3.00° ≥ TCH 46

JORUN 2200

1.4 NM to RWY 06L

5.1 NM

ISLAA ELEV 617 TDZE 539

BCN TWR 735

CATEGORY	A	B	C	D	E
LNAV MDA*	1040/40 501 (500-¾)	1040-1¼ 501 (500-1¼)	1040-1¼ 501 (500-1¼)	1040-2 623 (700-2)	1240-2¼ 623 (700-2¼)
CIRCLING**	1060-1 443 (500-1)	1080-1 463 (500-1)	1240-1¾ 623 (700-1¾)	1240-2 623 (700-2)	1240-2¼ 623 (700-2¼)

HIRL all rwys

PAC, 19 MAR 2026 to 14 MAY 2026

PAC, 19 MAR 2026 to 14 MAY 2026

YIGO, GUAM I, GUAM

13°35'N - 144°56'E

ANDERSEN AFB (PGUA)

Amdt 1 17JUN21
TERPS

RNAV (GPS) RWY 06L