

YIGO, GUAM I, GUAM

RNAV (GPS) RWY 06R

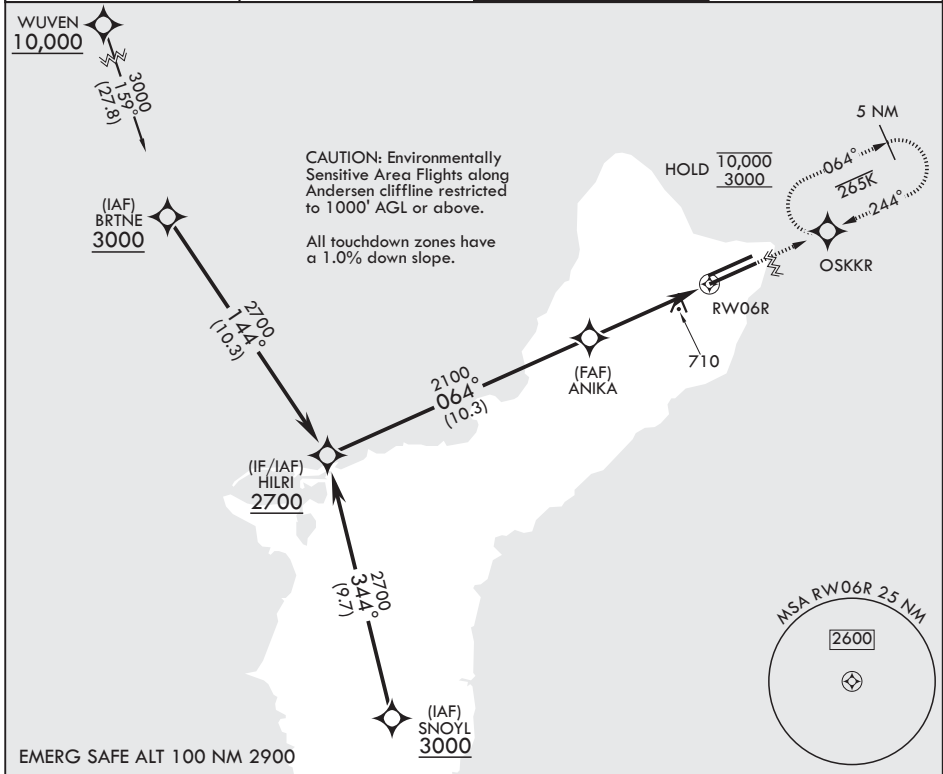
APCH CRS	Rwy Idg	11,199
064°	TDZE	557
	Arprt Elev	617

(USAF)

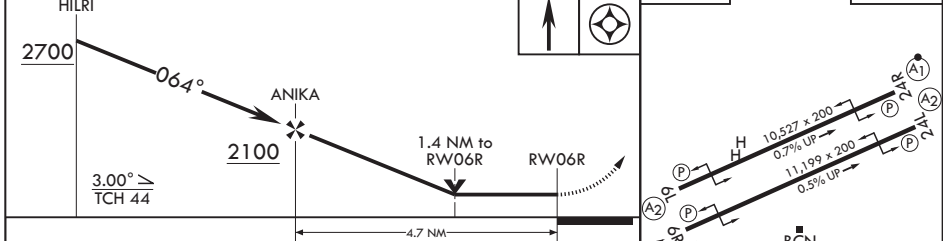
ANDERSEN AFB (PGUA)

RNP APCH. DME/DME RNP - 0.3 NA	ALSIF-1	MISSED APPROACH: Climb to 3000 direct OSKKR and hold.
<p>▼ * When ALS inop, increase CAT AB RVR to 55, vis to 1 mile; CAT CDE vis to 1 3/8 miles.</p> <p>** Circling not authorized NW of Rwy 6L-24R.</p>		

ATIS 118.175 254.325	GUAM APP CON/DEP CON 119.8 269.0	TOWER 126.2 233.7	GND CON 121.7 275.8
--------------------------------	--	-----------------------------	-------------------------------



EMERG SAFE ALT 100 NM 2900



CATEGORY	A	B	C	D	E
LNAY MDA*	1040/24 483 (500-½)		1040/50 483		(500-1)
CIRCLING**	1060-1 443 (500-1)	1080-1 463 (500-1)	1240-1¼ 623 (700-1¼)	1240-2 623 (700-2)	1240-2¼ 623 (700-2¼)

YIGO, GUAM I, GUAM 13°35'N - 144°56'E ANDERSEN AFB (PGUA)

Amdt 1 17JUN21 **RNAV (GPS) RWY 06R**

TERPS

PAC, 19 MAR 2026 to 14 MAY 2026

PAC, 19 MAR 2026 to 14 MAY 2026