

YIGO, GUAM I, GUAM

TACAN Y RWY 24L

VORTAC UNZ 115.8 Chan T05	APCH CRS 236°	Rwy ldg TDZE 11,199 607 Arprt Elev 617
---	-------------------------	---

(USAF)

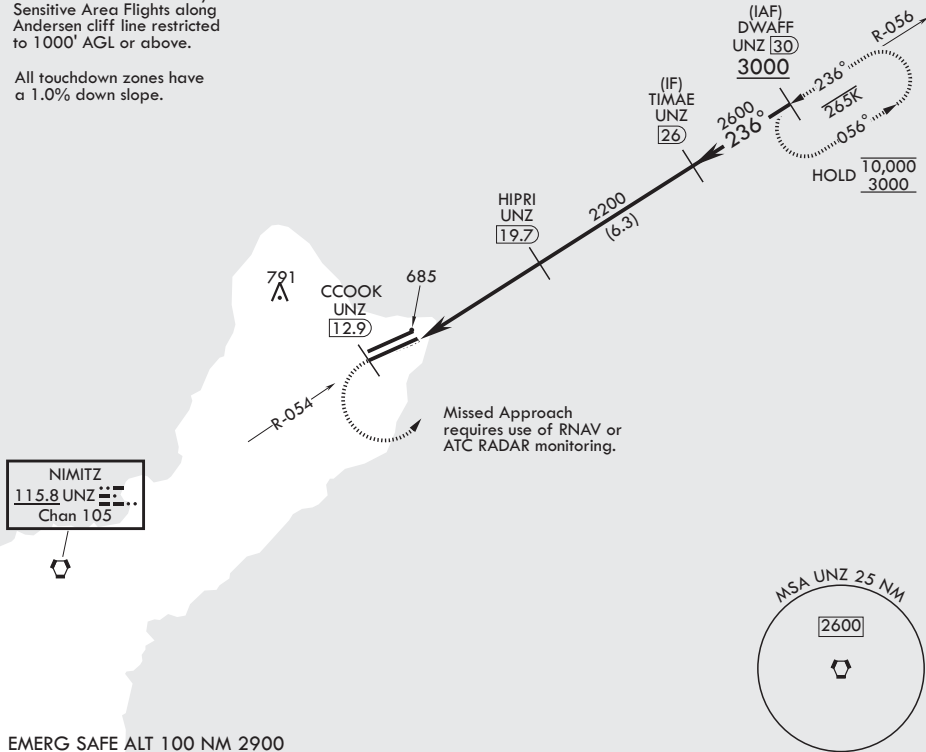
ANDERSEN AFB (PGUA)

<p>⚠ * When ALS inop increase CAT AB RVR to 55, vis to 1 mile; CAT CDE RVR to 50, vis to 1 mile. ** Circling not authorized NW of Rwy 06L-24R.</p>	<p>SALS (A2)</p>	<p>MISSED APPROACH: Climb to 3000 direct CCOOK, then climbing left turn to intercept UNZ R-056 and hold.</p>
---	-----------------------------	--

<p>ATIS 118.175 254.325</p>	<p>GUAM APP CON/DEP CON 119.8 269.0</p>	<p>TOWER 126.2 233.7</p>	<p>GND CON 121.7 275.8</p>
--	--	-------------------------------------	---------------------------------------

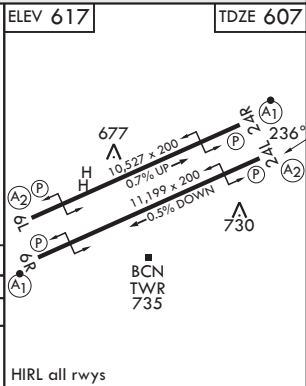
CAUTION: Environmentally Sensitive Area Flights along Andersen cliff line restricted to 1000' AGL or above.

All touchdown zones have a 1.0% down slope.



EMERG SAFE ALT 100 NM 2900

3000	CCOOK UNZ (12.9)	UNZ R-056	DWAFF UNZ (30)	ELEV 617	TDZE 607
VORTAC	WEVUS (14.8)	(15.6)	HIPRI (19.7)	TIMAE (26)	236°
			2200	2600	3000
	.1	4.9 NM			
CATEGORY	A	B	C	D	E
S-24L*	940/40	333 (400-¾)	940/45	333 (400-¾)	
CIRCLING**	1060-1 443 (500-1)	1080-1 463 (500-1)	1240-1¼ 623 (700-1¼)	1240-2 623 (700-2)	1240-2¼ 623 (700-2¼)
	HIRL all rwys				



YIGO, GUAM I, GUAM

13°35'N - 144°56'E

ANDERSEN AFB (PGUA)

Amdt 2 17JUN21
TERPS

TACAN Y RWY 24L

PAC, 19 MAR 2026 to 14 MAY 2026

PAC, 19 MAR 2026 to 14 MAY 2026