

YIGO, GUAM I, GUAM

# TACAN Y RWY 06R

VORTAC UNZ <b>115.8</b> Chan <b>T05</b>	APCH CRS <b>054°</b>	Rwy ldg TDZE <b>11,199</b> 557 Arprt Elev <b>617</b>
---	-------------------------	--

(USAF)

ANDERSEN AFB (PGUA)

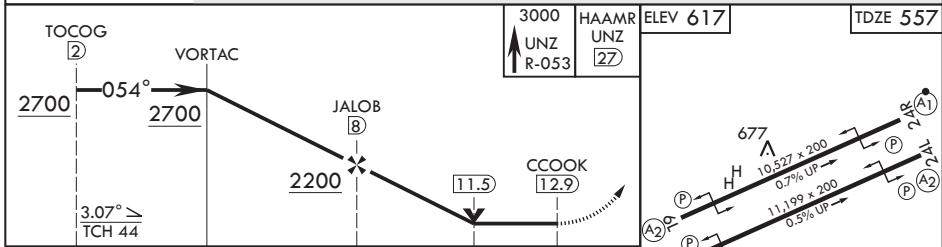
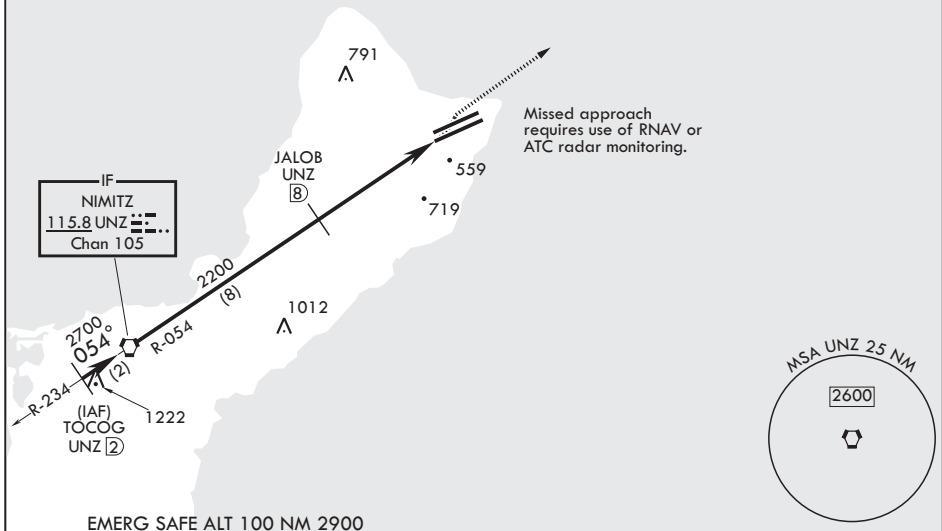
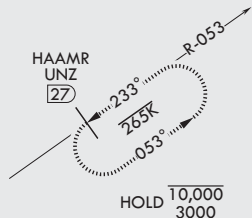
▼ \* When ALS inop, increase CAT AB RVR to 55, vis to 1 mile, CAT CDE vis to 1 3/8 miles.  
\*\* Circling not authorized NW of Rwy 6L-24R.

ALSF-1 MISSED APPROACH: Climb to 3000, intercept UNZ R-053 to HAAMR and hold.

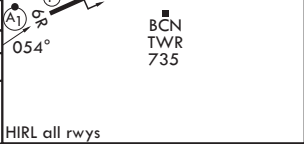
ATIS <b>118.175 254.325</b>	GUAM APP CON/DEP CON <b>119.8 269.0</b>	TOWER <b>126.2 233.7</b>	GND CON <b>121.7 275.8</b>
--------------------------------	--	-----------------------------	-------------------------------

CAUTION: Environmentally Sensitive Area Flights along Anderson cliff line restricted to 1000' AGL or above.

All touchdown zones have a 1.0% down slope.



CATEGORY	A	B	C	D	E
S-6R*	1060/24	503 (500-½)	1060/55	503	(500-1)
CIRCLING**	1060-1 443 (500-1)	1080-1 463 (500-1)	1240-1¼ 623 (700-1¼)	1240-2 623 (700-2)	1240-2¼ 623 (700-2¼)



YIGO, GUAM I, GUAM

13°35'N - 144°56'E

ANDERSEN AFB (PGUA)

Amdt 2 17JUN21  
TERPS

# TACAN Y RWY 06R

PAC, 19 MAR 2026 to 14 MAY 2026

PAC, 19 MAR 2026 to 14 MAY 2026