

YIGO, GUAM I, GUAM

TACAN Z RWY 24L

TACAN UAM Chan 54	APCH CRS 256°	Rwy Idg TDZE Arprt Elev	11,199 607 617
----------------------	------------------	-------------------------------	----------------------

(USAF)

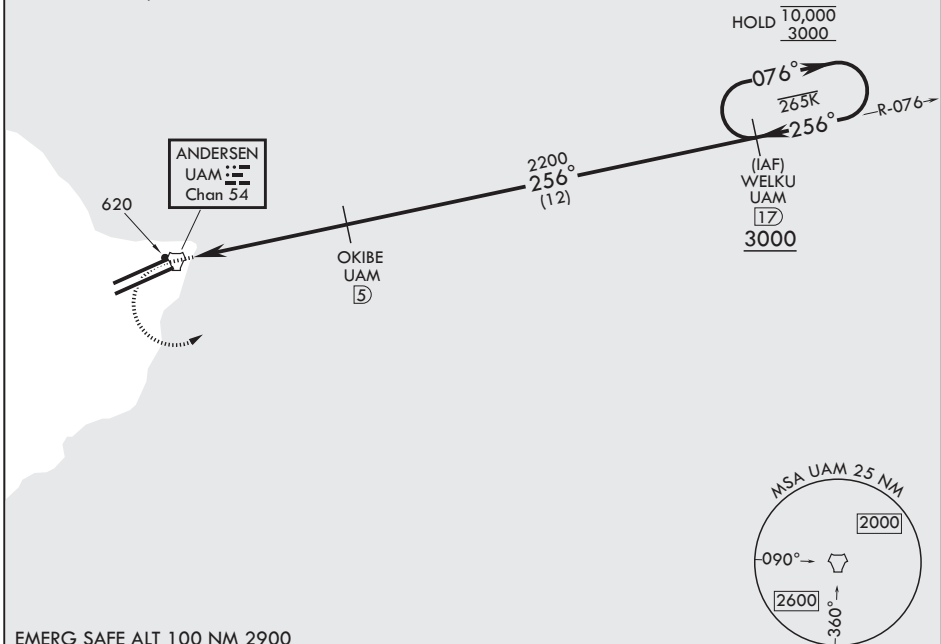
ANDERSEN AFB (PGUA)

RADAR or DME required	SALS	MISSED APPROACH: Climb to 1100, then climbing left turn to 3000 to intercept UAM R-076 and hold.
<p>▼ * When ALS inop, increase CAT AB RVR to 55, vis to 1 mile; CAT CDE RVR to 50, vis to 1 mile.</p> <p>** Circling not authorized NW of Rwy 6L-24R.</p>	(A2)	

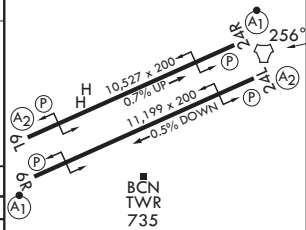
ATIS 118.175 254.325	GUAM APP CON/DEP CON 119.8 269.0	TOWER 126.2 233.7	GND CON 121.7 275.8
-------------------------	-------------------------------------	----------------------	------------------------

CAUTION: Environmentally Sensitive Area Flights along Andersen cliff line restricted to 1000' AGL or above.

All touchdown zones have a 1.0% down slope.



1100 ↑	3000	WELKU UAM (17)	WELKU (17)	076° →	10,000	ELEV 617	TDZE 607
UAM R-076				← 256°	3000		
		OKIBE (5)		← 256°	2200		
				← 256°	2200		
				≤ 2.85° TCH 43			
					0.6		
					4.5 NM		
CATEGORY	A	B	C	D	E		
S-24L*	940/40	333 (400-¾)	940/45	333	(400-¾)		
CIRCLING**	1060-1 443 (500-1)	1080-1 463 (500-1)	1240-1¼ 623 (700-1¼)	1240-2 623 (700-2)	1240-2¼ 623 (700-2¼)		



YIGO, GUAM I, GUAM

13°35'N - 144°56'E

ANDERSEN AFB (PGUA)

Amdt 2 17JUN21
TERPS

TACAN Z RWY 24L

PAC, 19 MAR 2026 to 14 MAY 2026

PAC, 19 MAR 2026 to 14 MAY 2026